



International student handbook

A solid purple vertical bar runs along the left edge of the page.

International student handbook

Introduction

Thank you for your interest in the Visual Arts or educational programmes offered by the Haute école des arts du Rhin – HEAR. This guide is designed for current and prospective international students. It offers useful information about studying at HEAR, settling in France and living in both Mulhouse and Strasbourg.

The International Office is in charge of counselling all international students. Should you have any question, please don't hesitate to contact us at ✉ international@hear.fr

We wish you a pleasant reading of this guide and are looking forward to see you soon at HEAR!

How to use this guide

You can access to all the hyperlinks and email addresses on the digital version of the International Student Handbook on the HEAR website on the international part.

Content

6 HEAR at a glance	32 Student life
6 History & key figures	32 Transport
7 Addresses, opening hours & directions	33 Shopping guide
8 In and around Alsace Region	34 Professional experience in France
	35 Student community and university services
9 Academic information	37 Going out
9 Semester dates	38 Cultural information
10 Overview of educational programmes	
10 Theoretical Visual Arts classes	39 Your studies at HEAR
11 It happens in English	39 Student life at HEAR
11 French classes for HEAR students	41 Exchange students
	43 Regulation and safety
12 Educational programmes	45 Learning French
12 Académie supérieure de musique of Strasbourg	
14 Mulhouse Visual Arts Campus	47 Events not to be missed...
15 Strasbourg Visual Arts Campus	47 ... at HEAR
19 Visual Arts projects & workshops	48 ... in Alsace
20 How to Apply	49 Maps
20 Incoming exchange student	50 Where is HEAR
21 Admission at HEAR as a regular student	51 Mulhouse
	52 Strasbourg
23 Prepare your sta	53 Mulhouse Visual Arts Campus
23 Legal entry requirements	54 Strasbourg Visual Arts Campus
24 Budget	
24 Documents to bring with you	61 Annex
25 Arrival	62 Key contacts
25 Housing	64 Language self-assessment grid
	65 Glossary
28 Settling in France	65 Useful weblinks
28 Insurances	
30 Healthcare	
30 Bank	
31 Phone	
31 Emergencies	

HEAR at a glance 6 – 8

History & key figures

History

HEAR was created in 2011 by merging three higher education institutions in Alsace:

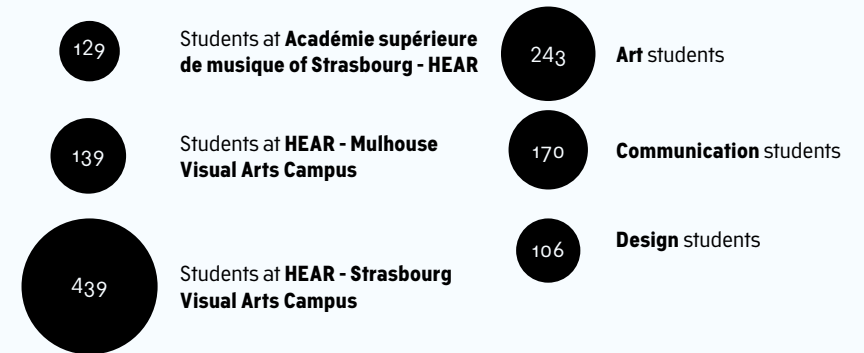
- The Académie supérieure de musique of Strasbourg stemmed from the Strasbourg Conservatory created in 1855.
- The Mulhouse Ecole supérieure d'art, founded in 1825 by the Industrial Society of Mulhouse as a drawing school focused on the textile industry, which became the Mulhouse municipal school of Fine Arts in 1945.

- The Strasbourg Ecole supérieure des arts décoratifs founded by the city of Strasbourg in 1892 as a professional school of Applied Arts, offering a vast choice of workshops (joinery/ carpentry, metalwork, ceramics, bookbinding, lithography and embroidery).

Key figures 2015

3 campuses
135 faculty members
735 students

Students from more than 30 countries
More than 100 international partner institutions
24,000 m² of buildings (Music: 9000 m²
– Visual arts: 4,500 m² in Mulhouse,
10,500 m² in Strasbourg)



Addresses, opening hours & directions

Addresses

Académie supérieure de musique of Strasbourg
1, place Dauphine
67000 Strasbourg
FRANCE

Mulhouse Visual Arts Campus
3, quai des Pêcheurs
68200 Mulhouse
FRANCE

Strasbourg Visual Arts Campus
1, rue de l'Académie
CS10032
67082 Strasbourg cedex
FRANCE

Opening hours during the academic year

Académie supérieure de musique of Strasbourg
Monday to Friday 8 am – 10 pm
Saturday 8 am – 8 pm

Mulhouse Visual Arts Campus
Monday – Thursday
8:15 am – 8:45 pm
Friday 8:15 am – 7:30 pm

Strasbourg Visual Arts Campus
Monday – Thursday
7 am – 9 pm
Friday 7 am – 7 pm

Directions*

Académie supérieure de musique of Strasbourg
From the train station
Gare Centrale take tram A towards
Illkirch Lixenbul
or
tram D towards *Aristide Briand*
and exit at station *Étoile Bourse*.

Mulhouse Visual Arts Campus
From the train station *Gare Centrale* Take tram 3 towards
Lutterbach,
or
tram-train towards *Thann* exit at
Tour Nessel.

Strasbourg Visual Arts Campus
From the train station *Gare Centrale* take tram C and exit at
station *Gallia*,
or
from *Gare Centrale* take bus 10
and exit at station *Saint Guillaume*.

*See maps in the Annex of this guide.

In and around Alsace region

City of Mulhouse

Mulhouse is sometimes called the 'French Manchester' for its rich industrial past. The city is famous for its technical museums such as the Electricity museum, the Cité du train and the Cité de l'automobile. Another world known museum is the Musée de l'impression sur étoffes which holds a collection of more than 3 million textile samples. The high number of empty 19th century industrial buildings makes Mulhouse a wonderful 'playground' for young artists. Mulhouse is located

30 km away from Basel in Switzerland, another city with a rich and vibrant cultural and student life. Mulhouse is 100 km away from Strasbourg; the train ride takes about 50 minutes.

Official website of the City of Mulhouse:
www.mulhouse.fr

Tourist Information: 1, Avenue Robert Schuman
www.tourisme-mulhouse.com

City of Strasbourg

Strasbourg is a major city in Eastern France, as well as the official seat of various European institutions such as the European Parliament. The city is located very closely to the German border and is the 7th largest city in France. Strasbourg's historic city centre, the Grande Île, was classified a World Heritage site by UNESCO in 1988. Strasbourg is home to more than 50,000 students.

Official website of the City of Strasbourg:
www.en.strasbourg.eu

Tourist Information: Place de la Cathédrale
www.otstrasbourg.fr

Alsace region

Strasbourg and Mulhouse are both located in the Alsace region, famous for its high number of picturesque villages, churches and castles. Alsace is also well-known for its vineyards, its Christmas fairs, its gastronomy and the Vosges Mountains with thick and green forests and beautiful lakes. Alsace has a semi-continental climate with cold

and dry winters and hot summers. You should also explore the nearby cities by bike, train or car to discover the Alsatian countryside. You can also participate in hikes organized by the SUAPS (Strasbourg) or the UHA (Mulhouse).

Tourist Information: www.tourisme-alsace.com

Around Alsace

Alsace shares border with Germany and Switzerland. You can easily reach the following cities which present a great cultural interest within a few hours: Metz, Nancy, Karlsruhe, Stuttgart, Freiburg, Basel, and Zürich.

For information on how to travel in and around Alsace, please check the transport page 32.

Academic information

9 – 11

Semester dates

There is no class during public holiday and most of the stores are usually closed. Vacation period starts in the evening of the indicated day. School starts on the morning of the indicated day.

Académie supérieure de musique of Strasbourg

Academic year 04.09.17 – 06.07.18

Toussaint vacation: 20.10.17 – 06.11.16
Christmas vacation: 22.12.17 – 08.01.18
Public holiday: 01.11.17

Winter vacation: 23.02.18 – 12.03.18
Spring vacation: 20.04.18 – 07.05.18
Public holiday: 2.04; 1.05; 8.05; 10.05; 21.05.

Visual Arts campuses Mulhouse and Strasbourg

Fall Semester – Mulhouse Visual Arts campus

25.09.17 – 02.02.18

Fall Semester – Strasbourg Visual Arts campus

25.09.17 – 19.01.18

Christmas vacation: 22.12.17 – 08.01.18

Public holiday: 01.11.17

Spring Semester 22.01.18 – 08.06.18

Winter vacation: 16.02.18 – 03.03.18

Spring vacation: 13.04.18 – 02.05.18

Public holiday: 30.03; 2.04; 1.05; 8.05; 10.05; 21.05.

Overview of educational programmes

Académie supérieure de musique of Strasbourg

- *Bois* | Woodwind
- *Claviers* | Keyboards
- *Cordes* | Strings
- *Composition et musiques électroniques* | Composition and electronic music
- *Cuivres* | Brass
- *Direction d'ensemble* | Conducting
- *Jazz et musiques improvisées* | Jazz and improvised music
- *Musique ancienne* | Early music
- *Percussion* | Percussion
- *Voix* | Voice

Mulhouse Visual Arts Campus

Art department

- *Le Plateau* | Mixed media

Design department

Textile Design department

Strasbourg Visual Arts Campus

Art department

- *Farmteam/Storytellers* | Mixed media
- *Hors-format* | Performance, media-arts
- *La Fabrique* | Sculpture & installation
- *No Name* | Mixed media, art & science
- *Peinture(s)* | Painting
- *Phonon* | Sound art

Art-Object department

- *Bijou* | Jewellery
- *Bois* | Wood
- *Céramique* | Ceramic
- *Livre* | Book
- *Métal* | Metal
- *Verre* | Glass

Communication department

- *Communication graphique* | Graphic Communication
- *Didactique Visuelle* | Information Design
- Illustration

Scenography department

Theoretical Visual Arts classes

Theoretical classes at HEAR are taught by specialised faculty members. These classes nourish the students' entire curriculum, allowing them to situate and maintain a critical distance with their artistic productions.

These classes offer a varied approach in historical, thematic, transversal contents and in disciplines ranging from semiotics, aesthetics, history of modern and contemporary art, just like specific History based on mediums (photography, graphics, design, typography...). Most of the classes are taught in French only.

However some theory teachers are fluent in English and accept essays to be written in English.

Mulhouse Visual Arts campus

- ✉ alice.marquaille@hear.fr
- ✉ bastien.gallet@hear.fr

Strasbourg Visual Arts campus

- ✉ cyrille.bret@hear.fr

It happens in English

Classes in English can be found in every department. Some teachers follow the student's work during *Rendez-vous individuels* (individual appointments). These are not English classes but moments for students to acquire technical, practical and theoretical knowledge in their specific fields of work in English, giving their work an opening to international opportunities.

Students also get to experience different teaching methods used around the world, most of these focused on openness, co-teaching and collaborations, allowing students to gain the necessary self-knowledge and confidence

to share their work and ideas with ease and enthusiasm. In a trusting and non-judging environment, all communication happens in English, regardless of ability or level.

Mulhouse Visual Arts classes

- ✉ jan-claire.stevens@hear.fr
- ✉ mirjam.spolder@hear.fr
- ✉ zoe.inch@hear.fr

Strasbourg Visual Arts classes

- ✉ alexandra.david@hear.fr
- ✉ roger.dale@hear.fr
- ✉ ilana.isehayek@hear.fr

French classes for HEAR students

Most classes at HEAR are held in French. Improving your French skills will allow you to make the most of your study period at HEAR and your stay in France in general. Although French language classes are offered to our international students during the semester, we still strongly recommend a good preparation before your arrival.

French classes are mandatory for all international non francophone Music students, regardless of their level, and for Visual Arts students whose level is estimated at B1 and below on the CEFR scale (see page 53 – 54 in the annex).

Mulhouse Visual Arts Campus:

Tests and classes will take place in the CLAM language center.
CLAM 6, rue des Frères Lumière
www.clam.uha.fr

Strasbourg Visual Arts Campus and Académie supérieure de musique of Strasbourg

A mandatory test of French proficiency level will take place at the beginning of each semester. The class focuses on everyday life communication and is based on practical situations. This class also offers a specific support for Music and Visual Arts students with dedicated time related to arts training. From understanding French contracts, to writing a French CV, a Master thesis, a work statement, or preparing for the *bilan* (final presentation), the teacher will help you develop your language skills, and offer adequate tools related to your own field.

Teacher: ✉ soufia.souai@hear.fr

Educational Programmes

12 – 19

Académie supérieure de musique of Strasbourg

From early music to classical, contemporary or jazz, the Académie supérieure de musique of Strasbourg prepares its students for world-class careers in music performance, composition and teaching. Students learn with internationally renowned professors, performers and composers,

and participate in numerous master classes with eminent guest artists throughout the year.

 You can download the leaflet of music option: www.hear.fr/la-hear/publications-hear

Musical Dominants

The Académie supérieure de musique of Strasbourg comprises 10 music departments and offers more than 40 music majors, including

instruments that are rare even amongst French institutions, such as the accordion, ondes Martenot, and cimbalom.

Bois | Woodwind

Basson | French bassoon
Jean-Christophe Dassonville

Clarinette | Clarinet

Sébastien Kœbel
Jean-Marc Foltz

Fagott | Bassoon

Hannoo Dönneweg

Flûte traversière | Flute

Mario Caroli
Sandrine François

Hautbois | Oboe

Sébastien Giot
Christian Schmitt

Saxophone

Philippe Geiss

Claviers | Keyboards

Accordéon | Accordion

Marie-Andrée Jøerger

Ondes Martenot

Thomas Bloch
Christine Ott

Orgue | Organ

Francis Jacob
Daniel Maurer
Johan Vexo

Piano

Michel Benhaïem
Masako Hayashi Ebbesen
Jean-Baptiste Fonlupt
Michel Gaechter (Piano forte)
Amy Lin
Michèle Renoul
Dany Rouet

Cordes | Strings

Alto | Viola
Jean-Christophe Garzia
Contrebasse | Double bass
Christophe Béreau
Stephan Werner

Guitare classique

Classical guitar
Alexis Muzurakis
Susana Prieto

Harpe | Harp

Pierre-Michel Vigneau
Anne Vonau-Spannagel

Violon | Violin

Samika Honda
Hédy Kerpitchian-Garzia
Philippe Lindecker
Ana Reverdito-Haas

Violoncelle | Cello

Eva Böcker
Véronique Fuchs

Composition et musiques électroniques **Composition and electronic music**

Composition
Daniel d'Adamo

Création et interprétation électroacoustique

Creation and performance of electronic music
Tom Mays

Cuivres | Brass

Cor | French horn
Kevin Cleary
Jérôme Hanar

Euphonium

Philippe Wendling

Trombone

Nicolas Moutier

Trompette | Trumpet

Patrick Carceller
Vincent Gillig

Tuba

Micaël Cortone d'Amore

Direction d'ensemble

Conducting

Direction d'ensemble vocal

Vocal conducting
Jean-Philippe Billmann

Direction d'orchestre

Orchestral conducting
Miguel Etchegoncelay
Theodor Guschlbauer

Jazz et musiques improvisées

Jazz and improvised music

Batterie | Drum kit
Luc Isenmann

Chant | Voice

Claudia Solal

Contrebasse | Double bass

Jean-Daniel Hégé

Guitare | Guitar

Jean-Pierre Herzog

Jazz et musiques improvisées

Jazz and improvised music
Bernard Struber

Piano

Eric Watson

Saxophone

Michaël Alizon
Philippe Aubry

Musique ancienne | Early music

Chant baroque | Baroque voice

Martin Gester

Clavecin | Harpsichord

Martin Gester

Flûte à bec, traverso

Recorder and baroque flute
Patrick Blanc

Flûte à bec et hautbois baroque

Recorder and baroque oboe
Renata Duarte

Luth et guitare baroque

Lute and baroque guitar
Yasunori Imamura

Viole de gambe

Viola de gamba
Franziska Finckh

Violon baroque | Baroque Violin

Stéphanie Pfister-Reymann

Percussion | Percussion

Cymbalum | Cimbalom

Luigi Gaggero

Percussion

Stephan Fougeroux
Denis Riedinger
Emmanuel Séjourné

Voix | Voice

Chant | Singing

Jean-Noël Briend
Marie Kobayashi
Marie-Madeleine Koebelé
Françoise Kubler
Silvana Torto

Specific organisation of studies

The Académie supérieure de musique of Strasbourg offers the following diplomas and degrees: a joint Bachelor degree – Diplôme national supérieur professionnel de musicien (DNSPM)/Licence Composition et interprétation musicale (CIM), a Master de composition et interprétation musicale, and a Diplôme d'État (DE). The teaching programme emphasises on the students' daily instrumental practice which allows

them to progress with the help of nationally and internationally renowned musicians and faculty members. The curricula take into account the diversity of our students' profiles through a large selection of over 50 complementary courses. Students are encouraged to engage in other aesthetic and interdisciplinary fields in the Académie's lively artistic, economic and cultural environment.

Professional experience and career opportunities

The Académie supérieure de musique of Strasbourg prepares students for a career as a musician, artist and teacher. The Symphony Orchestra of the Académie and Conservatoire of Strasbourg, along with the Contemporary Music Ensemble and Concert Band, give students the opportunity to participate and learn in a professional environment and perform the master works of the repertoire. Under the direction of esteemed conductors,

each ensemble has two to three sessions a year that culminate in concerts in the auditorium of the Cité de la musique et de la danse. Chamber music is an essential part of the Académie degrees. Professors assist students with all facets of their chamber music, helping them to gain a profound knowledge of the repertoire as well as performance and practice techniques. Their work is showcased in public concerts at the end of each trimester.

Mulhouse Visual Arts Campus

This detailed description will help you choose your *option* (department) or/and *groupe pédagogique* (workgroup) at HEAR.

 You can download the leaflet of different Visual Arts option: www.hear.fr/la-hear/publications-hear

Art – Le Plateau

The Art department is marked by the presence of an active sound art workshop and programme, Sonic and Sound Spaces and thus displays a particular interest in the question of the propagation of art in space in its material and immaterial dimensions. The department articulates different teachings around a common project in order to encourage the particular project of each student. No technical expertise or

any particular medium is prioritized. Sound Arts, Painting, Volume, Photography, Video, Intermedia, Set Design and Exhibition Practices have a common concern: experimentation with space as an artistic concern.

Coordinator teachers:
✉ anne.immele@hear.fr
✉ didier.kiefer@hear.fr

Design

Design operates in an ambiguous field that involves technical concerns and symbolic dimensions, daily use and prospective questions. It must be able to intersect with the artistic practices and some of its theoretical, social and political, sometimes formal questions. It considers economic mechanisms, manufacturing costs

and methods. The diploma projects and the theoretical research reflect this broader spectrum of questions.

Coordinator teacher:
✉ nathalia.moutinho@hear.fr

Textile Design

Mulhouse was marked by a vital industrial activity. The relationship between Arts and Industry gave pace and structure to the city. Today, the post-industrial heritage provides the student researchers with a dense reflexive and meaningful medium. So as to imagine a creative relationship to their environment, consider the object of their

production in full difference, question skills, boost the can-dos and invent editing and collective diffusion scales, where self-production tools occupy a significant place.

Coordinator teacher:
✉ christelle.ledean@hear.fr

Strasbourg Visual Arts Campus

 You can download the leaflet of different Visual Arts option: www.hear.fr/la-hear/publications-hear

Art

Farmteam/Storytellers, Hors-Format, No Name, Peinture(s), la Fabrique and Phonon are *groupes pédagogiques* (workgroups) in the Art department of the Strasbourg Visual Arts Campus. Artists and theoreticians develop different approaches to art supported by the thoroughgoing practice of various mediums, techniques and materials. This range of possibilities enables the invention of open and personalized experimental domains in which students organize their courses according to their practice and their project. Alongside this time of experimentation and artistic research, a

common core (technical learning, workshops, platforms, transversal courses, etc.) enriches the student's project. In addition, theoretical courses incorporating a wide variety of approaches (historical, thematic, transversal) constitute an educational programme in their own right that feeds the whole of the student's curriculum. In the Master programme, the supervision of the visual research developed by the student is coordinated with that of the Master thesis in which issues and question related to personal work are developed.

• **Farmteam/Storytellers | Mixed media** •
Farmteam (Bachelor), is aimed at students who have a desire to invent stories with their visual production. Although audiovisual production is central, other media remain possible. Storytellers (Master) seeks new forms of narration. The artistic medium is the audio-visual language.

Coordinator teacher:
✉ manfred.sternjakob@hear.fr

• **Hors-format | Performance, media-arts** •
The Hors-format workgroup consists of artist-teachers, theoreticians, guest artists and students. Together they analyse and construct

artistic events in order to experiment with ways to create, transmit and analyse instability by using time, space, image, text, sound, the body and the relationship with technology as malleable media.

Coordinator teacher:

✉ anne.laforet@hear.fr

• **No Name | Mixed media, art & science** •

In No Name, teaching is designed for students aware of the complexity of contemporary societies. By linking their personal research to the theme of the seminar 'Art, Science and Society' that is developed each year, students experiment with visual forms in order to devise and produce a collective exhibition.

Coordinator teacher:

✉ christiane.geoffroy@hear.fr

• **Peinture(s) | Painting** •

In Peinture(s), an introduction to the techniques of painting, drawing and printmaking encourages the development of a personal formal language. Peinture(s) draws its project from the paradoxical space of the studio: a place of withdrawal, work and concentration that that translate the world into forms.

Coordinator teacher:

✉ mathieu.boisadan@hear.fr

• **La Fabrique | Sculpture, installation** •

At La Fabrique, sculpture may be produced in large formats. The teachers have a sculpture, moulding, drawing and photography practice and a site-specific strategy. Throughout the course, students acquire tools for the presentation, communication and dissemination of their work in order to facilitate integration into contemporary art networks.

Coordinator teacher:

✉ gerard.starck@hear.fr

• **Phonon | Sound art** •

Phonon is a transdisciplinary workgroup in sound art. Sound is considered in its essence, but is also combined with other media and other practices. Transdisciplinarity can be expressed and experienced through voice, writing, performance, noise, field-recording, composition, live music, radio (FM, streaming), installation, sound in scenography and video.

Coordinator teacher:

✉ philippe.lepeut@hear.fr

Art-Object

The Art-Object department is situated within the contemporary art field and includes the Clay/Ceramic, Glass, Jewellery, Metal, Paper/Book and Wood workshops, some of which date back to the origins of the Ecole supérieure des arts décoratifs of Strasbourg in 1892. Closely related to the field of sculpture, in its current manifestation ranging from actions to installations, the notion of object goes beyond the artist's book and jewellery. Through the use of diverse materials and high-level knowhow, students discover unexpected forms and expressions and produce new aesthetic approaches.

• **Jewellery** •

Jewellery as an artistic discipline and field of experimentation is a particularity of French art schools. Rooted in the Goldsmithing Workshop, the Jewellery Workshop at HEAR borders on contemporary art and design. It is a place for acquiring and using techniques and for generating ideas related to the intrinsic qualities of the jewel and the complex evolution of body adornment. Students develop a relevant personal vision

Although attached to the workshop they chose, students share teaching modules with the other workshops. Furthermore, the other departments, Art and Communication, collaborate with the workshops, places of fruitful multidisciplinary encounters. Throughout their studies, students benefit from various forms of teaching: technical training, theoretical courses, individual tutorials, conferences, research workshops, seminars and workshops... A group presentation, open to the public, is offered every Thursdays.

Facebook: [Lexpodujeudi](#)

through the use of various materials and know-how. Whether an object of power or a popular Art-Object, the jewel is a small zone of materiality and jewellery is a portable art, situated on the body. See the Facebook page of the Jewellery Workshop: [Facebook: HEARbijou](#)

Coordinator teachers:

✉ florence.lehmann@hear.fr

✉ sophie.hanagarth@hear.fr

• **Wood** •

The Wood Workshop involves a technical approach to information about materials and their implementation but also a more conceptual approach related to the specific nature of the material with regard to the living world and to its cultural role. Such training is designed to provide students with the necessary elements in order to give them real autonomy and ensure their future independence as authors and artists. Although the main material employed is wood in all its aspects, other materials and other means of expression are developed, without restriction, in relation to the various projects undertaken by students.

Coordinator teacher:

✉ stephane.lallemand@hear.fr

• **Clay, Ceramic** •

As an outstanding feature of French art schools, the Clay/Ceramic Workshop explores the medium of clay in terms of its uses, its history and its role in contemporary art practices. Such training facilitates approaches to the articulation of form and meaning in relation to sculpture, image and space. Clay and its derivatives are explored and manipulated in all forms (liquid, solid, unfired, fired) and at all temperatures. Using raw materials (oxides and minerals), students develop a personal formal repertoire to be employed in their projects.

Coordinator teacher:

✉ arnaud.lang@hear.fr

• **Paper, Book** •

The Book Workshop, which has arisen from a culture of book binding, is a place of research and experimentation and approaches the book as an object encoded by its historical uses and which is in a perpetual state of evolution. In its most recent

manifestation, this approach is embodied in the concept of the 'artist's book' which is rooted in diverse twentieth century experimental practices. The workshop combines theory and practice and aims to train students to understand the book-object as a medium in which form and content maintain an unstable but open relationship, especially in the era of digital mutation.

Coordinator teacher:

✉ ju-young.kim@hear.fr

• **Metal** •

The Metal Workshop explores the concept of assemblage, static and dynamic experimental structures and all formal systems induced by metals and their physical properties. The workshop is based on free experimentation with a variety of materials and guides each student in a process that encourages openness and curiosity.

Coordinator teacher:

✉ konrad.loder@hear.fr

• **Glass** •

The Glass Workshop in Strasbourg is unique in the field of French art schools. It enables the development of work through technical and theoretical approaches to understanding the origins and role of glass in the field of contemporary art, with critical distance. Students analyse and progress further in their work by using glass, as if it were any other medium, in a unique functional or poetic plastic production. Direct experimentation is the driving force behind each student's personal project. Weekly group discussions are a forum for monitoring projects and production. See the website of the Glass Workshop: atelierverre.wordpress.com

Coordinator teacher:

✉ yeun-kyung.kim@hear.fr

Communication

The Communication department consists of three specialisations: Graphic Communication, Information Design and Illustration.

Each specialisation develops its specific trainings in full autonomy, but they all share the same goals:

- Attentively read the world of visual signs around us and its underlying rhetorical processes
- Understand what gives power to images and texts, and how they interact;
- Develop the works of authors engaged in artistic

and graphic practices that are fully anchored in reality;

- Graphically answer contemporary political and socio-logical questions.

Visual Communication takes into account an order as much as its recipient. This is the methodology towards which the students are lead, step by step. Visual Communication questions the Media in its full range from paper to 'digital', from book to

audiovisual. These teachings enhance the ethical and aesthetic stakes of these tools, their impact on the subject as much as the know-how that they require.

• Information Design •

HEAR's Information Design department is unique in France. This specialisation focuses on methodologies to improve the understanding, communication and transmission of specific knowledge including art mediation using Visual and Digital Arts. Drawing, in its various styles and usages, is as central to these courses as technological development (production, distribution, publishing). Contributing theoretical approaches include cognitive and learning sciences. Information Design at HEAR is therefore a cross disciplinary practice that favours, depending on the context, intersecting approaches of the different media, languages of art mediation and forms of expression... Students can develop their talents as authors, creators sharing and participating to a critical and sensitive reading of the world, communicating a point of view, a testimony, an analysis, a staging of reality, through visual means. Didactique Visuelle runs a website where research projects and conferences are updated: www.didactiquevisuelle.hear.fr

Coordinator teacher:

✉ olivier.poncer@hear.fr

• Graphic Communication •

The Graphic Communication specialisation aims at training unique and responsible personalities in the field of Graphic Design. It leads to various professions and encourages the practice of photography, video and multimedia. If Graphic Design is seen as part of the Applied Arts, its experimental and creative aspect is also encouraged. This specialisation functions as a

laboratory, wide-open on contemporary society and aware of its social, cultural, political and artistic issues. It is open to the school's other specialisations, as well as to cross-disciplinary practices and helps students develop their research process, their ability to analyze raised issues and their contexts, while maintaining a critical and committed attitude. The question of the sign's place, its status, the nature of the media (printed, digital or hybrid) and its pervasiveness occupy a singular place in this workgroup.

See the blog of the Graphic Communication specialisation: comgraph.hear.fr

Coordinator teacher:

✉ jerome.saint-loubert-bie@hear.fr

• Illustration •

The Illustration specialisation teaches the narrative image language and its relation to the text (from the implied narration of a silent image to the complementary features of image and text on a page layout). This language is complex to learn and produces paradoxically simple and accessible reading for a great majority of people. An important aspect of the training is considering the reader, which requires a certain type of humility and the riddance of all forms of self-satisfaction from the author. The specificity of the Illustration specialisation is the independent and singular copyright work, which is asked of the students (even though being an author is not something that one learns). Developing, nourishing a world and allowing it to flourish, to exist, is the perpetual challenge that the teaching staff of the Illustration specialisation offers to take up. Graphic experiments, research of graphic style, staging, script, plot, character, color are some of the key elements of the pedagogy.

Coordinator teacher:

✉ salome.risler@hear.fr

Scenography

The scenography department questions the way the issues of space and (re) presentation cross over into various fields of contemporary creation. Although the theatre remains the structural axis of the classes, students often quit conventional performance spaces in order to question and practice what, in virtual urban spaces but also in contemporary art and the museum, is an active field of theatricality.

As it is based in an art school, the teaching of scenography at HEAR is transdisciplinary, in regular interaction with other artistic and musical practices. The workshop develops authorial viewpoints that are unusual or atypical.

The graduation diploma is thus a rare opportunity to initiate projects outside the existing codes of (re) presentation and to freely experiment with issues related to space and fiction.

Coordinator teacher:

✉ francois.duconseille@hear.fr

Visual Arts workshops

Technical workshops are accessible beyond regular class time. During the whole process an assistant will help you through the realisation of your project.

Mulhouse Visual Arts Campus technical workshops

- *Sérigraphie* | Silk screen printing
- *Photographie* | Photography
- *Infographie* | Computer graphics
- *Sonic (son)* | Sound
- Video
- *Volume* | Sculpture

- *Menuiserie* | Carpentry
- Metal
- *Gravure et découpe laser* | Laser cutting and engraving

Coordinator: Brice Jeannin

Strasbourg Visual Arts Campus workshops

Technical Workshops

- Animation
- *Atelier léger* | Wood
- *Façonnage* | Digital lab*
- *Gravure & Lithographie* Engraving & Lithography
- *Impression* | Printing workshop*
- *Livre* | Book binding*
- *Numérique* | Digital lab*
- *Photographie* | Photography*
- *Préresse & Sérigraphie** Prepress & silkscreen printing*
- Video

*Cursus PIF

Among the technical workshops in Strasbourg Visual Arts Campus, 6 of them form the Cursus PIF initiation programme.

The PIF (Préresse Impression Façonnage) initiation aims at showing students the whole process of a graphic chain. The initiation is a prerequisite in order to access each of the 6 technical workshops but places are limited. Students will need to have an edition project in mind before registering. Find more information in

the Cursus PIF brochure.

Coordinator teacher:

✉ bernard.bleny@hear.fr

Art-Objet Workshops

If you study within the Art-Objet department, teachers may schedule specific initiations which will allow you to access the facilities of another specialisation. If you're not an Art-Objet student, please check with the coordinators of each specialisation for the possibility to follow an initiation.

- *Bijou* | Jewellery
- *Bois* | Wood
- *Céramique* | Clay/ceramic
- *Livre* | Book
- *Métal* | Metal
- *Verre* | Glass

How to apply 20 – 22

Incoming exchange student

As an exchange student, you pay tuition fees to your home institution, thus you do not have to pay any tuition fees at HEAR. You benefit from the same rights and are subjected to the same duties as HEAR regular students; however you are not entitled to receive the diplomas delivered from HEAR.

Académie supérieure de musique of Strasbourg

Music exchange student can only apply for the whole academic year. Please send the following documents:

1. Application forms,
2. CD of your performance record,
3. CV,
4. Letter of motivation,
5. ID picture,
6. Learning agreement
7. Proof of french level (B1)

Applications should be sent by email to:

✉ thibaut.gindensperger@hear.fr
and regular mail to:

Académie supérieure de musique de Strasbourg

À l'attention de Thibaut Gindensperger
Cité de la musique et de la danse
1 place Dauphine
67000 Strasbourg
FRANCE

The Académie will acknowledge good reception of the application, and will provide answer by the end of May.

Language requirements

French language skills are necessary and mandatory. All exchange students are required to attend a French class.

Application deadline

Full academic year only: April 15

Visual Arts

Please send your application by e-mail to ✉ international@hear.fr including the 2 following PDF files:

- Lastname_Firstname_Application documents
- Lastname_Firstname_Portfolio

Application documents

All in one PDF file in this order:

1. Application form,
2. CV,
3. Letter of motivation,
4. ID picture

Portfolio

Format: Max A4 (210 × 297 mm)

Definition: 110 dpi/pop

Maximum size: 5 mega octets/mega bytes

The coordinator of the department, specialisation or workgroup will review applications, and you will be accepted depending on portfolio quality and study places available in each department, specialisation or workgroup. You can expect an answer concerning your application within the month after the deadline.

Language requirements

Most of our classes are held in French. We offer French classes to our international students during the semester but we still strongly recommend a good preparation before classes start. See section about French classes for HEAR students page 45–46.

Applications deadlines

Fall Semester: May 15

Spring Semester: November 1

Admission at HEAR as a graduate student

Académie supérieure de musique of Strasbourg


For admissions to the Bachelor/DNSPM (performance) programme or Bachelor DNSPC (composition) programme, the candidate must have a DEM (a musical education diploma – equivalent of 'A' levels or AP's) or an equivalent foreign degree.

Admissions to the Master programmes are open to candidates with a Bachelor – DNSPM/DNSPC or equivalent foreign degree.

Conditions, procedures and application forms available online www.hear.fr

Required French level: DELF B1 for Bachelor and DELF B2 for Master

Tuition fees

You can find the conditions to reduced tuition fees in the *Guide de l'étudiant*.  **Download the guide in PDF:** www.hear.fr/arts-plastiques/pedagogie-arts-plastiques
For more information please contact Thibaut Gindensperger.

DNSPM-Bachelor:
regular fee €424

Master CIM:
regular fee €378

Application deadlines

Application deadline: beginning of January

Auditions date: in March

Visual Arts

1st Year entry exam

For admissions to the 1st year entry exam you need the Baccalauréat (or equivalent diploma). French language skills are mandatory and you need to provide a proof of a B1 level in French.

The exam is structured in two phases:

- selection of the written application (portfolio, letter of intent and application form)
- interview with a jury and written examination (in French) on a theoretical subject.

Application fee €60.

Admission committee

This committee is open to students having completed at least one year of higher artistic education. French language skills are mandatory and you need a proof of a B2 level in French. The admission is determined by the decision of the jury and the study places available in each specialisation or workgroup.

The admission consists of two steps:

- pre-selection of the written application
- interview with a jury from the chosen specialisation or workgroup. In some cases this interview can take place via Skype.

The updated application procedure will be available on the school's website www.hear.fr in 2018.

Application fee €61

Application deadlines

1st year students: Mid February
Admission committee: Mid March

Tuition fees

Regular fee €850; please see conditions on the website for information on reduced fee
French social security scheme €217

Partial waiving of application fee on Social Criteria

Self-funded students who might have important financial difficulties can request a partial waiving of application fees. They have to file a specific application record before September 30th of the current academic year.

Once the file is submitted and the supporting documents are reviewed by a social worker designated by HEAR, a selection commission chaired by the Board Director or its legal representative and the two Deputy Directors or their legal representative, the HEAR Administrator or its legal representative take a decision on the request.

The partial waiving of application fee will only take effect on tuition fee paid to HEAR (consequently excluding the Music students who already paid their application fee to the university, the social security, preventive health services and other additional contributions)

Prepare your stay 23 – 25

Legal entry requirements

If you are a student from the European Union and the European Economic Area (EEA), Andorra, Monaco and Switzerland, you are exempt from visa and temporary residence permit requirements. You can come to France with a valid ID card or a passport.

Visa

If you are not a national from one of the countries listed above, it will be necessary to apply for a 'long stay' visa marked 'student' (approximately €99) at the French consular services in your country of residence. French consular services may require other documents in addition to your acceptance at

HEAR and a proof that you have sufficient financial means to live in France (approximately: €615/month). Find detailed guidelines to get your visa on the official French diplomatic website www.diplomatie.gouv.fr

Residence permit

In some cases, students with a one-year visa do not need a temporary residence permit and must go to the OFII, the procedure is explained upon reception of the visa.

Other students must apply for a temporary residence permit at the prefecture of Strasbourg or Mulhouse.

Mulhouse: Sous-Préfecture — 2 place du G^{al} de Gaulle, 68100 Mulhouse — www.haut-rhin.gouv.fr

Strasbourg: Préfecture — 5 place de la République, 67073 Strasbourg — www.bas-rhin.pref.gouv.fr
To apply for a temporary residence permit

(approximately €77), you must submit the original and a photocopy of the following documents:

- your passport
- an enrollment certificate
- a proof of financial resources (same given for the visa application)
- a proof of residential address
- a birth certificate
- 3 ID pictures

Budget

Main expenses

The average monthly budget for a student is estimated between €350 and €750.

It can vary between Strasbourg and Mulhouse and also depends on your personal lifestyle.

1 regular meal: 15–€25
1 cinema ticket: 4–€7
1 concert/show/theater ticket: 6–€60 (see page 36 for information on Carte Culture)

Montly expenses:

Rent: 200–€500
Food: 100–€150
Leisure: 50–€100

One time expenses:

French phone SIM card: €4
Bike: 40–€100
Annual housing insurance: 10–€50
Monthly top-up health insurance (mutuelle): 20–€40
Other set-up expenses (phone + electricity, etc.): €100
French Student Social security scheme: €215

Local prices:

1 one-way Tram/Bus ticket: 1.50–€1.70
1 monthly Tram/Bus pass: 19–€26.60
1 student meal: €3.25
1 fastfood meal: 5 €- 10

Mobility Grants

Ask your home institution

If you are an exchange student, please check which grants you can apply for with the help of the International Office of your home institution.

Campus France

Depending on your home country, you can find scholarship on Campus France that could help you to finance your studies in France.
campusbourses.campusfrance.org

Documents to bring with you

- Valid passport or ID card (original and photocopy)
- Visa (for students from non-EU/EEA countries)
- ID photos
- Valid European Health insurance card (students from EU countries)
- Proof of international health insurance (see page 30)
- Proof of liability insurance
- Sufficient cash (deposit for a room, tickets etc.)
- Bank statement to prove sufficient financial means (€615/month)
- Proof of Scholarship
- Birth certificate translated into French (for housing financial assistance see page 24)
- Copies of the pay slips and accommodation certificates of your parents or relatives (for housing guarantor see page 24)
- Unlocked phone for French SIM card
- Your printed portfolio

Arrival

By plane

Mulhouse

Euroairport www.euroairport.com

From the EuroAirport Basel-Mulhouse-Freiburg, a shuttle bus connects the airport to the Saint Louis's train station. There you can continue by train, ter SNCF, to Strasbourg. www.ter.sncf.com

Prevailing price level:

Saint-Louis– Mulhouse 6,10 €

Saint-Louis – Strasbourg 23,10 €

Strasbourg

The Strasbourg international airport www.strasbourg.aeroport.fr welcomes flights from more than 200 destinations.

A shuttle train connects the airport to the train station (9min ride, €4.30)

www.ter.sncf.com

By train

A high speed train (TGV) connects Paris Charles de Gaulle Airport (Terminal2) to Strasbourg (2 :30 ride)

The SNCF en.voyages-sncf.com offers many regular trains to Strasbourg and Mulhouse from Paris and other major cities in France and Europe. Fares vary a lot depending on the date of purchase.

Prevailing price level:

Paris–Strasbourg 25 €- 70

Paris–Mulhouse 30€- 90

By bus

The bus companies Eurolines, Flixbus and Megabus cover over 1,500 destinations in Europe.

www.eurolines.fr

www.flixbus.fr

freu.megabus.com

Bus stops:

Mulhouse: avenue du Général Leclerc

Strasbourg: 1, place de l'Étoile

By Car sharing

Within France the cheapest way to travel is by car sharing using Blablacar. www.blablacar.fr

Housing

Housing in Mulhouse and Strasbourg

HEAR does not have on-campus accommodation. However, the International Office can provide a list of offers for shared flats or apartments to rent (mostly offers from our outgoing students).

Student housing in Strasbourg

A few rooms in the Strasbourg student residency (Paul Appell & La Robertsau) can be reserved through the HEAR International Office.

If you are interested please contact

✉ international@hear.fr

CROUS– Student residencies

Centre Régional des Œuvres Universitaires et Scolaires is a public organisation which provides students rooms for rent at low rates.

Students need to create an account

www.messervices.etudiant.gouv.fr and fill out an online application (DSE–Dossier Social Etudiant) before April 30th.

Students applying after April 30th will be on a waiting list. Please write to:

✉ audrey.wirrmann@crous-strasbourg.fr

CROUS offices

Mulhouse

1, Rue Alfred Werner
t.+33 (0)3 89 33 64,644

Strasbourg

1, Boulevard de la Victoire
t. + 33 (0)3 88 21 28 00

Location et colocation | Rental and flatshare

You can also find a studio, a furnished room or a flatshare on these websites:

Student offer:

- www.adele.org
- www.crous-strasbourg.fr
- www.leclubetudiant.com
- www.mgellogement.fr
- www.lokaviz.fr

Flatshare:

- www.appartager.com

- www.colocation.fr
- www.colocoit.com
- www.lacartedescolocs.fr
- www.lacartedescolocs.fr
- www.recherche-colocation.com

General offer:

- www.immoregion.fr
- www.leboncoin.fr
- www.lecoindelimmo.com
- www.topannonces.fr

Temporary accommodation

Hostels

If you would like to stay in a hostel for a night or two while you visit apartments:

- www.fuaj.org
- www.ciarus.com

BnB

- www.airbnb.com

Free accomodation

- www.couchsurfing.org
- www.talktalkbnb.com get a free room in exchange for communication in your native language. More information see page 45, Learning French)

Housing budget

Garant / Housing Garant

Your landlord might ask for a Garant (a person who takes responsibility of the rent if it isn't paid anymore) before signing the lease. Consequently, we strongly advise you to bring with you copies of the pay slips and accommodation certificates of your parents or relatives who would be ok to take this responsibility.

If you can't find a garant you can apply to the French government garant organisation (CLE) on lokaviz website. www.lokaviz.fr

Frais d'agence | Agency fees

If you find your accommodation via a renting agency, you will generally have to pay a month's rent in agency fees. Also, beware of the agencies offering access to a list of accommodations available. The access to this list usually costs around €150 and this sum will not be reimbursed, even if you do not find any accommodation through this agency.

Caution | First deposit

Rent prices in Strasbourg and Mulhouse can vary between €200 and €500 per month (€180 in a student residency room). A first deposit will be required before you move in; it usually equals 1 month rent. This deposit will be refunded at the end of your stay if there hasn't been any damage to the property. There is also a mandatory subscription to annual housing insurance that can cost between €6 and €50.

APL | Housing financial assistance

You should check as soon as possible whether you are eligible for housing financial assistance in France. The Caisse d'Allocations Familiales (CAF) is a French state assistance fund which can provide housing aid called APL (Aide Personnalisée au Logement). The level of help depends on your income, type of housing and rent paid. In case of shared property, every tenant can benefit, but only with regards to the proportion of the rent. Each individual must apply separately.

For more information, please read the CAF brochure in English which explains the procedure step-by-step. www.caf.fr

CAF office:

Mulhouse
26 Avenue Robert Schuman
Strasbourg
18 Rue de Berne

Settling in France 28 – 38

Insurances

During your stay in France, you might be required to show proof of subscription to one or several types of insurance such as liability insurance, housing insurance or health insurance.

Assurance responsabilité civile | Civil liability insurance

If you unintentionally caused damage to another person or his/her property, your insurance agency will deal with the claim (this insurance is required to use or borrow certain equipment at HEAR).

Assurance logement | Housing insurance

By subscribing to this insurance, the apartment or room you rent and your possessions are covered against the risks of flood/fire damage or against burglary. This insurance often includes civil liability insurance but do check before subscribing.

See below contact and addresses for LMDE and MGEL agencies in Strasbourg and Mulhouse.

Assurance Maladie | Health insurance

Health insurance is a complex but essential point you will need to review before coming to France.

Exchange Students

As an exchange student, you are not required to register to French social security, but you must bring one of the 3 documents below:

- a European health insurance card (only students from EU/EEA). This card should be requested at your local health services agency in your home country. If you pay for healthcare services in France, this card will enable you to forward your requests for reimbursements to your health agency in your country.

- or a certificate of private insurance providing full coverage for medical risks, without restrictions related to cost, valid for the duration of the stay in France.
- or a SE401-Q-104 form issued by the Régie d'Assurance Maladie du Québec (only students from Quebec).

Regular students

If you don't have one of the 3 elements above or if you are a regular student, you need to subscribe to French Social Security: French Social Security (*Sécurité Sociale* or *Sécu*) is the state institution providing financial assistance to one's healthcare expenses.

As an exchange student, you have the right to subscribe to the student social security scheme*.

The subscription for the academic year 2016-17 costs €215

*If you are over 28 years old you cannot subscribe to student social security scheme, please enquire about the general social security scheme at the

Caisse Primaire d'Assurance Maladie (CPAM) in Strasbourg or Mulhouse
Social security works with reimbursement rates which allow from 15 to 70% of the total medical service fees to be reimbursed to the beneficiaries.

If you subscribe, you will be given a *carte vitale* that should be presented during visits to all healthcare professionals: doctors, medical specialists, hospitals, clinics, pharmacies. This card allows quick reimbursements of 15 to 70% of your healthcare expenses, and an additional 30% for those who have subscribed to top-up/complementary insurance.

Mutuelle | Complementary insurance

Social Security only reimburses part of your healthcare expenses. *Mutuelle*/complementary insurance will cover all or part of the difference between the medical service fee and the French social security reimbursement rate.

In Strasbourg and Mulhouse there are two student health insurance agencies, LMDE and MGEL.

LMDE
www.lmde.com

Strasbourg
6 C, place d'Austerlitz
t: +33 (0)1 40 92 54 85

MGEL
www.mgel.fr

Mulhouse
45, avenue du Président Kennedy
t: +33 (0)3 89 32 04 67

Strasbourg
4, Rue de Londres
t: +33 (0)3 88 60 26 26

Regular social security scheme

If you are not eligible for the Student social security scheme, please go to the CPAM (Caisse primaire Assurance Maladie) for general social security subscription.

CPAM
www.ameli.fr

Mulhouse
26, Avenue Robert Schuman

Strasbourg
6, Rue de Lausanne

MGEN
www.mgen.fr

Mulhouse
10, Rue Gustave Hirn

Strasbourg
4, Rue Henri BergsonHautepierre

Healthcare

Whether you are insured in France or in your home country, you are generally required to pay medical expenses as they occur: when visiting a doctor, buying prescribed medicine or for medical tests. Then you can ask to be reimbursed by your health insurer.

A general doctor may charge from €23 to €25 for a consultation.

Types of payment vary: doctors usually accept checks and credit cards, some might not accept cash.

The following medical center are accessible and English-friendly:

SUMPS

The *SUMPS* (Service Universitaire de Médecine Préventive et de Promotion de la Santé) is a student organisation in Strasbourg and Mulhouse which gives access to certain medical services (medical check, vaccin, social and psychological assistance etc.).

The annual registration fee to these services costs around €5 (please see HEAR Academic affairs offices to register)

Mulhouse

Service santé de l'UHA
1 rue Alfred Werner
Maison de l'étudiant – 1^{er} étage
t. +33 (0)3 89 33 64 45

Strasbourg

6, rue de Palerme
Monday to Thursday, from 8:30 am to 5:30 pm
Friday from 8:30 am to 5 pm
Contact – t. +33 (0)3 68 85 50 24
✉ sumps@unistra.fr
sumps.unistra.fr

Centre de santé MGEN | Healthcare center

Mulhouse

Possibility to go see a nurse
Maison de l'Étudiant
1, rue Alfred Werner
t. +33 (0)3 89 33 64 47
✉ linda.wendling@uha.fr

Strasbourg

Consultation with a general doctor is possible without an appointment. Appointments are mandatory for consultations with medical specialists, you can schedule an appointment by email.
4, Place du Pont aux Chats
t. +33 (0)3 88 21 14 60
✉ consultation642@mgen.fr

Bank

Opening a bank account in France is not mandatory but it can be useful during your stay in France.

For some regular payments (phone or rent) or for other transactions (such as refund from healthcare expenses or transfer of housing aid money), you might be asked to provide a *RIB* (*Relevé d'Identité Bancaire*), which provides your bank account details. It is available on your bank statements and in your check book. You can also print a *RIB* at an ATM machine or ask for one in your bank.

To open a bank account you will in most cases need to present the following documents:

- Your ID, your residency permit (titre de séjour),
- a proof of address including your name and address, (rent contract, phone bill), or a certificate from your landlord (attestation d'hébergement) with a copy of his/her ID and a bill with his/her name.

Phone

In order to communicate with your French friends and fellow students we recommend you to acquire a French phone number as quickly as possible.

Please give your French phone number to the International Office who might call you in case of emergencies.

Main and cheapest operators in France:

- www.b-and-you.fr starting at €2.99/month
- www.sfr.fr – offer RED de SFR starting at €2.99/month

- www.sosh.fr – starting at €4.99/month
- www.virginmobile.fr – starting at €5.99/month

Monthly payments are called forfait. Make sure to choose a forfait sans engagement as opposed to 12 months or 24 months contracts. You can compare online forfait prices on touslesforfaits or lebonforfait websites
www.touslesforfaits.fr
www.lebonforfait.fr

Emergencies

Emergencies (from mobile phones): 112

Medical emergency (SAMU): 15

Police: 17

Fire Brigade: 18

SOS Médecin | Home visiting doctor

You can reach a doctor anytime of the day and night who can come directly to your home. More information on SOS Médecin website
www.sos-medecins67.fr
t +33 (0)3 88 75 75 75

Student life

39-45

Transport

Biking

Most people in Strasbourg or Mulhouse ride a *vélo* (bike). We recommend you to buy a second-hand bike and to make sure to buy a good lock to minimize the risk of theft:

Leboncoin www.leboncoin.fr

VéloLand www.velolandstrasbourg.fr

You can also rent a bike from various agencies:
 Mulhouse: Velocité www.velocite.mulhouse.fr
 Strasbourg: Velhop www.velhop.strasbourg.eu

Train

In France there are different types of trains: TER (regional trains), Corail (regular trains), and TGV (high speed trains). If you travel by TGV you will need to reserve in advance.

The Réflexe Card allows you (and your friends) to benefit from up to 70% discount on weekends. The Tonus card (price: €19) allows you to obtain -50% off any train tickets within the Alsace region (age limit: 25)

You will find many low cost train tickets on www.ouigo.com

The Alsa+Campus card offers a weekly or monthly unlimited access to train, bus and tram rides between Strasbourg and Mulhouse. For prices and subscription, go the SNCF store at the train station with a school certificate, your student card, an ID and two photos. (age limit: 26)

More information about the Reflexe, Tonus and Alsa+Campus cards on SNCF website www.ter.sncf.com

If you plan to go to Germany as a group, you may buy a cheap ticket for regional trains for up to 5 persons. www.bahn.de

This ticket will be valid from Kehl (Strasbourg) or Müllheim (Mulhouse) on.

Bus

The bus companies Eurolines, Flixbus and Megabus cover over 1,500 destinations in Europe. www.eurolines.fr
www.flixbus.fr
www.freu.megabus.com

Bus stops:

Strasbourg
 1, Place de l'Étoile

Mulhouse

Avenue du Général Leclerc

If you travel to or in Germany the cheapest bus is Meinfernbus www.meinfernbus.de

Car sharing

Within France the cheapest way to travel is by car sharing using Blablacar. www.blablacar.fr

Public transportation

In Mulhouse: the bus&tram Solea card costs €19.50/month (age limit: 26) www.solea.info

In Strasbourg: the bus&tram Badgéο card costs €23.20/month (age limit: 25) www.cts-strasbourg.eu

Shopping guide

Supermarkets

Grocery shopping prices may vary depending on the stores. Auchan and E-Leclerc are the two largest supermarket chains in Strasbourg and Mulhouse. They both have their own low budget product lines for daily consumption that are nevertheless of good quality.

Lidl, and Aldi are discount stores usually located outside of the city center. Carrefour City and U express are small supermarkets located in the center but they offer a reduced selection of products. Organic food can be found at Biocoop and Naturalia stores.

You will be able to pay by credit card in most of these stores. Opening hours may vary from 7 am to 9 pm. All stores are closed on Sunday, sometimes on Monday and on public holidays, except for Carrefour city which is open from 9 am to 1 pm. From Strasbourg you can also easily go shopping in Germany (Kehl) where some products are cheaper.

Student association ASEF Strasbourg

A distribution of basic weekly grocery products is held by the student association ASEF every Wednesday at 6 pm for a contribution of €1. This service is dedicated primarily for students with lower resources. To register and get the ASEF access card you need your student card, and 1 ID photo.

ASEF Centre Bernanos : 30, rue du Maréchal Juin
 AGORAé Strasbourg Gallia
 1 place de l'Université
 AGORAé Strasbourg Esplanade
 1 place d'Athènes

Open Markets

Buying fresh fruit and vegetables can be cheaper at the open markets.

Mulhouse food market agenda www.mulhouse.fr

Strasbourg food market agenda marches-strasbourg.fr

Second hand shops

If you want to find souvenirs or antique furniture, you can visit the Emmaus shops:

Mulhouse: 4 avenue alsace, Cernay
 Strasbourg : 5 Chemin de la Holtzmat, Montagne Verte

Or second hand boutiques

Mulhouse :

Am Stram Gram : 56, rue du Printemps
 Boutique Myrtille : 8, rue Poincaré

Strasbourg :

Le Léopard : 8, rue des Veaux
 Froc'N Roll: 10, rue Ernest Munch

For second hand goods sale check vide-greniers website www.vide-greniers.org

The best website to find cheap furniture, phones, bikes etc ... is Le Bon Coin www.leboncoin.fr

Art supply stores

Mulhouse:

Rougier&Plé: 10, rue de la Justice
 Artéis Rixheim : 124, rue de l'île Napoléon
 68 170 Rixheim (close to Mulhouse)
 Cultura in Kingersheim Shopping mall Kaligone: 90, rue de Guebwiller 68260 Kingersheim.
 Access: tram 3, Tram 1 and Bus 23 (3 changes, approx. 40 min of travel)

Strasbourg:

Le Géant des Beaux-Arts :
91, route Romains, Koenigshoffen
(Students can get a -15% discount card)
Lana Papiers Speciaux II :
139, route de la Wantzenau
Graphigro: 4, rue du 22 Novembre

Music storesMulhouse :

Musique Galland : 49, avenue du Président
Kennedy, 68100 Mulhouse
Aux Guitares : 63, avenue de Belgique,
68110 Illzach
Dino Music: 59, rue de la Source,
68790 Morschwiller-le-Bas

Strasbourg :

Wolf Musique : 24, rue de la Mésange
Arpeges Armand Meyer: 21, rue de Lausanne

Professional experience in France

Student jobs in France

Students from the European Union and the European Economic Area (EEA), Andorra, Monaco and Switzerland have the right to work in France during the course of their studies and do not need a work permit.

The temporary residence permit entitles foreign students to a right to work in France. Students with a long-stay visa benefit of the same rights throughout the period of validity of their visa. At least 2 days before the first day of work,

the employer will have to write a declaration of employment in the Strasbourg or Mulhouse Prefecture office, and join a copy of your ID card, your residency permit or visa, and the employment contract stating the dates of beginning and end of work period and the amount of work hours. The volume of work is limited to approx. 964 hours per year (please check with the Prefecture). The employer just needs to send an email to employeurs-etrangers@bas-rhin.prefgouv.fr

Internship in France

A student internship is not classified as employment and doesn't require a permit. However, an *convention* (internship agreement) is required. This agreement between the student, the company and HEAR defines the type of work, training and conditions (hours, place of work, allowances).

If you are registered as regular student at HEAR you can ask for an Internship Agreement in the

Academic Affairs Office. As an exchange student, you will have to ask your home university to issue the Internship agreement. The International Office at HEAR can help in drafting the document. You can also check with your home university for internship possibilities within the ERASMUS+ program (min. length 2 month) and you can consult internship offers on the school's information board.

Student community and university services

Student community

Strasbourg aime ses étudiants

The city of Strasbourg organises a welcome program for new students.
www.strasbourgaimesesetudiants.eu

Maison Universitaire Internationale

La Maison Universitaire Internationale www.unistra.fr is related to Strasbourg University and is a place where Foreign students can rent a studio, develop collaborative projects, find practical information about their stay and participate to multicultural events. They animate a facebook page with open calls and useful tips [f international.unistra](https://www.facebook.com/international.unistra)

Strasbourg

15, rue du Bassin d'Austerlitz

JAA – Jeunes Ambassadeurs Alsace

The JAA Association welcomes every year foreign students in Strasbourg and connects them to French families.
www.jeunes-ambassadeurs-alsace.com

ESN – Erasmus Student Network

ESN activities revolve around organising various events, providing help and support for incoming foreign students and promoting international mobility abroad. The local Strasbourg ESN group is formed with about 20 volunteers.
strasbourg.ixesn.fr
[f esn.strasbourg](https://www.facebook.com/esn.strasbourg)

CROUS' services

Restaurant Universitaire (RU) – Student Cafeteria

A university service that offers to students meals for €3

Mulhouse**RU Mulhouse**

5, rue Alfred Werner

RU de la Fonderie

16, rue de la Fonderie

Strasbourg**R.U. Esplanade**

32, boulevard de la Victoire

R.U. Paul Appell

10, rue de Palerme

IZLY

IZLY is a service attached to your student card and a mobile app allowing you to pay for various campus and CROUS services such as RU restaurants, photocopies, etc...

You can transfer money from your bank account to your IZLY profile by using IZLY services points or by downloading the app.

CROUS Social Assistance

This service helps students to overcome daily issues such as finances, housing, health, family... Don't hesitate to call to schedule an appointment with an assistant in Mulhouse or Strasbourg
www.crous-strasbourg.fr

Public Libraries

There are various libraries in Strasbourg. One of them, la médiathèque André Malraux is located in the city center and offers a great variety of books and DVDs. This médiathèque also offers a variety of French language study guides. You will be able to consult anything for free inside the médiathèque, and you can also register (card price: €4) and be able to borrow up to 10 books for 4 weeks.

Mulhouse

Bibliothèque Grand'rue
19, Grand'rue BP 1109
Bibliothèque Universitaire
8, rue des frères Lumière
Bibliothèque Universitaire Fonderie
Campus Fonderie, 16, rue de la Fonderie

Strasbourg

Médiathèque André Malraux
1, Presqu'île Malraux
Bibliothèque nationale et universitaire (BNU)
6, place de la République

Activities

AV LAB – Strasbourg

Strasbourg's Fab Lab offers: 3D printer, 3D scanner, CNC milling machine, lazer cutter, vinyl cutter, models workshop
You have to provide an Assurance responsabilité civile (civil liability insurance).
Price for one year admission: €10
You can rent machines per hour, but will need to follow an initiation beforehand. Prices can vary per machine.
Shadok (first floor), Les dock's, 25, Presqu'île André Malraux
www.av-lab.net

University choir

Mulhouse: [culture UHA](http://culture.uha.fr)
www.culture.uha.fr
Strasbourg: evus.unistra.fr
You can play the piano in the train stations of Mulhouse and Strasbourg.

SUAPS

In Strasbourg, SUAPS offers 60 different physical activities in various forms and levels, adapted to your schedule: fitness, team sports, water and nautical activities, gymnastics, dancing, outdoor sports, etc. The yearly registration fee costs around €35.
www.sport.unistra.fr

Swimming pools

Mulhouse
One entrance (student price) costs: €2.80.
• Piscine Pierre et Marie Curie : 7, rue Pierre et Marie Curie
• Piscine de l'Illberg : 51, boulevard Stoessel

Strasbourg

One entrance (student price) costs: €2.20.
• Bains municipaux de Strasbourg (just behind Visual Arts Campus), 10, boulevard de la Victoire
• Piscine de la Kibitzenau
1, rue de la Kibitzenau
• Piscine du Wacken (outdoor heated pool)
8, rue Pierre Courbertin

Carte Culture

With HEAR in Strasbourg and Mulhouse, you have the possibility to buy the Carte Culture (Price: €7).
www.carte-culture.org
This card offers many price reductions for shows, movies, theatres and free access to 23 museums in Alsace.

You find information about cultural events and tickets in the Boutique Culture:
Strasbourg
10, place de la Cathédrale

Going out

Museums and galleries

Museums entry in Strasbourg and Mulhouse are free with the Carte Culture (see page 36 – Carte Culture).
Some French, Belgian and Swiss Museums offer a free entry on the first Sunday of every month.
You can buy the Museums pass (€92) that gives you unlimited access to French, German and Swiss Museums. www.museumspass.com

Mulhouse

- Museums : www.musees-mulhouse.fr
- Kunsthalle : www.kunsthallemulhouse.com
- Motoco/Openparc www.openparc.org
- Le séchoir www.lesechoir.fr
- Réseau Dédale
- La Manufacture : 17, rue de Quimper (Manurhin)
- Motoco : motoco.me

Strasbourg

- Museums www.musees.strasbourg.eu
- Apollonia www.apollonia-art-exchanges.com
- CEAAC www.ceaac.org
- Syndicat Potentiel www.syndicatpotentiel.org
- La Chambre www.la-chambre.org
- Stimulation www.stimulation.org
- Le Shadok www.shadok.strasbourg.eu

Cinemas

Mulhouse
• Le bel Air : 31, rue Fénelon, www.cinebelair.org
• Le Palace : 10, avenue de Colmar
www.lepalacemulhouse.com
• Le Kinépolis : 175, avenue Robert Schuman
www.kinepolis.fr

Strasbourg

- Star : 27, rue du jeu des enfants
- Star Saint-Exupéry : 18, rue du 22 novembre
www.cinema-star.com
- Odyssée : 3, rue des Francs Bourgeois
www.cinemaodysee.com
- Vox : 17, rue des Francs Bourgeois
www.cine-vox.com
- UGC Ciné Cité : 25, route du Rhin www.ugc.fr

Concerts

Mulhouse
• Noumatrouff : 57, rue de la Mertzau
www.noumatrouff.fr
• La Filature : 20, allée Nathan Katz
www.lafilature.org

Strasbourg

- La Laiterie : 15, rue du Hohwald
www.artefact.org
- Le Molodoï : 19, rue du Ban de la Roche
www.molodoi.net
- Philharmonic Orchestra of Strasbourg:
www.philharmonique-strasbourg.com

Theaters

Mulhouse
• La Filature www.lafilature.org
• L'entrepôt www.lentrepot.org
• Théâtre de la Sinne

Strasbourg

- TNS www.tns.fr
- The Maillon www.maillon.eu
- Opera house www.operationaldurhin.eu
- TAPS www.taps.strasbourg.eu

Bars

Mulhouse
• Le Gambinus : 5, rue des Franciscains
• Les Copains d'Abord : 13, rue Louis Pasteur
• Le Greffier : 16, rue de la Loi
• LC 2 : 17 rue Henriette
• L'Avenue : 8, boulevard de l'Europe

Strasbourg

- Le Brasseur : 22, rue des Veaux
- L'Atlantico : quai des Pêcheurs
- L'Académie de la Bière : 17, rue Adolphe Seyboth
- Mudd Club/Zanzibar/Phonographe :
place Saint Étienne
- La Taverne française :
12, avenue de la Marseillaise
- Le Korrigan : 20, rue du Vieux Marché aux Grains

Local cultural information

Newspaper

DNA – Dernières Nouvelles d'Alsace is the leading daily paper in Alsace. In the Culture column you will find all the information about exhibitions, shows, theaters etc., with a supplement on culture on Wednesdays. On sale in kiosks: €1

Free cultural magazines

You can find the following magazines at HEAR or in different museums, bars and shops.

Artline: Contemporary art magazine bilingual in German and French, concentrated on Germany (South), Switzerland (Nord East), France (Grand Est), Austria (West), Liechtenstein and Luxembourg.

Coze: an agenda focusing on concerts (only in Strasbourg)

Journal des Spectacles : List of shows and events in Alsace

Poly: an essential magazine for detailed information about the cultural and artistic life in Strasbourg. A magazine illustrated, among others, by former HEAR students. Discover!

Novo: a magazine editing articles and an events calendar on Strasbourg and Mulhouse cultural life

Zut! : general information about Strasbourg and Mulhouse cultural life.

Online cultural agenda

Alsace

Cultural news from the Grand Est region and its border countries
www.info-culture.com

Contemporary art network and agenda
www.versantest.org

Concerts
www.musiqueactuelles.net

Mulhouse

Mulhouse Curieux
www.mulhouse.curieux.net

Strasbourg

Strasbourg Curieux
www.strasbourg.curieux.net
Strossburi
www.strossburi.eu

Your studies at HEAR 39 – 44

Practical Information

Taïga

Taïga is the academic network and database, accessible to HEAR students and staff. You can access it by clicking on 'Taïga' (at the bottom of hear.fr menu page) and 'accès étudiant' (student access). Taïga allows students to choose their study programme, find information about time and room schedules, to upload and download administrative documents such as registration certificate and transcript of records.

Carte étudiant | Student card

This is the HEAR student card. It is given to all students upon enrolment. It serves various valuable purposes such as paying at the university restaurants and cafeterias, borrowing documents and books from libraries, using copiers and printers. You can also load your public transportation tickets on this Pass or use it as a travel card.
www.passcampus.fr

E-mail address and Office 365

Once accepted as a student at HEAR you will receive a @hear.fr email address. The administration of the school will communicate with you only through that address. The Office 365 platform makes it easier to contact and share documents with students and teachers. This e-mail account will be disabled once you leave the school.

Here are the 5 steps to set up an automatic transfer from your HEAR e-mail account to your personal one:

1. log in login.microsoftonline.com;
2. click on the 'settings' icon;
3. click on 'Courrier';
4. click on 'Transfert';
5. type in your personal e-mail address and click 'Enregistrer' to save.

Student Associations

Mulhouse Visual Arts Campus

Very involved in school life, especially during the Tranches de Quai evenings, it is an essential resource for the students. The association plans events for students and provides school supply for sale. The membership is free.

Contact: ✉ lalala.mulhouse@hear.fr

Strasbourg Visual Arts Campus

La Mine is an association created by and for the students. The association plans regular friendly get-togethers in the student bar and may provide financial or material support for individual or collective projects. All students are invited to join. The membership costs less than €10/year.

Contact: ✉ lamine.strasbourg@hear.fr

Photocopy machines

Mulhouse Visual Arts Campus

Please contact the Academic Affairs Office for information about the color laser printer available. You will need printing credits (crédits

d'impression) to be able to print. You can scan documents for free in the Digital lab.
Rates: according to size (A4/A3), black & white or color.

Strasbourg Visual Arts Campus

Two photocopy machines (at the library and the Annex building) are accessible to students with a copy card (available for purchase at the Finance Office). Rates: 250 units = €10.50, 500 units = €20.50

You can also scan documents for free if you bring your USB drive to the Library.

Cafeteria

Académie supérieure de Musique of Strasbourg
The Foyer des étudiants room has a microwave.

Mulhouse Visual Arts Campus

The cafeteria offers vending machines, a refrigerator and a microwave. Everyone can eat there, provided they clean up afterwards. The refrigerator will be completely emptied every Friday night.

Strasbourg Visual Arts Campus

The student bar is in the Annex building and is accessible all week long. Vending machines are available in the Patio in front of the auditorium (Main Building).

HEAR Libraries

Académie supérieure de musique of Strasbourg
The library of the Strasbourg Conservatory of Music is accessible for free. You can consult over 40,000 documents: music scores, specialised books and periodicals on music, dance and theatre, CDs, DVDs.

Opening hours

- Monday, 2 pm – 5 :30 pm
- Tuesday – Thursday, 9 am – 5 :30 pm
- Saturday, 9 am – 12 :30 pm

Mulhouse Visual Arts Campus

Apart from the Art and Design fundamentals, you can also find documents on sound experimentation, as well as specific resources in relation to professionalisation, audiovisual funds and periodicals.

Opening hours

- Monday – Friday, 9 am – 6 pm

Strasbourg Visual Arts Campus

You can sign up for free, with your student ID.

You may borrow up to 8 documents for 3 weeks. The multimedia library has a collection of 41,000 documents at your disposal: books, magazines, and videos, multimedia documents. Its aim is to accompany the students' research and work, by offering updated references in close relation with HEAR's creative and pedagogical process.

Opening hours

- Monday – Thursday, 8 am – 6 pm
- Friday, 9 am – 1 pm and 2 pm – 5 pm

HEAR Music Room

A HEAR Music room is located in the Annex building of the Strasbourg Visual Arts Campus. You will receive information messages on your HEAR e-mail address on how to register to the HEAR Music room to practice or listen to music.

WiFi

Académie supérieure de musique of Strasbourg
You have free and unlimited access to Wifi which is available in the building. Select the 'Straswifi' network on your device and follow the instructions.

Mulhouse Visual Arts Campus

You can access the school's WiFi named 'HEAR' with the password 'Hear@2016'

Strasbourg Visual Arts Campus

You can access the WiFi network named 'HEAR' in the main building and the annex building with the password 'Hear@2016' (capital letter included) Once connected to the WiFi, you will need to log in your student account with a username (in one word and small characters): the first letter of your first name and your full last name, and a password: your birth date (in this format: ddmmyy)

Digital labs

Académie supérieure de musique of Strasbourg
You can access computers available in the library.

Mulhouse Visual Arts Campus

There is one Digital lab, you can use the computers using your personal student account. The usernames and password will be sent to you by e-mail.

Strasbourg Visual Arts Campus

There are two Digital labs, one in the Main building and one in the Annex building. Log into your student account with your personal username: the first letter of your first name and your full last name (in one word and small characters), and a password: your birth date (in this format: ddmmyy)

Aide à projet étudiant | Student project grant

This financial and methodological grant (of maximum 500 €, not exceeding 50% of the project's budget) aims at encouraging and supporting student initiatives with a public dimension (exhibitions, performances, concerts, editions, etc.). After validation by the coordinator teacher, the project is submitted and presented orally to the HEAR Project Grant Commission.
Contact: ✉ anne.guyonnet@hear.fr

Exhibit spaces

Students can experiment hanging their work in a space, under the responsibility of a faculty member, in Mulhouse (Room 4 – Paintings–,

Gallery 2, Hall, Le Plateau) and in Strasbourg (Le Patio, Le passage, l'Atelier d'Artiste and the Cube). On these occasions, the exhibition team can help the students with regards to diverse technical aspects of hanging, photographing and lightening an exhibition. You need to reserve the space well in advance by contacting the exhibition team:
Mulhouse: ✉ olivier.letang@hear.fr
Strasbourg: ✉ antoine.lejolivet@hear.fr;

Installations that require transforming the premises (painting, moving, drilling, occultation, etc.), or a particular use of the school's park must previously be subjected to approval. Please contact International Office for more information. Any unauthorized installation will be immediately removed.

La Chaufferie

Throughout the year La Chaufferie, HEAR's gallery, hosts exhibition, as well as cultural events and projects.
5, rue de la Manufacture des Tabacs, Strasbourg

Exchange Students

First days at HEAR

Trombinoscope

At the beginning of each semester, the trombinoscope (pictures and contacts of exchange students) is sent to the administrative staff, the teachers and the students of HEAR so that they can easily identify you and contact you on your HEAR e-mail address.

Welcome meeting

The International Office aims at making the transition as easy as possible for all our new students who are adjusting to a new country, language and culture. A specific welcome meeting is held at the beginning of each semester for exchange students. We will give you all useful information regarding your stay in Mulhouse or Strasbourg and regarding your studies at HEAR.

Registration certificate

During the welcome meeting each student will be given a *certificat de scolarité* (registration certificate). You might need this document to show proof of arrival in your home university, to apply for housing financial assistance or for other types of grants in your home country.

Communicating with teachers

The best way to reach teachers is via e-mail. We recommend you to set a meeting with your coordinator teacher at the beginning of the semester to talk about your work and your objectives regarding your exchange semester at HEAR. Please go to the *Academic affairs & mobility office* if you have any doubt regarding time and room schedules of classes.

Choosing classes

It is possible for exchange students to attend classes from a different department as long as they follow the main classes of their department, specialisation or workgroup. You should first ask the teacher about space availability in each and prerequisite which varies. Talking about the course offer with your coordinator teacher and classmates within the first 3 weeks of the mobility can be helpful.

Learning Agreement

The learning agreement must amount to a minimum of 30 ECTS credits per semester.

Académie supérieure de musique of Strasbourg

The Learning Agreement will be filled out with the Academic Advisor. Please contact Thibaut Gildensperger to set up an appointment with the Academic Advisor, Gilles Oltz.

Mulhouse and Strasbourg Visual Arts Campus

You have up to 3 weeks after the beginning of the semester to define your study programme. We recommend you to try out as many classes as possible, in order for you to find the best suitable programme and schedule. Don't forget to talk with your teachers and classmates who can also recommend you specific classes.

Validating your exchange

Final oral presentation and examination
By the end of the semester you should prepare for the bilan or évaluation (final oral presentation) which consists of a final exhibition and oral presentation of all your works done during the semester. You have to pass this presentation in

order to obtain your grades and credits.

Please talk with your coordinator teacher to set the date for your bilan and let the International Office know about the time and place.

On the other hand It is important to check again the course requirements to validate each class listed in your Learning Agreement in order to obtain the credits.

Grading scale

A > Excellent

B > *Très bien* | very good

C > *Bien* | good

D > *Assez bien* | satisfactory

E > *Passable* | correct

FX > *Échec (un travail supplémentaire est*

nécessaire) | fail (extra work is needed)

F > *Échec* | fail

Transcript of records

A Transcript of records will be issued within 5 weeks after the end of the exchange period. This document will show the semester dates and therefore works as an Attendance certificate. Students will be able to download their transcript of records via Taiga, HEAR's academic network and database.

Leaving HEAR

You are expected to stay until the end of the semester. If for some personal reason you have to go back home earlier, please inform the International Office and your home institution by email. Be aware that if you leave more than a week before the end of the semester, you might have to partially reimburse your mobility grant to your home institution.

Exchange students highlights

International mobility week

Exchange students can present their school during the International mobility week.

Mulhouse: 16 – 20 Octobre

Strasbourg: 23 – 27 Octobre

exhibition outside of the school at the end of their stay. If you are interested please contact the International Office at least 2 months before the end of your mobility.

Good Bye Event

A friendly moment organised by the International Office to close the exchange students' semester.

End of semester project

Incoming exchange students have the possibility to organise a collective event, a publication, or

Extension of studies

If you start your stay in the fall semester you can extend the length of your study period for one semester.

It is essential that you first acquire permission via email, from your home institution and then from your coordinator teacher at HEAR.

If you are interested in applying at HEAR as a regular student for the following academic year, please check application procedures and deadlines page 21.

Regulation and safety

Room access

Opening of the school

Students are asked to respect the school's opening hours. The different campuses might be exceptionally opened during certain holidays for students in their graduation year.

For more information please contact the Academic Affairs office.

Mulhouse Visual Arts Campus

Most rooms are open and accessible without authorisation. For technical workshop rooms, please go to the Reception.

Sonia Zouache

+33 (0)3 69 77 77 20 | +33 (0)6 16 31 03 28

Académie supérieure de musique of Strasbourg

In order to borrow the keys from a specific room please go to the Reception.

Strasbourg Visual Arts Campus

If you need to access a specific room, you can ask to borrow the key at the Reception. However, students are not allowed to go home with keys that belong to the school. It is important that you give the key back before the end of the day. If the Reception is closed, please drop off the key in the mail box next to it.

Isabelle Keller +33 (0)3 69 06 37 77 |

+33 (0)6 23 88 64 36 | +33 (0)6 23 88 64 38

Security at HEAR

Technical workshops

Their use is coordinated by the faculty, artistic teaching assistants and technicians. In their absence, trained instructors can provide access to some of the studios. To get in, the student should first contact the studio manager, to learn about the personal safety equipment and how it works.

Good to know: most of the workshops require following an initiation before using the infrastructure independently. Consult the *Guide de l'étudiant* (student guide) and the website for updated information.

You can borrow some of the technical workshops equipment if you show proof of subscription to liability insurance.

Installations

Installations that require transforming the premises (painting, moving, drilling, occultation, etc.), or a particular use of the school's park must previously be subjected to approval. Please contact International Office for more information. Any unauthorized installation will be immediately removed.

Specific security measures

Please ask about the security equipment necessary in certain workshops to avoid injuries. It is forbidden to bring chemical products to the school, smoke inside the buildings and park in the garden (please ask authorisation from the Reception to load or unload heavy materials). Please signal to the Reception any dysfunction in the school premises (water leak, light bulbs, etc.)

You can find the complete security rules in the *Guide de l'étudiant* in the *Règlement et sécurité* section. Please see the Reception before changing the setting of a room for an exhibition.

Learning French

45 – 46

Language centers

You have free access to the Mulhouse and Strasbourg language centers which offer many resources: books, newspapers, computers with language software, tutoring with other students. A visit of the buildings and a presentation of the language center will be held at the beginning of each semester.

CLAM – Mulhouse

6, rue des frères Lumière
www.clam.uha.fr
 Opening hours:

Monday to Thursday 8:30 am to 6 pm
 Friday 8:30 am to 1 pm

SPIRAL – Strasbourg

Le Pangloss, 2, allée René Capitant
www.spiral.unistra.fr
 Opening hours:
 Monday-Thursday 12 am to 8 pm
 Friday 12 am to 5 pm

PEGE Building (2nd floor, room 216)
 61 avenue de la Forêt Noire

Free Linguistic Tandems and meetings

Here are a few ways to practice French in a more informal atmosphere.

SPIRAL

You can form a tandem with a student from Strasbourg University by using the SPIRAL tandem platform.
www.spiral.unistra.fr

Talktalkbnb

A supper, a bed for the night and breakfast is offered by your hosts. All they want from you in return is for you to talk to them in your native language. A good way to avoid the hotel/hostel

and meet new people on your first days in France!
www.talktalkbnb.com

Language meetings in bars

In Strasbourg, language meetings are organised every month in different bars and cafés. Les savons d'Helene www.lessavonsdhelene.fr
 FrenchEnglishTandem Strasbourg
 FrenchEnglishTandemStrasbourg
 Franglish Strasbourg
www.strasbourg.franglish.eu
 ESN-Strasbourg www.esn-strasbourg.eu
 LCF Magazine: www.lcf-magazine.com

Fee-based French classes

Université populaire européenne

If you would like to take French classes on a more regular and intensive basis, you can check the classes at the Université populaire.
www.u-populaire-europeenne.com

IEEF – Institut International d'Études Françaises

IEEF offers intensive French classes of one, two or three weeks in August.
www.iief.unistra.fr

Alliance Française

The Alliance Française offers different teaching programmes depending on the type of course you are looking for.

Programmes can be taken over a period of 3

months and will finish with a TCF – Test de Connaissance du Français (Aptitude Test in French)
www.afstrasbourg.eu

Learn French Online**Erasmus+ Online Linguistic Support**

Exchange students within the Erasmus+ programme can ask their the Sending institution about the possibility to access language course on the OLS platform.

Online tandems

You can also find a tandem online on the national Linguistic Tandem website or on My Language Exchange website.

www.tandem-linguistique.org

www.mylanguageexchange.com

Online exercises and podcasts

Relais website : relais.weebly.com

Spiral www.spiral.unistra.fr

Savoir.rfi savoirs.rfi.fr/fr

Apprendre tv5monde

www.apprendre.tv5monde.com

Podcast francais facile

www.podcastfrancaisfacile.com

Bonjour de France

www.bonjourdefrance.com

Practice for the DELF, DALF et TCF exam

On CIEP website www.ciep.fr

Smartphone apps

Duolingo

Memrise

Busuu

Events not to be missed 47 – 48

... at HEAR**Hors Limites, November 13th – 17th 2017**

The Hors Limites week changes the school's daily routine. The usual schedule is stopped and is replaced by workshops. The detailed program will be published on the school's website. In order to register, please contact the *scolarité* (Academic Affairs office) of your campus. Deadline: end of October.

International Mobility week

During one week events around International student and staff mobility will happen in both the Mulhouse and Strasbourg Visual Arts Campus. Students and teachers having gone abroad during the 2015/16 Academic year will present their experience through oral presentations and an exhibition. As foreign students we will ask you to present your schools, cities and countries to the other students at HEAR. There will also be presentations on how to apply for artistic residencies abroad and how to organize artistic projects internationally.

Mulhouse: 16 – 20 Octobre

Strasbourg: 23 – 27 Octobre

Mulhouse Workshop Week n°1:

January 29th – February 1st, 2018

Tranches de Quai February 1st, 2018

Tranches de Quai is an evening event at the Mulhouse Visual Arts Campus with exhibitions

and performances presenting the results of a week of workshops as well as the works of invited artists.

Open school Day in Mulhouse, February 2nd – 3rd, 2018

During the open school day, you will be able to meet teachers and students who can tell you all about studying at HEAR and how to apply.

Avant Première

Avant Première is a student organised exhibition that takes place on the entire Strasbourg Visual Arts campus. If you are interested in participating do not hesitate to talk about it to your friends and classmates who will put you in contact with the coordinating student team.

Mulhouse Workshop Week n°2:

April 3rd – 6th, 2018

Weekend des diplômés/Diploma Show, June 28th – July 1st, 2018

The Diploma Show allows you to discover the work of students that have graduated on the Master level at HEAR. During two days, an overview of the work – Art, Communication, Design, Music, Scenography is presented to the public on the Strasbourg Visual Arts campus and at the Académie supérieure de musique.

... in Alsace

Journées du patrimoine/French Heritage Days
journesdupatrimoine.culturecommunication.gouv.fr

Musica, September/October
www.festivalmusica.org

Osophère, April/May
www.artefact.org/lososphere

Jazzdor, November
www.jazzdor.com

Art3f Mulhouse International contemporary art fair, November
www.art3f.fr

St'art international art fair, November
www.st-art.fr

Regionale exhibition in Basel, Freiburg, Mulhouse and Strasbourg, Novembre/January
www.regionale.org

Week-end de l'art contemporain—Versant Est
www.versantest.org

This 3rd week-end of March is dedicated to exhibitions, meetings, workshops, concerts, happenings, screenings, all over Alsace.

Central Vapeur, Illustration festival March/April

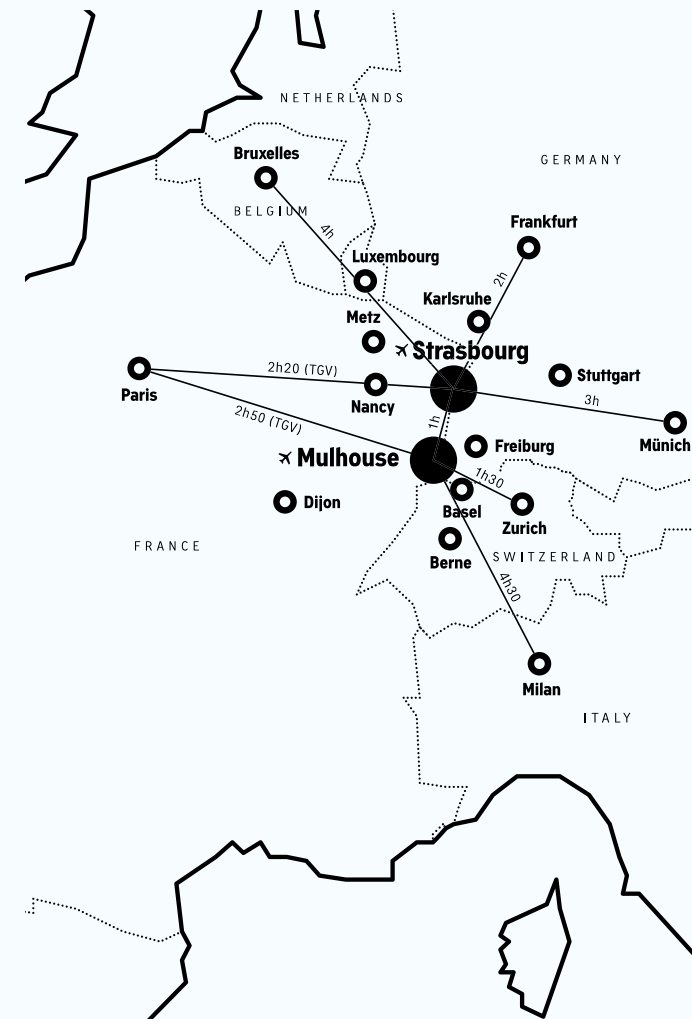
Atelier Ouverts, May
www.ateliersouverts.net

In May, all over Alsace, over 500 artists open their studios.

Artefacts festival June
www.artefact.org

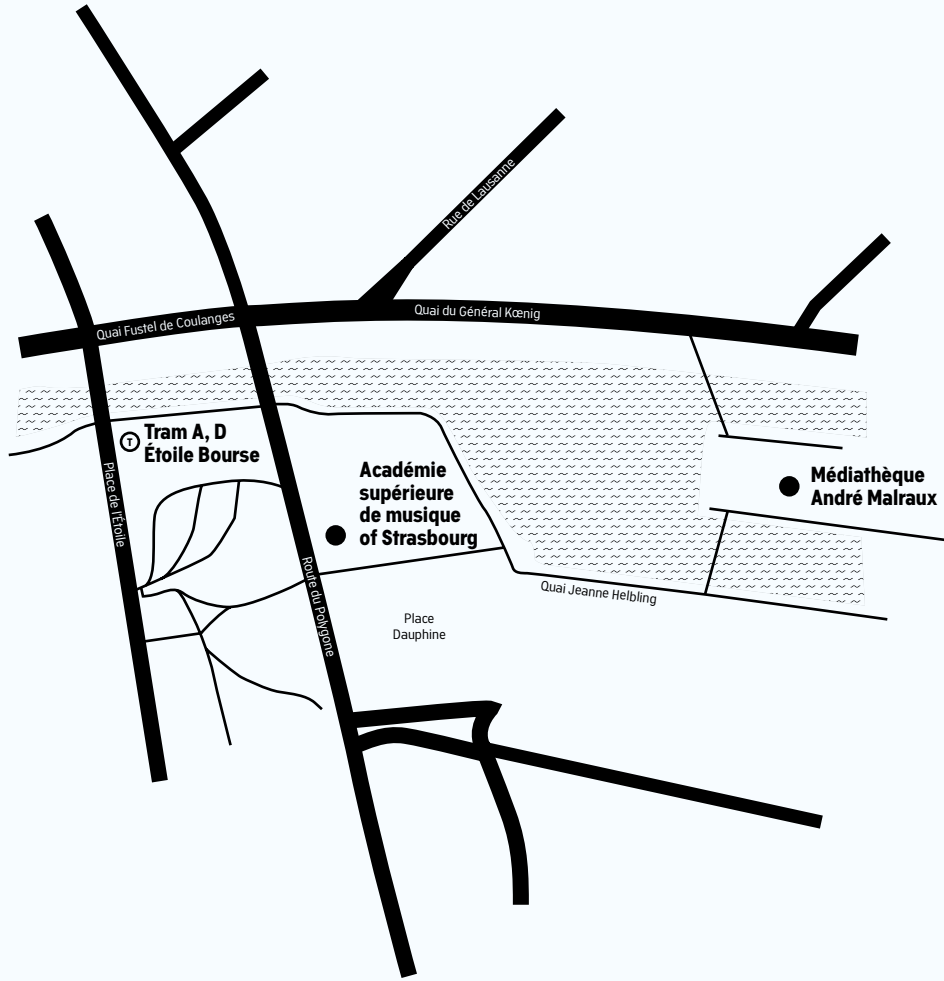
Maps 60-70

Where is HEAR?



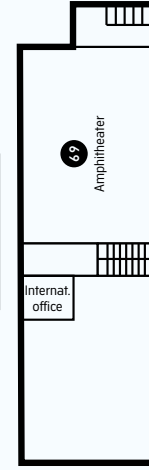
Académie supérieure de musique of Strasbourg

Haute école des arts du Rhin
Académie supérieure de Musique
1 place Dauphine

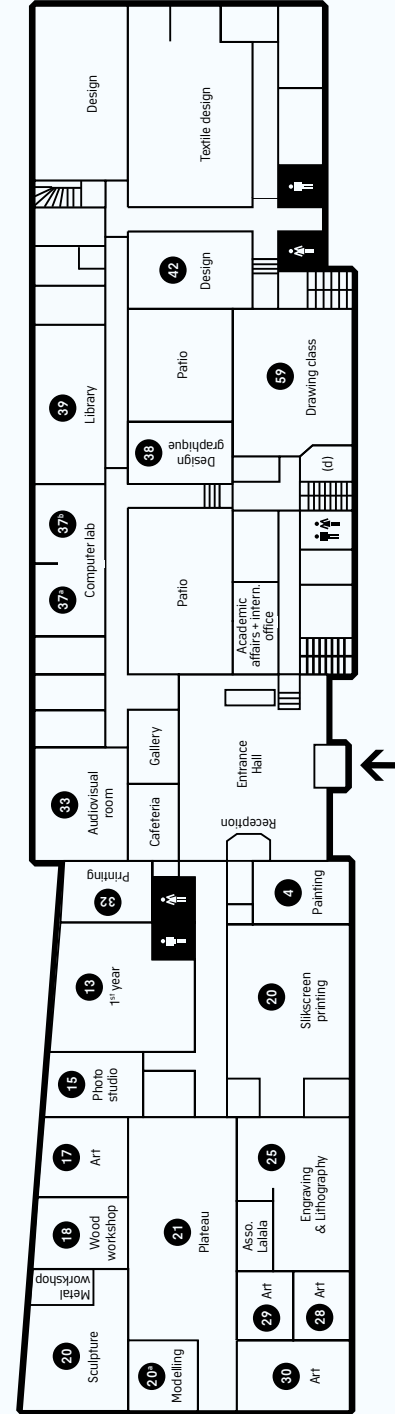


Mulhouse Visual Arts Campus

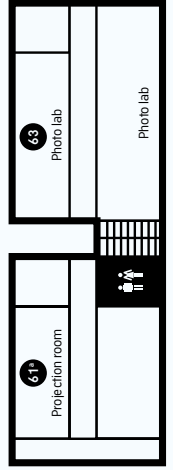
First floor



Ground floor

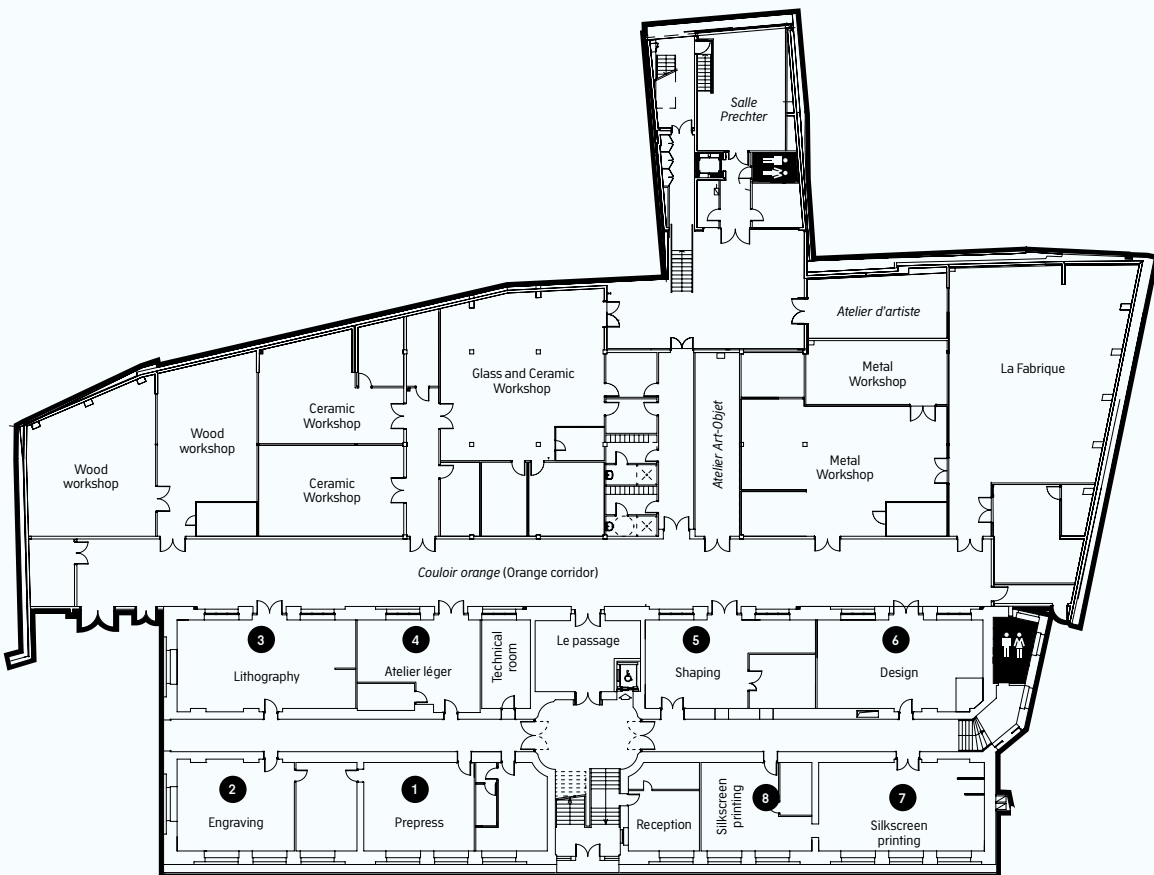


Basement

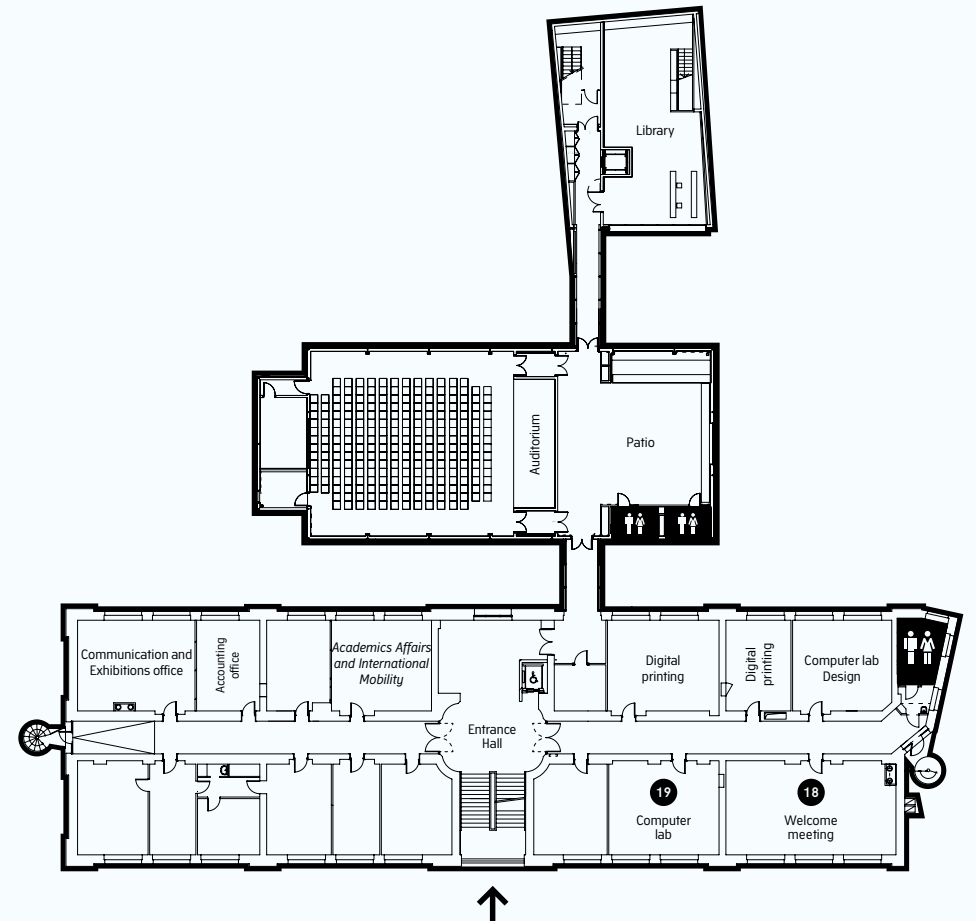


Strasbourg Visual Arts Campus – Main building

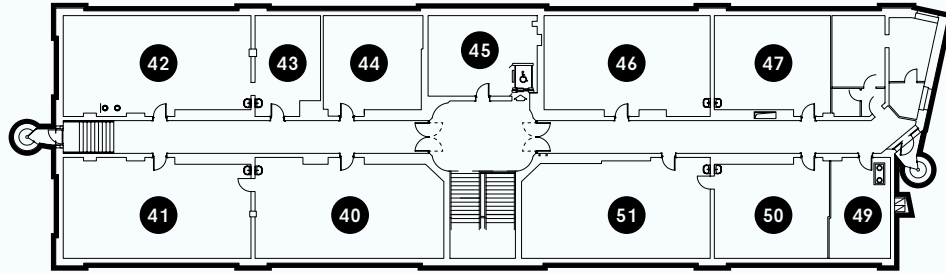
Workshop floor



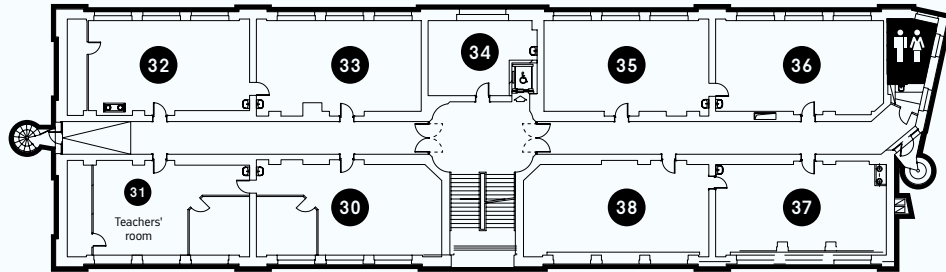
Ground floor



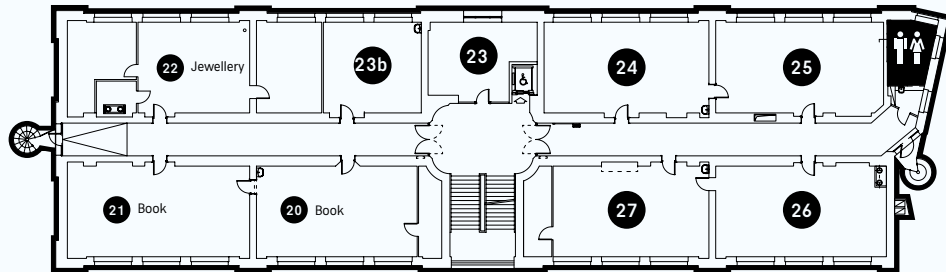
Third floor



Second floor

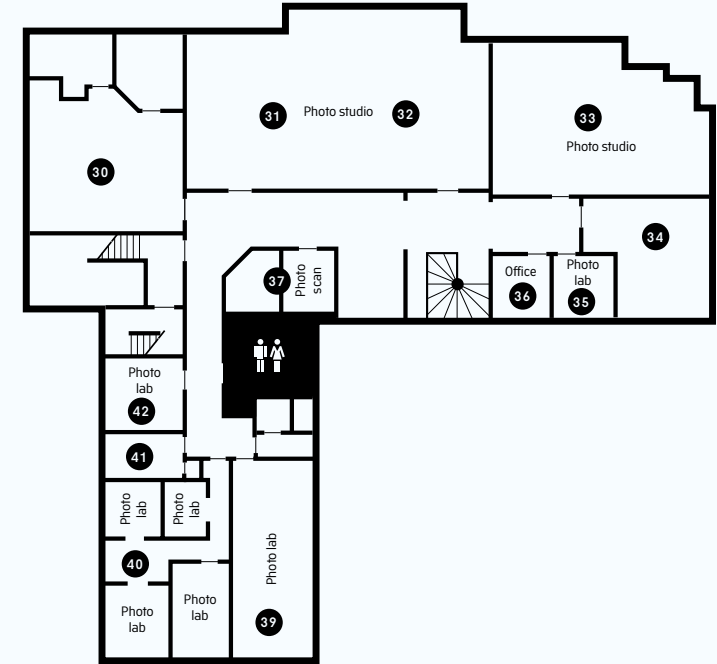


First floor

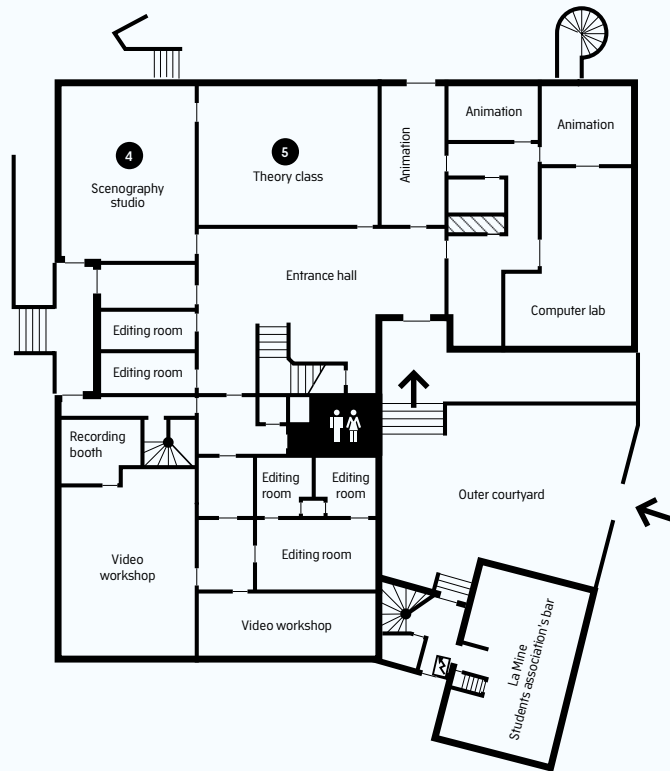


Strasbourg Visual Arts Campus – Annex

Third floor



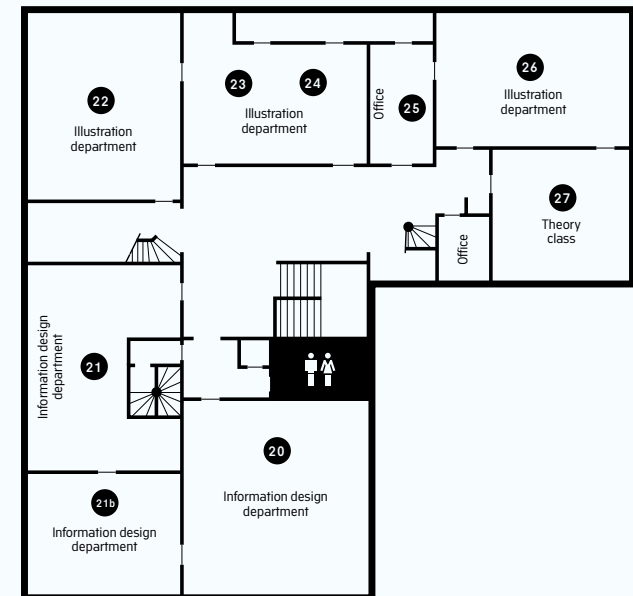
Groundfloor



First floor



Second floor



Annex 61 – 65

Key Contacts

Académie supérieure de musique of Strasbourg

Academic advisor

Gilles Oltz
T. +33 (0)3 68 98 60 72
✉ gilles.oltz@hear.fr

International mobility

✉ international@hear.fr

Academic affairs assistant

Thibaut Gindensperger
T. + 33 (0)3 68 98 60 73
✉ thibaut.gindensperger@hear.fr

Mulhouse Visual Arts Campus

International relations & Academic affairs assistant

Rosalie Behra
T. +33 (0)3 69 77 77 25
✉ rosalie.behra@hear.fr

Academic affairs coordinator

Annick Kolb
T. +33 (0)3 69 77 77 22
✉ annick.kolb@hear.fr

Academic affairs assistant

Alicia Bernardi
T. +33 (0)3 69 77 77 20
✉ alicia.bernardi@hear.fr

Strasbourg Visual Arts Campus

International relations assistant

Blandine Tello
T. +33 (0)3 69 06 37 71
✉ blandine.tello@hear.fr

Anaïs Menrath

T. +33(0)3 69 06 37 71
✉ anais.menrath@hear.fr

Academic affairs & mobility coordinator

Lucile Favet
T. +33 (0)3 69 06 37 84
✉ lucile.favet@hear.fr

Academic affairs assistant (Art dept.)

Julie Gigout
T. +33 (0)3 69 06 37 85
✉ julie.gigout@hear.fr

Academic affairs assistant (Communication dept.)

Kay Uwe
T. +33 (0)3 69 06 37 86
✉ kay-uwe.may@hear.fr

Academic affairs assistant (1st year students)

Marie-Cécile Floderer
T. +33 (0)3 69 06 37 68
✉ marie-cecile.floderer@hear.fr

A1
Basic User

A2
Basic User

B1
Independent user

Understanding



Listening

I can understand familiar words and very basic phrases concerning myself, my family and immediate concrete surroundings when people speak slowly and clearly.

I can understand phrases and the highest frequency vocabulary related to areas of most immediate personal relevance (e.g. very basic personal and family information, shopping, local area, employment). I can catch the main point in short, clear, simple messages and announcements.

I can understand the main points of clear standard speech on familiar matters regularly encountered in work, school, leisure, etc. I can understand the main point of many radio or TV programmes on current affairs or topics of personal or professional interest when the delivery is relatively slow and clear.



Reading

I can understand familiar names, words and very simple sentences, for example on notices and posters or in catalogues.

I can read very short, simple texts. I can find specific, predictable information in simple everyday material such as advertisements, prospectuses, menus and timetables and I can understand short simple personal letters.

I can deal with most situations likely to arise whilst travelling in an area where the language is spoken. I can enter unprepared into conversation on topics that are familiar, of personal interest or pertinent to everyday life (e.g. family, hobbies, work, travel and current events).



Spoken interaction

I can interact in a simple way provided the other person is prepared to repeat or rephrase things at a slower rate of speech and help me formulate what I'm trying to say. I can ask and answer simple questions in areas of immediate need or on very familiar topics.

I can communicate in simple and routine tasks requiring a simple and direct exchange of information on familiar topics and activities. I can handle very short social exchanges, even though I can't usually understand enough to keep the conversation going myself.

I can deal with most situations likely to arise whilst travelling in an area where the language is spoken. I can enter unprepared into conversation on topics that are familiar, of personal interest or pertinent to everyday life (e.g. family, hobbies, work, travel and current events).



Spoken production

I can use simple phrases and sentences to describe where I live and people I know.

I can use a series of phrases and sentences to describe in simple terms my family and other people, living conditions, my educational background and my present or most recent job.

I can connect phrases in a simple way in order to describe experiences and events, my dreams, hopes and ambitions. I can briefly give reasons and explanations for opinions and plans. I can narrate a story or relate the plot of a book or film and describe my reactions.

Writing



Writing

I can write a short, simple postcard, for example sending holiday greetings. I can fill in forms with personal details, for example entering my name, nationality and address on a hotel registration form.

I can write short, simple notes and messages. I can write a very simple personal letter, for example thanking someone for something.

I can write simple connected text on topics which are familiar or of personal interest. I can write personal letters describing experiences and impressions.

B2
Independent User

C1
Proficient User

C2
Proficient User

I can understand extended speech and lectures and follow even complex lines of argument provided the topic is reasonably familiar. I can understand most TV news and current affairs programmes. I can understand the majority of films in standard dialect.

I can understand extended speech even when it is not clearly structured and when relationships are only implied and not signalled explicitly. I can understand television programmes and films without too much effort.

I have no difficulty in understanding any kind of spoken language, whether live or broadcast, even when delivered at fast native speed, provided I have sometime to get familiar with the accent.

I can interact with a degree of fluency and spontaneity that makes regular interaction with native speakers quite possible. I can take an active part in discussion in familiar contexts, accounting for and sustaining my views.

I can express myself fluently and spontaneously without much obvious searching for expressions. I can use language flexibly and effectively for social and professional purposes. I can formulate ideas and opinions with precision and relate my contribution

I can read with ease virtually all forms of the written language, including abstract, structurally or linguistically complex texts such as manuals, specialised articles and literary works.

I can interact with a degree of fluency and spontaneity that makes regular interaction with native speakers quite possible. I can take an active part in discussion in familiar contexts, accounting for and sustaining my views.

I can express myself fluently and spontaneously without much obvious searching for expressions. I can use language flexibly and effectively for social and professional purposes. I can formulate ideas and opinions with precision and relate my contribution skilfully to those of other speakers.

I can take part effortlessly in any conversation or discussion and have a good familiarity with idiomatic expressions and colloquialisms. I can express myself fluently and convey finer shades of meaning precisely. If I do have a problem I can backtrack and restructure around the difficulty so smoothly that other people are hardly aware of it.

I can present clear, detailed descriptions on a wide range of subjects related to my field of interest. I can explain a viewpoint on a topical issue giving the advantages and disadvantages of various options.

I can present clear, detailed descriptions of complex subjects integrating sub-themes, developing particular points and rounding off with an appropriate conclusion.

I can present a clear, smoothly-flowing description or argument in a style appropriate to the context and with an effective logical structure which helps the recipient to notice and remember significant points.

I can write clear, detailed text on a wide range of subjects related to my interests. I can write an essay or report, passing on information or giving reasons in support of or against a particular point of view. I can write letters highlighting the personal significance of events and experiences.

I can express myself in clear, well-structured text, expressing points of view at some length. I can write about complex subjects in a letter, an essay or a report, underlining what I consider to be the salient issues. I can select a style appropriate to the reader in mind.

I can write clear, smoothly-flowing text in an appropriate style. I can write complex letters, reports or articles which present a case with an effective logical structure which helps the recipient to notice and remember significant points. I can write summaries and reviews of professional or literary works.

Common European Framework Glossary

French	English
1 ^{er} cycle	Bachelor
2 ^e cycle	Master
DNA Art	National Diploma in Art (awarding a Bachelor's Degree)
DNSEP Master	National Higher Degree in Visual Expression (awarding a Master's degree)
Atelier	Specialisation
Groupe pédagogique	Workgroup
Option	Department
Atelier technique	Technical Workshop
Bilan/Eval(uation)	Final oral presentation
Guide de l'étudiant	French Student Guide
Site	Campus : as in Mulhouse or Strasbourg Visual Arts Campus

Useful weblinks

HEAR

- official website www.hear.fr
- official facebook page [f](https://www.facebook.com/HEAR.fr) HEAR.fr
- Student association Lalala (Mulhouse) facebook page [f](https://www.facebook.com/Association-LALALA-Ecole-supérieure-d'Art-Le-Quai-Mulhouse) Association – LALALA-Ecole-supérieure-d'Art-Le-Quai-Mulhouse
- Student association La Mine (Strasbourg) facebook page [f](https://www.facebook.com/La-Mine-608731995893489) La-Mine-608731995893489
- Students facebook group (Strasbourg) [f](https://www.facebook.com/groups/17900809592) groups/17,900,809,592
- Students facebook group (Mulhouse) [f](https://www.facebook.com/groups/27894113420) groups/27,894,113,420
 - Students facebook group (Académie)
 - [f](https://www.facebook.com/groups/671270896253003) groups/671,270,896,253,003

Student life

- Carte Culture www.carte-culture.org
- Sport Unistra www.sport.unistra.fr
- Étudiants Strasbourg www.etudiants.strasbourg.eu
- Jeunes Ambassadeurs d'Alsace www.jeunes-ambassadeurs-alsace.com

Tourist information

- Alsace www.tourisme-alsace.com
- Mulhouse www.tourisme-mulhouse.com
- Strasbourg www.otstrasbourg.fr
- EuroCity Strasbourg www.en.strasbourg.eu

Public transport

- Mulhouse – Solea www.solea.info
- Strasbourg – CTS www.cts-strasbourg.eu

of Reference for Languages

Bicycle

- Mulhouse — Velocité www.velocite.mulhouse.fr
- Strasbourg — Velhop www.velhop.strasbourg.eu
- Velo and Strasbourg www.velolandstrasbourg.fr

Airport

- Strasbourg www.strasbourg.aeroport.fr
- Mulhouse – Basel – Freiburg www.euroairport.com
- Paris www.aeroportsdeparis.fr

Train

- National — Voyages SNCF www.voyages-sncf.com
- Regional – Ter SNCF www.ter.sncf.com
- SNCF services www.gares-en-mouvement.com
- German group ticket – DB www.bahn.de

Bus

- Just landed www.justlanded.fr
- Eurolines www.eurolines.fr (Europe)
- Flixbus www.flixbus.fr (Europe)
- Megabus freu.megabus.com/Default.aspx (Europe)
- MeinFernBus www.meinfernbus.de (Germany)

Housing

Student offer:

- Adele www.adele.org
- Crous-Mulhouse www.clous-mulhouse.cnous.fr
- Crous-Strasbourg www.crous-strasbourg.fr
- Le Club Etudiant www.leclubetudiant.com
- MGEL logement www.mgellogement.fr
- Relais Étudiant/Logement www.relais-etudiants.com
- Lokaviz www.lokaviz.fr

Flatshare:

- Appartager www.appartager.com
- Colocation www.colocation.fr
- Colocoit www.colocoit.com
- La Carte des Coloc-Strasbourg www.lacartedescolocs.fr
- La Carte des Coloc-Mulhouse www.lacartedescolocs.fr
- Recherche Colocation www.recherche-colocation.com

General offer:

- Immo Region www.immoregion.fr
- Le bon coin www.leboncoin.fr
- Le coin de limmo www.lecoindelimmo.com/
- Top Annonces www.topannonces.fr

Phone

- Tous les forfaits www.touslesforfaits.fr
- Le bon forfait www.lebonforfait.fr
- B-and-you www.b-and-you.fr
- SFR www.sfr.fr
- Sosh www.sosh.fr
- Virgin Mobile www.virginmobile.fr

Legal information

- Public Service www.service-public.fr
- Entry Informations www.diplomatie.gouv.fr
 - Préfecture — Strasbourg www.bas-rhin.pref.gouv.fr
- Préfecture — Mulhouse www.haut-rhin.gouv.fr
- CAF www.caf.fr

French Class

- SPIRAL – Strasbourg www.spiral.unistra.fr
- CLAM – Mulhouse www.clam.uha.fr
- IIEF www.iief.unistra.fr
- ESN - Strasbourg www.esn-strasbourg.eu
- Université Populaire www.u-populaire-europeenne.com

Shopping

- Le bon coin www.leboncoin.fr
- Mulhouse food market agenda www.mulhouse.fr
- Strasbourg food market agenda www.marches-strasbourg.fr

Still have questions, don't hesitate to pass by our office.

Here are the opening days and hours:

Académie Supérieure de Musique Mulhouse Visual Arts Campus

Visiting days and hours

Thibaut Gindensperger:

Monday to Friday from 9 am to 1 pm and from 2 pm to 5 pm.

Visiting days and hours

Rosalie Behra:

Tuesday from 2 pm to 5 pm and Thursday from 9 am to noon.

Strasbourg Visual Arts Campus

Visiting days and hours

Blandine Tello:

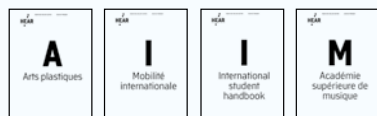
Mon. and Tue. from 2 pm to 5 pm

Anais Menrath:

Thu. and Fri. from 2 pm to 5 pm.

Or send us an email: [✉ international@hear.fr](mailto:international@hear.fr)

**Students handbooks
of Haute école des arts du Rhin :**



Responsable de la publication

David Cascaro

Impression

Printot-ixo, novembre 2017

Réalisation

Rosalie Behra, Lucile Favet,
Anais Menrath, Blandine Tello

Papiers

Couverture : 240 g/m2 popset Infra Violet
Intérieur : 80 g/m2 popset Bleuet

Mise en page

Colline Guinchart

Caractère

Police Academy Sans Regular et Bold

La Haute école des arts du Rhin est un établissement public de coopération culturelle, sous tutelle pédagogique du ministère de la Culture et de la Communication. Ses membres fondateurs et ses principaux contributeurs sont : l'État – ministère de la Culture et de la Communication, la ville et l'Eurométropole de Strasbourg, la ville de Mulhouse. Elle reçoit le soutien de la région Grand Est.



Erasmus+

