

International student handbook

January 2026

Introduction

Thank you for your interest in the Visual Arts or Music educational programmes offered by the Haute École des Arts du Rhin – HEAR. This guide is designed for current and prospective international students. It offers useful information about studying at HEAR, settling in France and living in both Mulhouse and Strasbourg cities. The Academic Affairs and International Mobility Office is in charge of counselling all students. Should you have any questions, please don't hesitate to contact us at ✉ international@hear.fr. We wish you a pleasant reading of this guide and look forward to seeing you soon at HEAR!

How to use this guide

You can access all the hyperlinks and email addresses on the online version of the International Student Handbook on the HEAR website: www.hear.fr/guide-des-etudes/

Content

4 HEAR at a glance

- 4 History & key figures
- 5 Key contacts
- 6 Addresses, opening hours & directions
- 7 In and around Alsace region

8 Academic information

- 8 Semester dates
- 9 Overview of educational programmes
- 9 French classes for HEAR students
- 10 Theoretical Visual Arts classes
- 10 It happens in English

11 Educational programmes

- 11 Académie supérieure de musique
of Strasbourg
- 14 Mulhouse Visual Arts Campus
- 15 Strasbourg Visual Arts Campus
- 19 Visual Arts workshops

20 How to apply

- 20 Incoming exchange student
- 21 Admission at HEAR as a graduate student

23 Prepare your stay

- 23 Legal entry requirements
- 24 Budget
- 24 Documents we advise you
to bring with you
- 25 Arrival
- 25 Housing

28 Settling in France

- 28 Insurances
- 30 Healthcare
- 31 Bank
- 31 Phone
- 32 Emergencies

33 Student life

- 33 Transport
- 34 Shopping guide
- 35 Professional experience in France
- 36 Student community and university services
- 38 Going out
- 39 Local cultural information

40 Your studies at HEAR

- 40 Practical information
- 42 Exchange students
- 44 Regulation and safety

46 Learning French

48 Events not to be missed

- 48 ... at HEAR
- 49 ... in Alsace

50 Maps

- 50 Where is HEAR?
- 51 Académie supérieure de musique
- 52 Mulhouse Visual Arts Campus
- 53 Strasbourg Visual Arts Campus
- 54 Cité de la musique et de la danse
- 58 Mulhouse Visual Arts Campus
- 59 Strasbourg Visual Arts Campus –
Main building
- 62 Strasbourg Visual Arts Campus
– Annex

67 Annex

- 68 Glossary
- 68 Recording
- 69 CEFRL Self-Assessment grid
- 71 Artistic statement
- 72 Letter of motivation skeleton
- 73 Useful weblinks

HEAR at a glance 4-7

History & key figures

History

HEAR was created in 2011 by merging three higher education institutions in Alsace:

- The Académie supérieure de musique of Strasbourg stemmed from the Strasbourg Conservatory created in 1855.
- The Mulhouse Ecole supérieure d'art, founded in 1825 by the Industrial Society of Mulhouse as a drawing school focused on the textile industry, which then became the Mulhouse municipal school of Fine Arts in 1945.
- The Strasbourg Ecole supérieure des arts décoratifs founded by the city of Strasbourg in 1892 as a professional school of Applied Arts, offering a vast choice of workshops (joinery/ carpentry, metalwork, ceramics, bookbinding, lithography and embroidery).

Key figures

3 campuses

Over 185 teachers
More than 780 students

Students from more than 30 countries
More than 100 international partner institutions
A total area of 25,000 m²



Strasbourg Visual
Arts Campus
11,600 m²



Mulhouse Visual
Arts Campus
4,500 m²



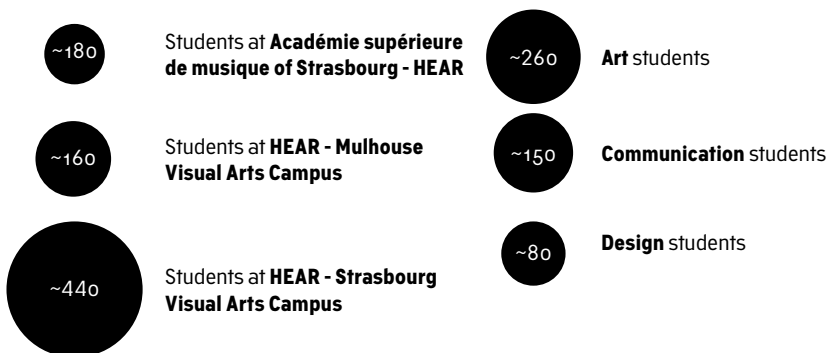
Académie supérieure de
musique of Strasbourg
9,000 m²



Manufacture des tabacs
of Strasbourg
4,320 m²



La Chaufferie
Gallery of HEAR
130 m²



Key contacts

Académie supérieure de musique of Strasbourg

International mobility contact

Iván Solano Ariza
T. + 33 (0)3 68 98 72
✉ ivan.solano@hear.fr

International mobility assistant

Perrine Maxant-Leplay
T. + 33 (0)3 68 98 67 74
✉ perrine.maxant-leplay@hear.fr

Mulhouse Visual Arts Campus

International relations officer & academic affairs

Sarah Gauthier
T. +33 (0)3 69 76 61 13
✉ sarah.gauthier@hear.fr
✉ international@hear.fr

Strasbourg Visual Arts Campus

Student mobility officer

Anais Menrath
T. +33(0)3 69 06 37 71
✉ international@hear.fr

Academic affairs coordinator

Chloé Nicolas
T. +33 (0)3 69 06 37 84
✉ chloe.nicolas@hear.fr

Academic affairs assistant (Art dept.)

Julie Gigout
T. +33 (0)3 69 06 37 85
✉ julie.gigout@hear.fr

Academic affairs assistant (Communication dept.)

Kay-Uwe May
T. +33 (0)3 69 06 37 86
✉ kay-uwe.may@hear.fr

Academic affairs assistant (1st year students)

Marie-Cécile Floderer
T. +33 (0)3 69 06 37 68
✉ marie-cecile.floderer@hear.fr

Addresses, opening hours & directions

Addresses

Académie supérieure de musique of Strasbourg

1, place Dauphine
67000 Strasbourg
FRANCE

Mulhouse Visual Arts Campus

3, quai des Pêcheurs
68200 Mulhouse
FRANCE

Strasbourg Visual Arts Campus

1, rue de l'Académie
CS10032
67082 Strasbourg cedex
FRANCE

Opening hours during the academic year

Académie supérieure de musique of Strasbourg

Monday to Friday 8 am – 10 pm
Saturday 8 am – 8 pm

Mulhouse Visual Arts Campus

Monday – Thursday
8:15 am – 8:45 pm
Friday 8:15 am – 7:30 pm

Strasbourg Visual Arts Campus

Monday – Thursday
7.30 am – 9.30 pm
Friday 7.30 am – 7 pm

Directions*

Académie supérieure de musique of Strasbourg

From the train station
Gare Centrale take tram A towards
Illkirch Lixenbul
or
tram D towards *Aristide Briand*
and get off at station *Étoile*
Bourse.

Mulhouse Visual Arts Campus

From the train station *Gare*
Centrale Take tram 3 towards
Lutterbach,
or
tram-train towards *Thann* exit at
Tour Nessel.

Strasbourg Visual Arts Campus

From the train station *Gare*
Centrale take tram C and exit at
station *Gallia*,
or
from *Gare Centrale* take bus 10
and exit at station *Saint Guillaume*.

**See maps in the Annex of this guide.*

In and around Alsace region

City of Mulhouse

Often referred to as the 'French Manchester' for its rich industrial heritage, Mulhouse is home to major technical and textile museums, including the world-renowned Musée de l'impression sur étoffes. A city of creativity, it cultivates a thriving artistic environment where cultural institutions, open-air street art and artists' third places support emerging practices and collective projects. In this cradle of the textile industry, the HEAR's Textile Design course continues this legacy by training designers who reinvent contemporary materials

and patterns. Mulhouse is located 30 km away from Basel in Switzerland, another city with a vibrant cultural and student life. Mulhouse is 100 km away from Strasbourg; the train ride takes about 50 minutes.

Official website of the City of Mulhouse:
www.mulhouse.fr

Tourist Information: 1, Avenue Robert Schuman
www.tourisme-mulhouse.com

City of Strasbourg

Strasbourg is a major city in Eastern France, as well as the official seat of various European institutions such as the European Parliament. The city is located very close to the German border and is the 7th largest city in France. Strasbourg's historic city centre, the Grande Île, was classified a World Heritage site by UNESCO in 1988.

Strasbourg is home to more than 50,000 students. Official website of the City of Strasbourg:
www.en.strasbourg.eu

Tourist Information: Place de la Cathédrale
www.visitstrasbourg.fr

Alsace region

Strasbourg and Mulhouse are both located in the Alsace region, famous for its high concentration of picturesque villages, churches and castles. Alsace is also well-known for its vineyards, its Christmas markets, its gastronomy and the Vosges Mountains with thick lush green forests and beautiful lakes.

Alsace has a semi-continental climate with cold and dry winters and hot summers. You could also explore the nearby cities by bike, train or car to discover the Alsatian countryside. You can also participate in hikes organized by the [SUAPS](#) (Strasbourg) or the [UHA](#) (Mulhouse).

Tourist Information: www.visit.alsace

Around Alsace

Alsace shares its border with Germany and Switzerland. You can easily reach the following cities which present a great cultural interest within a few hours: Metz, Nancy, Karlsruhe, Stuttgart, Freiburg, Basel, and Zürich.

For information on how to travel in and around Alsace, please check on [page 33](#).

Academic information

8 – 10

Semester dates

There is no class during public holiday and most of the stores are usually closed.
The exact semester dates are published on both *Guide des études* Music and Visual Arts.
Mulhouse and Strasbourg cities are in "Zone B" of the French school zones.
More information on: www.vacances-scolaires.education

Académie supérieure de musique of Strasbourg

**Academic year: Beginning of September -
Beginning of July**

Fall vacation: End of October

Christmas vacation: End of December

Winter vacation: End of February

Spring vacation: End of April

Public holiday: November 1st and 11th; May 1st
and 8th

Visual Arts campuses Mulhouse and Strasbourg

Academic year: End of September - End of May

Fall semester: End of September - End of January

Spring semester: End of January - End of May

Christmas vacation: End of December

Winter vacation: End of February

Spring vacation: End of April

Public holiday: November 1st and 11th; May 1st
and 8th

Overview of educational programmes

Académie supérieure de musique

- *Accompagnement au piano* | Piano accompaniment
- *Musique de chambre* (Master uniquement) | Chamber music (Master only)
- *Bois* | Woodwind
- *Claviers* | Keyboards
- *Cordes* | Strings
- *Composition*
- *Cuivres* | Brass
- *Chefs d'ensembles* | Conducting
- *Jazz et musiques improvisées* | Jazz and improvised music
- *Musique ancienne* | Early music
- *Percussion* | Percussion
- *Voix* | Voice

Mulhouse Visual Arts Campus

Art department

- *Le Plateau* | Mixed media

Textile Design department

Strasbourg Visual Arts Campus

Art department

- *Hors-Format* | Performance, media-arts
- *La Fabrique* | Sculpture & installation
- *Peinture(s)* | Painting

Enquêter, Raconter

Scenography department

Art-Object department

- *Bijou* | Jewellery
- *Bois* | Wood
- *Terre/Céramique* | Clay/Ceramic
- *Livre* | Book
- *Métal* | Metal
- *Verre* | Glass

Communication department

- *Communication graphique* | Graphic Design
- *Didactique Visuelle* | Information Design
- Illustration

Design

French classes for HEAR students

Most classes at HEAR are held in French. Improving your French skills will allow you to make the most of your study period at HEAR and your stay in France in general. Although French language classes are offered to our international students during the semester, we still strongly recommend a good preparation before your arrival.

French classes are mandatory for all international non francophone Music students, regardless of their level, and for Visual Arts students whose level is estimated at B1 and below on the CEFRL Self-assessment grid (see the Annex).

Mulhouse Visual Arts Campus:

Tests and classes will take place in the Pôle FORCE language center.

Pôle FORCE 6, rue des Frères Lumière

www.learning-center.uha.fr/opac/do

Strasbourg Visual Arts Campus and Académie supérieure de musique of Strasbourg

A mandatory test of French proficiency level will take place at the beginning of each semester. The class focuses on everyday life communication and is based on practical situations. This class also offers a specific support for Music and Visual

Arts students with dedicated time related to arts training. From understanding French contracts, to writing a French CV, a Master thesis, a work statement, or preparing for the *bilan* (final presentation), the teacher will help you develop

your language skills, and offer adequate tools related to your own field.

Teacher: ✉ soufia.souai@hear.fr

Theoretical Visual Arts classes

Theoretical classes at HEAR are taught by specialised faculty members. These classes nourish the students' entire curriculum, allowing them to situate and maintain a critical distance with their artistic productions.

These classes offer a varied approach in historical, thematic, transversal contents and in disciplines ranging from semiotics, aesthetics, history of modern and contemporary art, just like specific History based on mediums (photography, graphics, design, typography...). Most of the classes are taught in French only. However some theory teachers are fluent in English and accept essays to be written in English.

For more information, please contact:

Mulhouse Visual Arts campus

✉ servin.bergeret@hear.fr

Strasbourg Visual Arts campus

✉ anne.laforet@hear.fr

Strasbourg Music campus

These theoretical classes are also open to music students. Please contact the Academic affairs service on the Strasbourg visual arts campus:

✉ chloe.nicolas@hear.fr

It happens in English

Classes in English can be found in every department. All teachers are artists and have a thorough knowledge of the French and international art world. Some teachers follow the student's work during *Rendez-vous individuels* (individual appointments). These are not English classes but moments for students to acquire technical, practical and theoretical knowledge in their specific fields of work in English, giving their work an opening to international opportunities.

In class, students get to experience different teaching methods used around the world, most of these focused on openness, co-teaching and collaborations, allowing students to gain the necessary self-knowledge and confidence to share their work and ideas with ease and enthusiasm. In a trusting and non-judging environment, all communication happens in English, regardless of ability or level.

Mulhouse Visual Arts classes

✉ mirjam.spolder@hear.fr

✉ zoe.inch@hear.fr

Strasbourg Visual Arts classes

✉ alexandra.david@hear.fr

✉ sarah.sandler@hear.fr

Strasbourg Music classes

Most classes are held in French, but some teachers may give classes in English.

✉ emmanuel.sejourne@hear.fr (percussion)

✉ philippe.geiss@hear.fr (saxophone)

✉ amy.lin@hear.fr (piano)

Educational programmes

11 – 19

Académie supérieure de musique of Strasbourg

From early music to classical, contemporary or jazz, the Académie supérieure de musique of Strasbourg prepares its students for world-class careers in music performance, composition and teaching. Students learn with internationally renowned professors, performers and composers,

and participate in numerous master classes with eminent guest artists throughout the year.

 **You can download the music options' leaflet:**
www.hear.fr/la-hear/publications-hear

Musical Dominants

The Académie supérieure de musique of Strasbourg comprises 10 music departments and offers more than 40 music majors, including

instruments that are rare even amongst French institutions, such as the accordion, ondes Martenot, and cimbalom.

Accompagnement au piano |
Piano accompagnement
Ongoing recruitment

Bois | Woodwind
Basson | French bassoon
Jean-Christophe Dassonville

Clarinette | Clarinet
Jean-Marc Foltz
Jérôme Schmitt (interim)
Sébastien Koebel

Fagott | Bassoon
Rui Lopes

Flûte traversière | Flute
Mario Caroli
Sandrine François

Hautbois | Oboe
Samuel Retaillaud (interim)
Christian Schmitt

Saxophone
Philippe Geiss

Claviers | Keyboards
Accordéon | Accordion
Marie-Andrée Jøerger

Ondes Martenot
Christine Ott

Orgue | Organ
Francis Jacob
Johan Vexo

Piano
Wilhem Latchoumia
Amy Lin
Michèle Renoul

Pianoforte
Michel Gaechter

**Composition
et musiques électroniques |
Composition and electronic
music**

Composition instrumentale,
vocale et mixte
Electroacoustic and real-time
composition
Daniel d'Adamo
Iván Solano Ariza

Composition électroacoustique
et temps réel
Composition of electronic music
and real-time
Tom Mays

Cordes | Strings

Alto | Viola
Benjamin Boura

Contrebasse | Double bass
Thomas Kaufman

Guitare classique
Classical guitar
Alexis Muzurakis
Susana Prieto

Harpe | Harp
Mélanie Laurent
Anne Vonau-Spannagel

Violon | Violin
Charlotte Juillard
Hedy Kerpitchian-Garzia
Philippe Lindecker
Ana Reverdito-Haas

Violoncelle | Cello
Fabien Genthialon
Payam Thagadosi

Cuivres | Brass

Bass Trombone
Brian Damide

Cor | French horn
Alban Beunache
Jean-Philippe Chavey
Sébastien Lentz

Euphonium
Sébastien Stein

Trombone
Nicolas Moutier

Trompette | Trumpet
Patrick Carceller
Vincent Gillig

Tuba
Micaël Cortone d'Amore

**Direction d'ensemble |
Conducting**
Chef d'ensembles vocaux
Choir conducting
Jean-Philippe Billmann

Direction d'orchestre
Orchestral conducting
Miguel Etchegoncelay

Direction d'orchestre
et d'ensemble contemporains
(Master uniquement)
Contemporary orchestral
conducting (Master only)
Jean-Philippe Wurtz

**Jazz et musiques improvisées |
Jazz and improvised music**
Batterie | Drum kit
Luc Isenmann

Chant | Voice
Valérie Graschaire-Agulhon

Contrebasse | Double bass
Jean-Daniel Hégé

Guitare | Guitar
Benjamin Velle

Piano jazz
Paul Staïcu

Saxophone
Michaël Alizon
Philippe Aubry

Musique ancienne | Early music
Chant baroque | Baroque voice
Monika Mauch

Clavecin | Harpsichord
Benjamin Steens
Adèle Gornet

Clavecin historique
(Master uniquement) | Keyboards
in ancient music (Master only)
Benjamin Steens
Adèle Gornet

Flûte à bec | Recorder
Patrick Blanc
Renata Duarte

Hautbois baroque | Baroque oboe
Renata Duarte

Luth et guitare baroque
Lute and baroque guitar
Parsival Castro

Traverso | Baroque flute
Patrick Blanc

Viole de gambe
Viola de gamba
Franziska Finckh

Violon baroque | Baroque Violin
Stéphanie Pfister-Reymann

Violoncelle baroque
Baroque Cello
Kévin Bourdat

**Musique de chambre
Chamber music**

Alain Acabo
Benjamin Boura
Craig Goodman
Samika Honda

Percussion | Percussion

Cymbalum | Cimbalom
Luigi Gaggero


Percussion
Stephan Fougeroux
Denis Riedinger
Emmanuel Séjourné

Voix | Voice
Chant | Singing
Mélanie Moussay

Specific organisation of studies

The Académie supérieure de musique of Strasbourg offers the following diplomas and degrees: a joint Bachelor degree – *Diplôme national supérieur professionnel de musicien* (DNSPM)/*Licence Composition et interprétation musicale* (CIM), a Master *Composition et interprétation musicale*, a *Diplôme d'État* in pedagogy (DE), and a Doctorate (Ph.D.) with the Hochschule für Musik in Freiburg and the University of Strasbourg. The teaching programme emphasises on the students' daily instrumental practice which allows them to progress with the help of nationally and internationally renowned musicians and faculty members.

The curricula take into account the diversity of our students' profiles through a large selection of over 50 complementary courses. Students are encouraged to engage in other aesthetic and interdisciplinary fields in the Académie's lively artistic, economic and cultural environment.

 **More information about the organisation of studies:** www.hear.fr/musique/pedagogie-musique


Professional experience and career opportunities

The Académie supérieure de musique of Strasbourg prepares students for a career as a musician, artist and teacher. The Symphony Orchestra of the Académie and Conservatoire of Strasbourg, along with the Contemporary Music Ensemble and Concert Band, give students the opportunity to participate and learn in a professional environment and perform the master works of the repertoire. Under the direction of esteemed conductors,

each ensemble has two to three sessions a year that culminate in concerts in the auditorium of the Cité de la musique et de la danse. Chamber music is an essential part of the Académie degrees. Professors assist students with all facets of their chamber music, helping them to gain a profound knowledge of the repertoire as well as performance and practice techniques. Their work is showcased in public concerts at the end of each trimester.

Mulhouse Visual Arts Campus

This detailed description will help you choose your *option* (department)
or/and *groupe pédagogique* (workgroup) at HEAR.

 **You can download the leaflet of Visual Arts options:**
www.hear.fr/la-hear/publications-hear

Art – Le Plateau

The Art department is marked by the presence of an active sound art workshop and programme, Sonic and Sound Spaces and thus displays a particular interest in the question of the propagation of art in space in its material and immaterial dimensions. The department articulates different teachings around a common project. Teachers also follow and encourage individual projects of each student.

No technical expertise or any particular medium is prioritised. Sound Arts, Painting, Volume, Photography, Video, Intermedia, Set Design and Exhibition Practices have a common concern: experimentation with space as an artistic concern.

Teachers:

✉ ivan.fayard@hear.fr

✉ anne.immele@hear.fr

Textile Design

In Textile Design, issues related to contemporary art and design are explored by creating artworks or practical objects related to new lifestyles. The section offers generalised training based on the acquisition of fundamental techniques (weaving, stitching, printing, tinting) that supplement courses in the history of art and design. Throughout their course, students enrich their practice in workshops, by experimenting with complementary techniques (engraving, screen printing, wood, photography, computing and ceramics). This training encourages thought about use, methods, techniques and cultures in

which artistic production is also viewed in terms of economic, aesthetic, political and ethical issues. Students learn the basic principles of textile design through a rational approach to materials and techniques (weaving, stitching, awareness of colour and tinting, printing, practice of textile design, etc.). Through numerous partnerships with companies, different fields of exploration are dealt with in art, design, craft and industry.

Teacher:

✉ yvan.etienne@hear.fr

✉ christelle.ledean@hear.fr

Strasbourg Visual Arts Campus

📄 You can download the leaflet of Visual Arts option:
www.hear.fr/la-hear/publications-hear

Art

Workgroups of the Art Department of the Haute École des Arts du Rhin (HEAR) are: La Fabrique, Farmteam/Storytellers, Hors-Format, No Name, Peinture(s) in Strasbourg and Le Plateau in Mulhouse. Artists and theoreticians develop different approaches to art supported by the thoroughgoing practice of various mediums, techniques and materials. This range of possibilities enables the invention of open and personalised experimental domains in which students organise their courses according to their practice and their project. Alongside this time of experimentation and artistic research, a common core (technical learning, workshops, platforms, transversal courses, etc.) enriches the student's project. In addition, theoretical courses incorporating a wide variety of approaches (historical, thematic, transversal) constitute an educational programme in their own right that feeds the whole of the student's curriculum.

• Hors-Format | Performance, media-arts •

The Hors-Format workgroup consists of artist-teachers, theoreticians, guest artists and students. Together they analyse and construct artistic events in order to experiment with ways to create, transmit and analyse instability by using time, space, image, text, sound, the body and the relationship with technology as malleable media.

Teachers:

✉ anne.laforet@hear.fr
 ✉ francisco.ruiz-de-infante@hear.fr
 ✉ marine.froeliger@hear.fr

• La Fabrique | Sculpture, installation •

At La Fabrique, sculpture may be produced in large formats. The teachers have a sculpture, moulding, drawing and photography practice and a site-specific strategy. Throughout the course, students acquire tools for the presentation, communication and dissemination of their work in order to facilitate integration into contemporary art networks.

Teacher:

✉ claire.malrieux@hear.fr
 ✉ samuel.francois@hear.fr

• Peinture(s) | Painting •

In Peinture(s), an introduction to the techniques of painting, drawing and printmaking encourages the development of a personal formal language. Peinture(s) draws its project from the paradoxical space of the studio: a place of withdrawal, work and concentration that translate the world into forms.

Teachers:

✉ emmanuelle.castellan@hear.fr
 ✉ mathieu.boisadan@hear.fr

Design

Design is a means of achieving what one sets out to do: it is the process through which we create the material, spatial, visual and sensorial environments in a world increasingly under the sway of new technologies, uncertain of its relation with materials and exposed to the perils of unrestrained globalisation. The design section examines how artistic expression crosses over the boundaries of theoretical, societal and political issues and helps students acquire a firm grasp of contemporary usages of production tools, in both industrial and artisanal applications, at a time when the digital revolution is upon us. Designers are also concerned with both the aesthetic and ethical aspects of their environment, while

adjusting to the realities imposed by economic and production constraints.

Norman Potter's observation that 'a designer works through and for other people' provides a basis for learning about the notion of context. Context is quite simply given as the preliminary step in any analysis of the realities surrounding a project. Design in the sense of considering others and their environment as integral to the project incites the designer to place him or herself within an experimental and forward-looking design sphere.

Teacher:

✉ nathalia.moutinho@hear.fr

Enquêter, Raconter

● **Enquêter | Mixed media, art & science** ●

Enquêter, teaching is designed for students receptive to the complexity of contemporary societies. By linking their personal research to the theme of the seminar 'Art, Science and Society' that is developed each year, students experiment with visual forms in order to devise and produce a collective exhibition.

Teachers:

✉ alain.della-negra@hear.fr

✉ clotilde.viannay@hear.fr

● **Raconter | Mixed media** ●

This workgroup seeks new forms of storytelling and is aimed at students who have a desire to invent stories with their visual production. Although audiovisual production is central, other media remain possible. The artistic medium is the audio-visual language.

Teacher:

✉ sandrine.israel-jost@hear.fr

✉ oh-eun.lee@hear.fr

✉ hoel.duret@hear.fr

Art-Object

The option Art-Object is situated within contemporary art oriented training and includes the Clay/Ceramic, Glass, Jewellery, Metal, Paper/Book and Wood workshops, some of which date back to the 1892 origins of the Ecole supérieure des arts décoratifs of Strasbourg. Closely related to the field of sculpture, in its current manifestation ranging from actions to installations, the notion of object goes beyond the artist's book and jewellery. Through the use of diverse materials and high-level knowhow, students discover unexpected forms and expressions and produce new aesthetic approaches.

Although attached to the workshop they chose, students share teaching modules with the other workshops. Furthermore, the other

specialisations, Art, Design and Communication, collaborate with the workshops, places of fruitful multidisciplinary encounters. Throughout their studies, students benefit from various forms of teaching: technical training, theoretical courses, language courses, individual tutorials, conferences, research workshops, seminars and workshops...A group presentation, open to the public, is offered every Thursdays.

📱 [Lexpodujeudi](#)

• Bijou | Jewellery •

Jewellery as an artistic discipline and field of experimentation is a particularity of French art schools. Rooted in the Goldsmithing Workshop, the Jewellery Workshop at HEAR borders on contemporary art and design. It is a place for acquiring and using techniques and for generating ideas related to the intrinsic qualities of the jewel and the complex evolution of body adornment. Students develop a relevant personal vision through the use of various materials and know-how. Whether an object of power or a popular Art—Object, the jewel is a small zone of materiality and jewellery is a portable art, situated on the body. See the Facebook page of the Jewellery Workshop: [f HEARBijou](#)

Teachers:

✉ florence.lehmann@hear.fr

✉ sophie.hanagarth@hear.fr

• Bois | Wood •

The Wood Workshop involves a technical approach to information about materials and their implementation but also a more conceptual approach related to the specific nature of the material with regard to the living world and to its cultural role. Such training is designed to provide students with the necessary elements in order to give them real autonomy and ensure their future independence as authors and artists. Although the main material employed is wood in all its aspects, other materials and other means of expression are developed, without restriction, in relation to the various projects undertaken by students.

Teacher:

✉ vincent.chevillon@hear.fr

• Livre | Paper, Book •

The Book Workshop, which has arisen from a culture of book binding, is a place of research and experimentation and approaches the book as an object encoded by its historical uses and which is in a perpetual state of evolution. In its most recent manifestation, this approach is embodied in the concept of the 'artist's book' which is rooted in diverse twentieth century experimental practices. The workshop combines theory and practice and aims to train students to understand the book-object as a medium in which form and content

maintain an unstable but open relationship, especially in the era of digital mutation.

Teacher:

✉ ju-young.kim@hear.fr

• Métal | Metal •

The Metal Workshop explores the concept of assemblage, static and dynamic experimental structures and all formal systems induced by metals and their physical properties. The workshop is based on free experimentation with a variety of materials and guides each student in a process that encourages openness and curiosity.

Teacher:

✉ vincent.chevillon@hear.fr

• Terre/Céramique | Clay/Ceramic •

As an outstanding feature of French art schools, the Clay/Ceramic Workshop explores the medium of clay in terms of its uses, its history and its role in contemporary art practices. Such training facilitates approaches to the articulation of form and meaning in relation to sculpture, image and space. Clay and its derivatives are explored and manipulated in all forms (liquid, solid, unfired, fired) and at all temperatures. Using raw materials (oxides and minerals), students develop a personal formal repertoire to be employed in their projects.

Teacher:

✉ lucile.uhlrich@hear.fr

• Verre | Glass •

The Glass Workshop in Strasbourg is unique in the field of French art schools. It enables the development of work through technical and theoretical approaches to understanding the origins and role of glass in the field of contemporary art, with critical distance. Students analyse and progress further in their work by using glass, as if it were any other medium, in a unique functional or poetic plastic production. Direct experimentation is the driving force behind each student's personal project. Weekly group discussions are a forum for monitoring projects and production. See the website of the Glass Workshop: atelierverre.wordpress.com

Teacher:

✉ yeun-kyung.kim@hear.fr

Communication

The Communication department consists of three specialisations: Graphic Design, Information Design and Illustration.

Each specialisation develops its specific trainings in full autonomy, but they all share the same goals:

- Attentively read the world of visual signs around us and its underlying rhetorical processes
- Understand what gives power to images and texts, and how they interact;
- Develop the works of authors engaged in artistic and graphic practices that are fully anchored in reality;
- Graphically answer contemporary political and sociological questions.

Visual Communication takes into account an order as much as its recipient. This is the methodology towards which the students are lead, step by step. Visual Communication questions the Media in its full range from paper to 'digital', from book to audiovisual. These teachings enhance the ethical and aesthetic stakes of these tools, their impact on the subject as much as the know-how that they require.

• Communication graphique | Graphic Design •

This specialisation sets out to encourage the emergence of unique personalities in Graphic Design and gives authors a broad grounding in professions relating to visual creation, in the widest sense of the term. The teaching will help students find their position within this constantly developing field through a highly contemporary focus, while gaining insight into the history and the theoretical issues of the subject and its related artistic fields. The course will bring a speculative, reflective, prospective and critical vision, inciting students to experiment and to examine transversal practices, such as publishing, photography, animation, video, writing and digital and to develop their critical capabilities and autonomy. The Graphic Design specialisation is a fully integrated part of a multidisciplinary art school and encourages students to interact and collaborate with other specialisations within the school, while also encouraging them to question and use digital and social network media and tools. The specialisation is also a laboratory for exploring contemporary society against a backdrop of its social, cultural, political and artistic challenges.

comgraph.hear.fr

Teacher:

✉ jerome.saint-loubert-bie@hear.fr

• Didactique visuelle | Information Design •

HEAR's Information Design department is unique in France. This specialisation focuses on methodologies to improve the understanding, communication and transmission of specific knowledge including art mediation using Visual and Digital Arts. The course strikes a balance between actual draftsmanship and graphic design, with its processes and usages, and its technological development (production, publishing, distribution).

Contributing theoretical approaches include cognitive and learning sciences. Information Design at HEAR is therefore a cross-disciplinary practice that favours, depending on the context, intersecting approaches of the different media, languages of art mediation and forms of expression... Students can develop their talents as authors, creators sharing and participating to a critical and sensitive reading of the world, communicating a point of view, a testimony, an analysis, a staging of reality, through visual means.

www.didactiquevisuelle.hear.fr

Teacher:

✉ olivier.poncer@hear.fr

• Illustration •

The Illustration specialisation teaches the narrative image language and its relation to the text (from the implied narration of a silent image to the complementary features of image and text on a page layout). This language is complex to learn and produces paradoxically simple and accessible reading for a great majority of people. An important aspect of the training is considering the reader, which requires a certain type of humility and the riddance of all forms of self-satisfaction from the author. The specificity of the Illustration specialisation is the independent and singular copyright work, which is asked of the students (even though being an author is not something that one learns). Developing, nourishing a world and allowing it to flourish, to exist, is the perpetual challenge that the teaching staff of the Illustration specialisation offers to take up. Graphic experiments, research of graphic style, staging, script, plot, character, color are some of the key elements of the pedagogy.

Teacher:

✉ marie-luce.schaller@hear.fr

Scenography

The scenography department questions the way the issues of space and (re) presentation cross over into various fields of contemporary creation. Although the theatre remains the structural axis of the classes, students often quit conventional performance spaces in order to question and practice what, in virtual urban spaces but also in contemporary art and the museum, is an active field of theatricality.

As it is based in an art school, the teaching of scenography at HEAR is transdisciplinary, in regular interaction with other artistic and musical practices. The workshop develops authorial viewpoints that are unusual or atypical.

The graduation diploma is thus a rare opportunity to initiate projects outside the existing codes of (re) presentation and to freely experiment with issues related to space and fiction.

Teacher:

✉ jean-christophe.lanquetin@hear.fr

Visual Arts workshops

Technical workshops are accessible beyond regular class time. During the whole process an assistant will help you through the realisation of your project.

Mulhouse technical workshops

- *Sérigraphie* | Silk screen printing
- *Photographie* | Photography
- *Infographie* | Computer graphics
- *Sonic (son)* | Sound
- Video
- *Volume* | Sculpture

- *Menuiserie* | Carpentry
- Metal
- *Gravure et découpe laser* | Laser cutting and engraving

Coordinator:

✉ emilie.vialet@hear.fr

Strasbourg technical workshops

Technical Workshops

- Animation
- *Atelier léger* | Wood
- *Gravure & Lithographie*
Engraving & Lithography
- *Photographie* | Photography
- *Son* | Sound
- Video

PIF Workshops*

- *Façonnage* | Digital lab*
- *Impression* | Printing workshop*
- *Livre* | Book binding*
- *Numérique* | Digital lab*
- *Photographie* | Photography*
- *Préresse & Sérigraphie*
Prepress & silkscreen printing*

***PIF: Préresse Impression Façonnage**

These workshops and equipments are only accessible to student who have followed an initiation.

The PIF initiation aims at showing students the whole process, the technical resources and materials involved in a graphic chain. Please note that places are limited. Students will need to have an edition project in mind before registering. Find more information in the Cursus PIF brochure.

Coordinator:

✉ pierre.speich@hear.fr

Art-Objet Workshops

If you study within the Art-Object department, teachers may schedule specific initiations which will allow you to access the facilities of another specialisation. If you're not an Art-Objet student, please check with the coordinators of each specialisation for the possibility to follow an initiation.

- *Bijou* | Jewellery
- *Bois* | Wood
- *Terre/Céramique* | Clay/Ceramic
- *Livre* | Book
- *Métal* | Metal
- *Verre* | Glass

How to apply 20–21

Incoming exchange student

Partnerships between HEAR and many institutions abroad allow students to participate in an exchange programme during a semester or a whole academic year and receive credits in their school.

Exchange students pay tuition fees to their home institution, thus they do not have to pay any tuition fees at HEAR. Exchange students benefit from the same rights and are subjected to the same duties as HEAR graduate students; however they are not entitled to receive the diplomas delivered from HEAR.

Nomination

All candidates must be nominated by their home institution. We send the nomination instructions by e-mail to our partner institutions every year. If there is no partnership between our institutions please contact us at international@hear.fr

Selection

The coordinators will review applications, and students will be accepted depending on the quality of their portfolio (Visual Arts) / recording (Music) but also depending on study places available in each department, specialisation or workgroup. Results of the selection process are sent within the month after the deadline.

Application

Once nominated by their home institution, candidates will receive codes to access our application database where they can fill in their information and upload the application documents.

Language requirements

French language skills are necessary. An estimated B1 level is recommended. See section about Learning French.

Académie supérieure de musique of Strasbourg

Application documents

All in one PDF file in this order:

Page 1. CV

Page 2. Letter of motivation

Recording

Link to your recording (between 15 and 20 minutes, free program)

The audition repertoire is free of choice within the classical western repertoire and should last between 15 and 20 min.

Editing is only allowed between performances (i.e. between pieces), and the recording must be no more than six months old.

**Only one application deadline (Fall or full year):
March 15**

Visual Arts

Application documents

All in one PDF file in this order:

Page 1. CV

Page 2. Letter of motivation

Definition: 72 dpi (adapted to computer screens)

Maximum size: 5 mega octets/mega bytes

You can use an easy and free online service to reduce the size of your PDF: smallpdf.com

Portfolio

Format: Max A4, portrait or landscape

Only one application deadline: May 15th

Admission at HEAR as a graduate student

Académie supérieure de musique of Strasbourg

For admissions to the Bachelor/DNSPM (performance) programme, the candidate must have a DEM (a musical education diploma – equivalent of 'A' levels or AP's) or an equivalent foreign degree. Admissions to the Master programmes are open to candidates with a Bachelor – DNSPM or equivalent foreign degree.

Conditions, procedures and application forms available online www.hear.fr
Required French level: DELF B2

Application deadlines

Application deadline: beginning of January

Auditions date: in March-April

Tuition fees

DNSPM-Bachelor:
regular fee €~424

Master CIM:
regular fee €~378

You can find the conditions to reduced tuition fees in the *Guide des études*.

📄 **Download the guide in PDF:**

www.hear.fr/la-hear/publications-hear

For more information, please contact

✉ academie.strasbourg@hear.fr

Visual Arts

1st Year entry exam

For admissions to the 1st year entry exam you need the Baccalauréat (or equivalent highschool diploma).

French language skills are mandatory and you need to provide a proof of a B1 level in French.

The exam is structured in two phases:

- selection of the written application (portfolio, letter of intent and application form)
- interview with a jury and written examination (in French) on a theoretical subject.

Application fee €60

Admission committee

This committee is open to students having completed at least one year of higher artistic education. French language skills are mandatory and you need a proof of a B2 level in French. The admission is determined by the decision of the jury and the study places available in each specialisation or workgroup.

The admission consists of two steps:

- pre-selection of the written application
- interview with a jury from the chosen

specialisation or workgroup. In some cases this interview can take place by phone or online..

The updated application procedure will be available on the school's website www.hear.fr in January.

Application fee €61

Application deadlines

Admission committee: Mid March
1st year students: Mid March

Tuition fees

Regular fee €850; please see conditions on our website for information on reduced fee:
www.hear.fr/admissions/arts-plastiques-adm

Partial waiving of application fee on social criteria

Self-funded students who might have important financial difficulties can request a partial waiving of application fees. They have to file a specific application record before September 30th of the current academic year.

Once the file is submitted and the supporting documents are reviewed by a social worker designated by HEAR, a selection commission chaired by the Board Director or its legal representative and the two Deputy Directors or their legal representative, HEAR Administrator or its legal representative take a decision on the request.

The partial waiving of application fee will only take effect on tuition fee paid to HEAR (consequently excluding the CVEC, fees for preventive health services and any other additional contributions).

Prepare your stay 23–25 Legal entry requirements

If you are a student from the European Union and the European Economic Area (EEA), Andorra, Monaco and Switzerland, you are exempt from visa and temporary residence permit requirements. You can come to France with a valid ID card or a passport.

Visa

If you are not a national from one of the countries listed above, it will be necessary to apply for a 'long stay' visa marked 'student' (approximately €99) at the French consular services in your country of residence.

French consular services may require other documents in addition to your acceptance at

HEAR and a proof that you have sufficient financial means to live in France (approximately: €615/month).

Find detailed guidelines to get your visa on the official French diplomatic website www.diplomatie.gouv.fr

Residence permit

In some cases, students with a one-year visa do not need a temporary residence permit and must go to the OFII (Office Français de l'Immigration et de l'Intégration), the procedure is explained upon reception of the visa.

Other students must apply for a temporary residence permit at the prefecture of Strasbourg or Mulhouse.

Mulhouse: Sous-Préfecture — 2 place du G^{ral} de Gaulle, 68100 Mulhouse — www.haut-rhin.gouv.fr

Strasbourg: Préfecture — 5 place de la République, 67073 Strasbourg — www.bas-rhin.pref.gouv.fr
To apply for a temporary residence permit (approximately €80), you must submit the original and a photocopy of the following documents:

- ☐ your passport
- ☐ an enrollment certificate (*certificat de scolarité*)
- ☐ a proof of financial resources (same given for the visa application)
- ☐ a proof of residential address (*attestation d'hébergement*)
- ☐ a birth certificate
- ☐ 3 ID pictures

More information: www.service-public.fr > Étranger > Titre de séjour

Budget

Main expenses

The average monthly budget for a student is estimated between €350 and €750. It can vary between Strasbourg and Mulhouse and also depends on your personal lifestyle.

Monthly expenses:

Rent: 200–€500

Food: 100–€150

Leisure: 50–€100

Health insurance: 40€

Public transportation: 19–€27

Local prices:

1 one-way Tram/Bus ticket: 1.50–€1.70

1 monthly Tram/Bus pass: 19–€26.60

1 student meal: €3.25

1 restaurant meal: 15–€25

1 cinema ticket: 4–€7

1 concert/show/theater ticket: 6–€60

One time expenses:

French phone SIM card: €4

Bike: 40–€100

Annual housing insurance: 10–€50

Other set-up expenses

(phone + electricity, etc.): €100

Mobility Grants

Ask your home institution

If you are an exchange student, please check which grants you can apply for with the help of the International Office of your home institution.

Campus France

Depending on your home country, you can find scholarship on Campus France that could help you to finance your studies in France.

campusbourses.campusfrance.org

Documents we advise you to bring with you

☐ **Proof of liability insurance (mandatory)**

☐ Valid passport or ID card (original and photocopy)

☐ Visa (for students from non-EU/EEA countries)

☐ ID photos

☐ Valid European Health insurance card (students from EU countries)

☐ Copy of international health insurance (see [page 31](#))

☐ Sufficient cash (deposit for a room, tickets etc.)

☐ Copy of Bank statement to prove sufficient financial means (€615/month)

☐ Copy of mobility contract or scholarship

☐ Copy of Birth certificate translated into French (for housing financial assistance see [page 28](#))

☐ Copies of the pay slips and accommodation certificates of your parents or relatives (for housing guarantor see [page 25](#))

☐ Unlocked phone for French SIM card

☐ Your printed portfolio (useful to show your work to teachers as you start the semester and register to classes)

Music: bring a USB drive with your recordings

Arrival

By plane

Mulhouse

Euroairport www.euroairport.com

From the EuroAirport Basel-Mulhouse-Freiburg, a shuttle bus connects the airport to the Saint Louis's train station. There you can continue by train, regional train (called TER), to Strasbourg. www.ter.sncf.com

Prevailing price level:

Saint-Louis – Mulhouse 6,10 €

Saint-Louis – Strasbourg 23,10 €

Strasbourg

The Strasbourg international airport

www.strasbourg.aeroport.fr welcomes flights from more than 200 destinations.

A shuttle train connects the airport to the train station (9min ride, €4.30)

www.ter.sncf.com

By train

A high speed train (TGV) connects Paris Charles de Gaulle Airport (Terminal2) to Strasbourg (1:50 ride)

The SNCF <https://www.sncf-connect.com/en-en/> offers many regular trains to Strasbourg and Mulhouse from Paris and other major cities in France and Europe. Fares vary a lot depending on the date of purchase.

Prevailing price level:

Paris – Strasbourg 25 €- 70

Paris – Mulhouse 30€- 90

By bus

The bus companies Eurolines, Flixbus, Megabus and Ouibus cover over 1,500 destinations in Europe.

www.eurolines.fr

www.flixbus.fr

fr.ouibus.com

Bus stops :

Mulhouse: avenue du Général Leclerc

Strasbourg: 1, place de l'Étoile

By Car sharing

Within France the cheapest way to travel is by car sharing using Blablacar. www.blablacar.fr

Housing

Housing in Mulhouse and Strasbourg

HEAR does not have on-campus accommodation. However, the International Office can provide a list of offers for shared flats or apartments to rent (mostly offers from our outgoing students). If you come for the Spring Semester, it could also be possible to take over the room from an exchange student who stays only for the Fall semester.

Advice on renting with a private owner

Sometimes, owners can be reluctant to rent a room for only one semester. Please note that it is in your right to say that you are here for an exchange this Academic year, and later warn the owner if you have to leave earlier than planned.

Indeed, according to the French law, the rules of termination of the renting contract clearly state that you have the right to officially announce an earlier date of termination. There is a simple procedure to follow: sending a 'préavis' letter notice to the owner with postal confirmation of receipt within 1 month prior to your departure (you can find french templates on the internet).

Student housing in Strasbourg

A few rooms in the Strasbourg student residency (Paul Appell) can be reserved through the HEAR International Office.

You'll be contacted in due time with updated information.

CROUS – Student housing

The Centre Régional des Œuvres Universitaires et Scolaires (CROUS) is a public organisation which provides student rooms for rent at low rates. Students need to create an account www.messervices.etudiant.gouv.fr and fill out an online application (DSE – Dossier Social Etudiant) before the end of May.

Students applying after the deadline will be on a waiting list.

CROUS offices

Mulhouse: 1, Rue Alfred Werner

t. +33 (0)3 89 33 64,644

Strasbourg: 1, Boulevard de la Victoire

t. + 33 (0)3 88 21 28 00

Location et colocation | Rental and flatshare

You can also find a studio, a furnished room or a flatshare on these websites:

Student offer:

- www.adele.org
- amitel.eu
- www.crous-strasbourg.fr
- www.leclubetudiant.com
- www.mgellogement.fr
- www.lokaviz.fr

Flatshare:

- www.appartager.com
- www.colocloft.com
- www.lacartedescolocs.fr

General offer:

- www.immoregion.fr
- www.leboncoin.fr

Temporary accommodation

Exchange students often reserve a room for a few days which gives time to visit some apartments and meet the owner in person.

BnB

- www.airbnb.com

Hostels

- www.thepeoplehostel.com
(near the Visual Arts campus in Strasbourg)
- www.fuaj.org
- www.ciarus.com

Free accommodation

- www.couchsurfing.com
- www.talktalkbnb.com get a free room in exchange for communication in your native language. More information see [page 46](#), Learning French)

Bed and CROUS

For short term stay in a student residency near the Visual Arts campus in Strasbourg
<https://www.bedandcrous.com>

Youth hostel in Mulhouse

www.aubergejeunesse-mulhouse.com

Housing budget

Garant | Housing Garant

Your landlord might ask for a Garant (a person who takes responsibility for the rent if it isn't paid anymore) before signing the lease.

Consequently, we strongly advise you to bring with you:

- ☐ copies of the last pay slips
- ☐ copies of the accommodation certificates of your parents or relatives who agree to take this responsibility.

If you can't find a guarantor you can apply to the French government guarantor organisation (VISALE) on: www.visale.fr

Frais d'agence | Agency fees

If you find your accommodation via a renting agency, you will usually have to pay a month's rent in agency fees.

Caution | First deposit

Rent prices in Strasbourg and Mulhouse can vary between €200 and €500 per month (€180 in a student residency room). A first deposit will be required before you move in; it usually equals 1 month rent. This deposit will be refunded at the end of your stay if there hasn't been any damage to the property. There is also a mandatory subscription to annual housing insurance that can cost between €6 and €50.

APL | Housing financial assistance

You should check as soon as possible whether you are eligible for housing financial assistance in France. The Caisse d'Allocations Familiales (CAF) is a French state assistance fund which can provide housing aid called APL (Aide Personnalisée au Logement). The level of help depends on your income, type of housing and rent paid. In case of shared property, every tenant can benefit, but only with regards to the proportion of the rent. Each individual must apply separately.

For more information, please consult the dedicated page on the website : www.hear.fr/visual-arts/art-object/

CAF office:

Mulhouse
26 Avenue Robert Schuman
Strasbourg
22 Route de l'Hôpital

Settling in France

28 – 32

Insurances

During your stay in France, you might be required to show proof of subscription to one or several types of insurance such as liability insurance, housing insurance or health insurance.

Assurance responsabilité civile | Civil liability insurance

If you unintentionally caused damage to another person or his/her property, your insurance agency will deal with the claim (this insurance is required to use or borrow certain equipment at HEAR).

Assurance logement | Housing insurance

By subscribing to this insurance, the apartment or room you rent and your possessions are covered against the risks of flood/fire damage or against burglary. This insurance often includes civil liability insurance but do check before subscribing.

See below contact and addresses for LMDE and MGEL agencies in Strasbourg and Mulhouse.

Assurance Maladie | Health insurance

Health insurance is a complex but essential point you will need to review before coming to France.

Exchange Students

Exchange students can subscribe to the French Social Security if they are not already covered by another health insurance in their home country.

As an exchange student, you are not required to register to French social security, but you must bring one of the 3 documents below:

- a European health insurance card (only students from EU/EEA). This card should be requested at your local health services agency in your home country. If you pay for healthcare services
- in France, this card will enable you to forward your requests for reimbursements to your health agency in your country. • or a certificate of private insurance providing full coverage for medical risks, without restrictions related to cost, valid for the duration of the stay in France.
- or a SE401-Q-104 form issued by the Régie d'Assurance Maladie du Québec (only students from Quebec).

Graduate students

If you don't have one of the 3 elements above or if you are a graduate student, you need to subscribe to French Social Security: French Social Security (*Sécurité Sociale* or *Sécu*) is the state institution providing financial assistance to one's healthcare expenses.

Graduate students are required to subscribe to the French Social Security under this website:

etudiant-etrangier.ameli.fr/

Social security works with reimbursement rates which allow from 15 to 70% of the total medical service fees to be reimbursed to the beneficiaries.

You will be given a *carte vitale* that should be presented during visits to all healthcare professionals: doctors, medical specialists, hospitals, clinics, pharmacies. This card allows quick reimbursements of 15 to 70% of your healthcare expenses, and an additional 30% for those who have subscribed to top-up/complementary insurance.

Mutuelle | Complementary insurance

Social Security only reimburses part of your healthcare expenses. *Mutuelle*/complementary insurance will cover all or part of the difference between the medical service fee and the French social security reimbursement rate.

In Strasbourg and Mulhouse there are two student health insurance agencies for the complementary insurance, LMDE and MGEL.

LMDE

www.lmde.com

Strasbourg

6 C, place d'Austerlitz
t: +33 (0)1 40 92 54 85

MGEL

www.mgel.fr

Mulhouse

45, avenue du Président Kennedy
t: +33 (0)3 89 32 04 67

Strasbourg

4, Rue de Londres
t: +33 (0)3 88 60 26 26

CPAM

www.ameli.fr

Mulhouse

26, Avenue Robert Schuman

Strasbourg

6, Rue de Lausanne

MGEN

www.mgen.fr

Mulhouse

10, Rue Gustave Hirn

Strasbourg

4, Rue Henri Bergson Hautepierre

Healthcare

Whether you are insured in France or in your home country, you are generally required to pay medical expenses as they occur: when visiting a doctor, buying prescribed medicine or for medical tests. Then you can ask to be reimbursed by your health insurer.

A general doctor may charge from around €25 for a consultation.

Types of payment vary: doctors usually accept checks and credit cards, some might not accept cash.

More information: [www.ameli.fr>droit et démarches>Europe, international](http://www.ameli.fr>droit-et-demarches>Europe,international)

The following medical centers are accessible and English-friendly:

Doctolib

Doctolib is an online appointment-booking service. You can search for General Practitioners or specialists and filter your choice depending on location, price range, language spoken, and availability.

www.doctolib.fr

SSU

The SUMPPS (Service Universitaire de Médecine Préventive et de Promotion de la Santé) in Mulhouse and the SSU (Service de Santé Universitaire) in Strasbourg are student organization which give access to certain medical services (medical check, vaccin, social and psychological assistance etc.). These services are free of charge if you present your Pass Campus.

Mulhouse

Service santé de l'UHA
1 rue Alfred Werner
Maison de l'étudiant – 1^{er} étage
t. +33 (0)3 89 33 64 45

Strasbourg

6, rue de Palerme
Monday to Thursday, from 8:30 am to 5:30 pm
Friday from 8:30 am to 5 pm
Contact – t. +33 (0)3 68 85 50 24
✉ sante.etudiants@unistra.fr
en.unistra.fr/campus-life/settling-in-strasbourg/health-and-medical-centres/university-health-service

Centre de santé MGEN | Healthcare center

Mulhouse
Possibility to go see a nurse
Maison de l'Etudiant
1, rue Alfred Werner
t. +33 (0)3 89 33 64 47
✉ linda.wendling@uha.fr

Strasbourg

Consultation with a general doctor is possible without an appointment. Appointments are mandatory for consultations with medical specialists, you can schedule an appointment by email.
4, Place du Pont aux Chats
t. +33 (0)3 88 21 14 60
✉ consultation642@mgen.fr

Psychologist counselling

Mulhouse visual arts campus:
A psychologist is available for consultations at HEAR in Mulhouse (2nd floor).
✉ ecoute-mulhouse@hear.fr
Or without appointments when the door is opened

Strasbourg visual arts and Music campuses:
a psychologist is available on site by appointment (✉ aurorealexandrepsy@gmail.com) or walk-in consultations.

Bank

Opening a bank account in France is not mandatory but it can be useful during your stay in France. For some regular payments (phone or rent) or for other transactions (such as refund from healthcare expenses or transfer of housing aid money), you might be asked to provide a *RIB* (*Relevé d'Identité Bancaire*), which provides

your bank account details. It is available on your bank statements and in your check book. You can also print a *RIB* at an ATM machine or ask for one in your bank.

To open a bank account you will in most cases need to present the following documents:

- ☐ Your ID,
 - ☐ Your residency permit (titre de séjour),
 - ☐ A proof of address including your name and address, (rent contract, phone bill)
- or
- ☐ a certificate from your landlord (en italique: *attestation d'hébergement*)
 - ☐ with a copy of your landlord's ID
 - ☐ and a bill with his/her name.

Phone

In order to communicate with your French friends and fellow students we recommend you to acquire a French phone number.

Please give your French phone number to the International Office who might call you in case of emergencies.

Monthly payments are called 'forfait'. Make sure to choose a 'forfait sans engagement' as opposed to 12 months or 24 months contracts.

To compare online prices:

www.touslesforfaits.fr

www.lebonforfait.fr

Emergencies

Emergencies (from mobile phones): 112

Medical emergency (SAMU): 15

Police: 17

Fire Brigade: 18

Student representative

Do you feel stressed... anxious... isolated?

Are you having difficulties in your studies?

You can talk about it to a student representative!

They can listen to you and suggest solutions adapted to your situation. If necessary, they can refer you to professionals who will help you, within the existing help network. And this always remain confidential. At HEAR, you will find the email address of the student representative posted on the board in front of the Academic affairs and international mobility office.

An article on the role of the Student representatives:

hear.fr > news > étudiant relais

and: sante.unistra.fr > Étudiants Relais

SOS Médecin | Home visiting doctor

You can reach a doctor anytime of the day and night who can come directly to your home.

More information on SOS Médecin website

✉ www.sos-medecins67.fr

† +33 (0)3 88 75 75 75

SOS Main | SOS Hand

If you have an accident with your hand, cover it with a clean fabric and go anytime of the day and night to this hospital dedicated to hand emergencies.

Mulhouse

14 Boulevard du Président Wilson

68100 Mulhouse

† +33 (0)3 89 32 55 07

Strasbourg

† +33 (0)3 68 76 52 18

Hôpital de Hautepierre

Avenue Molière

67200 Strasbourg

Student life

33 – 39

Transport

Biking

Most people in Strasbourg or Mulhouse ride a *vélo* (bike). We recommend that you buy a second-hand bike and to make sure to buy a good quality lock to minimize the risk of theft:

Leboncoin www.leboncoin.fr

You can also rent a bike from various agencies:

Mulhouse: Velocité <https://www.compte-mobilite.fr>

Strasbourg: Velhop <https://velhop.strasbourg.eu/>

Some associations offer an affordable yearly membership to allow you to fix your bike with the help of their volunteers.

Strasbourg: velostation-strasbourg.org

and www.bretzselle.org

Mulhouse: [f VeloStationMulhouse](#)

Train

In France there are different types of trains: TER (regional trains), Corail (regular trains), and TGV (high speed trains). If you travel by TGV you will need to reserve in advance.

The 'Fluo' card allows you to benefit of 50% discount on every regional train within the Alsace region (this discount applies to one companion on week-ends and public holidays). This card costs only 1€ if you are under 26!

You will find many low cost train tickets on www.ouigo.com

More information on SNCF website and CTS

Strasbourg

www.ter.sncf.com

www.cts-strasbourg.eu/fr/

If you plan to go to Germany as a group, you may buy a cheap ticket for regional trains for up to 5 persons. www.bahn.de

This ticket will be valid from Kehl (Strasbourg) or Müllheim (Mulhouse) on.

Bus

The bus companies Eurolines, Flixbus, Megabus and Ouibus cover over 1,500 destinations in Europe.

www.eurolines.fr

www.flixbus.fr

www.fr.ouibus.com

Bus stops:

Strasbourg

1, Place de l'Étoile

Mulhouse

Avenue du Général Leclerc

Car sharing

Within France the cheapest way to travel is by car sharing using Blablacar. www.blablacar.fr

Public transportation

In Mulhouse: the bus&tram Solea card

costs ~€20/month (age limit: 26)

www.solea.info

In Strasbourg: the bus&tram Badgéο card

costs €~€28/month (age limit: 25)

www.cts-strasbourg.eu

Shopping guide

Supermarkets

Auchan and E-Leclerc are the two largest supermarket chains in Strasbourg and Mulhouse. Lidl, and Aldi are discount stores usually located outside of the city center. Carrefour City and U express are small supermarkets located in the center.

You can find organic food in Biocoop, Côté Nature, Maison vitale and Naturalia stores. Bocal, BeeVrac and Day by Day are bulk stores which also sell organic food.

You will be able to pay by credit card in most of these stores. Opening hours may vary from 7 am to 9 pm. All stores are closed on Sunday, sometimes on Monday and on public holidays, except for Carrefour city which is open from 9 am to 1 pm. From Strasbourg you can also easily go shopping in Germany (Kehl) where some products are cheaper.

Student association ASEF Strasbourg

A distribution of basic weekly grocery products is held by the student association ASEF every Wednesday at 6 pm for a contribution of €1. This service is dedicated primarily for students with lower resources. To register and get the ASEF access card you need:

- ☐ your student card
- ☐ 1 ID photo.

Student solidarity grocery

ASEF Centre Bernanos: 30, rue du Maréchal Juin

Open Markets

Buying fresh fruit and vegetables can be cheaper at the open markets.

Mulhouse food market agenda
www.mulhouse.fr

Strasbourg food market agenda
www.strasbourg.eu/marches-brocantes

Second hand shops

Mulhouse: 4 avenue alsace, Cernay
Strasbourg: 5 Chemin de la Holtzmatt, Montagne Verte

Or second hand boutiques

Mulhouse :

- Friperie Le Léopard :
5, rue de la Meurthe
- Recollection :
3, pl. de la Concorde

Strasbourg :

- Rehab : 18 Quai des Pêcheurs
- Le Léopard : 8, rue des Veaux
- Froc'N Roll : 10, rue Ernest Munch
- Vetis : 19 Rue Vauban
- Oxfam : 5-7 Rue de la Division Leclerc

For second hand goods sale check vide-greniers website www.vide-greniers.org

The best website to find cheap furniture, phones, bikes etc ... is Le Bon Coin www.leboncoin.fr

Art supply stores

Mulhouse:

- Rougier&Plé : 25 pl. de la Réunion
(-15% for HEAR students)
- Le Géant des Beaux Arts :
40 av. du Président Kennedy
- Passion des Arts — Rixheim : 124, rue de l'île Napoléon, 68 170 Rixheim (close to Mulhouse)
- Cultura in ZAC du Carreau Anna, Village Décathlon, 68 270 Wittenheim.

Access: tram 3, Tram 1 and Bus 23 (3 changes, approx. 40 min of travel)

Strasbourg:

- Le Géant des Beaux-Arts :
7 Rue Kuhn and 91 route des Romain
- Rougier&Plé : 4, rue du 22 Novembre
(-15% for HEAR students)

Music stores

Mulhouse :

- Musique Galland : 49, avenue du Président Kennedy, 68100 Mulhouse
- Dino Music: 59, rue de la Source, 68790 Morschwiller-le-Bas

Strasbourg :

- Arpeges Armand Meyer: 21, rue de Lausanne
- Le Salon de Musique : 8 rue Finkmatt

Professional experience in France

Student jobs in France

Students from the European Union and the European Economic Area (EEA), Andorra, Monaco and Switzerland have the right to work in France during the course of their studies and do not need a work permit.

The temporary residence permit entitles foreign students to a right to work in France. Students with a long-stay visa benefit of the same rights throughout the period of validity of their visa.

At least 2 days before the first day of work,

the employer will have to write a declaration of employment in the Strasbourg or Mulhouse Prefecture office, and join a copy of your ID card, your residency permit or visa, and the employment contract stating the dates of beginning and end of work period and the amount of work hours.

The volume of work is limited to approx. 964 hours per year (please check with the Prefecture).

The employer just needs to send an email to employeurs-etranagers@bas-rhin.prefgouv.fr

Internship in France

A student internship is not classified as employment and doesn't require a permit.

However, a *convention* (internship agreement) is required. This agreement between the student, the company and HEAR defines the type of work, training and conditions (hours, place of work, allowances).

If you are registered as graduate student at HEAR you can ask for an Internship Agreement in the Academic Affairs Office. As an exchange student, you will have to ask your home university to sign the Internship agreement. The internship agreement is also available in English. You can also check with your home university for internship possibilities within the ERASMUS+ program (min. length 2 month) and you can consult internship offers on the school's information board.

Student community and university services

Student community

Strasbourg aime ses étudiants

The city of Strasbourg organises a welcome program for new students.

www.strasbourgaimesesetudiants.eu

Maison Universitaire Internationale

La Maison Universitaire Internationale www.unistra.fr is related to Strasbourg University and is a place where Foreign students can rent a studio, develop collaborative projects, find practical information about their stay and participate to multicultural events. They animate a facebook page with opencalls and useful tips [f international.unistra](https://www.facebook.com/international.unistra)

Strasbourg

15, rue du Bassin d'Austerlitz

JAA – Jeunes Ambassadeurs Alsace

The JAA Association welcomes every year foreign students in Strasbourg.

www.ambassadeurs.alsace/devenir-jeune-ambassadeurs

ESN – Erasmus Student Network

ESN activities revolve around organising various events, providing help and support for incoming foreign students and promoting international mobility abroad. The local Strasbourg ESN group is formed with about 20 volunteers.

strasbourg.esnfrance.or

[f esn.strasbourg](https://www.facebook.com/esn.strasbourg)

CROUS' services

As exchange student, the subscription for an Academic year is free.

Graduate students need to pay the CVEC fee (€105).

The Contribution to Student and Campus Life offers services that benefit everyone, including culture card, access to preventive medicine services (SUMPS) and sports activities (SUAPS).

Graduate students must connect to the CROUS:

<http://messervices.etudiant.gouv.fr>, to obtain either a payment certificate or an exemption certificate. This certificate contains a number that may be required. This is a mandatory procedure for all graduate students and must be done before registration at HEAR. The proof of payment or exemption must be presented at registration.

Restaurant Universitaire (R.U.) – Student Cafeteria

A university service that offers to students meals from €3.

Mulhouse

R.U. Mulhouse

5 rue Alfred Werner

R.U. de la Fonderie

16 rue de la Fonderie

Strasbourg

R.U. Esplanade

32 boulevard de la Victoire

R.U. Gallia

1 Place de l'Université

R.U. Paul Appell

23 rue du Jura

Le Stiff

1b quai Saint-Thomas

F.E.C. (Foyer de l'étudiant catholique)

17 pl. Saint-Etienne

IZLY

IZLY is a service attached to your student card and a mobile app allowing you to pay for various campus and CROUS services such as R.U. restaurants, photocopies, etc.

You can transfer money from your bank account to your IZLY profile by using IZLY services points or by downloading the app.

CROUS Social Assistance

This service helps students to overcome daily issues such as finances, housing, health, family... Don't hesitate to call to schedule an appointment with an assistant in Mulhouse or Strasbourg

www.crous-strasbourg.fr
www.izly.fr

Public Libraries

There are several libraries in Mulhouse and Strasbourg offering a great variety of books and DVD's. Beside French literature, you can find French textbooks and also international literary works. After registration you may borrow up to 10 books for several weeks.

Mulhouse

Bibliothèque Grand'rue
 19, Grand'rue BP 1109

Bibliothèque Universitaire

8, rue des frères Lumière
Bibliothèque Universitaire Fonderie
 Campus Fonderie, 16, rue de la Fonderie

Strasbourg

Médiathèque André Malraux
 1, Presqu'île Malraux
Bibliothèque nationale et universitaire (BNU)
 6, place de la République

Activities

AV LAB – Strasbourg

Strasbourg's Fab Lab offers: 3D printer, 3D scanner, CNC milling machine, lazer cutter, vinyl cutter, models workshop

You have to provide an Assurance responsabilité civile (civil liability insurance).

Price for one year admission: €10

You can rent machines per hour, but will need to follow an initiation beforehand. Prices can vary per machine. Shadok (first floor), Les dock's, 25, Presqu'île André Malraux

www.av-lab.net

University choir

Mulhouse: culture UHA
www.culture.uha.fr
 Strasbourg: evus. unistra
evus.unistra.fr

You can play the piano in the train stations of Mulhouse and Strasbourg. You can also use the pianos available at HEAR Mulhouse and Strasbourg Visual Arts Campuses.

SUAPS

In Strasbourg, SUAPS offers 60 different physical activities in various forms and levels, adapted to your schedule.

sport.unistra.fr

Swimming poolsMulhouse

One entrance (student price) costs: ~€3
 • Piscine de l'Illberg : 51, boulevard Stoessel

Strasbourg

One entrance (student price) costs: €6.
 • Piscine de la Kibitzenau
 1, rue de la Kibitzenau
 • Piscine du Wacken (outdoor heated pool)
 8, rue Pierre Courbertin

Carte Culture

This card offers many price reductions for shows, movies, theatres and free access to more than 20 museums in Alsace. This card is included in your Pass Campus.

www.carte-culture.org

You find information about cultural events and tickets in the Boutique Culture:

Le 5^e lieu, 5 place du Château, Strasbourg

Going out

Museums and galleries

Museums entry in Strasbourg and Mulhouse are free with the Carte Culture.

Some French, Belgian and Swiss Museums offer a free entry on the first Sunday of every month.

You can buy the Museums pass (129€) that gives you unlimited access to French, German and Swiss Museums. www.museumspass.com

Mulhouse

- Museums: www.musees-mulhouse.fr
- Kunsthalle: kunsthallemlulhouse.com
- Motoco: www.motoco.fr
- Le séchoir: www.lesechoir.fr
- La Manufacture: 17, rue de Quimper (Manurhin) www.ateliersouverts.net>La Manufacture

Strasbourg

- Museums www.musees.strasbourg.eu
- Apollonia www.apollonia-art-exchanges.com
- CEAAC www.ceaac.org
- Syndicat Potentiel www.syndicatpotentiel.org
- La Chambre www.la-chambre.org
- Stimultania www.stimultania.org
- Le Shadok www.shadok.strasbourg.eu

Cinemas

Mulhouse

- Le bel Air : 31, rue Fénelon, www.cinebelair.org
- Le Palace : 10, avenue de Colmar www.lepalacemulhouse.com
- Le Kinépolis : 175, avenue Robert Schuman www.kinepolis.fr

Strasbourg

- Star : 27, rue du jeu des enfants
- Star Saint-Exupéry : 18, rue du 22 novembre www.cinema-star.com
- Le Cosmos : 3, rue des Francs Bourgeois cinema-cosmos.eu
- Vox : 17, rue des Francs Bourgeois www.cine-vox.com
- UGC Ciné Cité : 25, route du Rhin www.ugc.fr

Concerts

Mulhouse

- Noumatrouff : 57, rue de la Mertzau www.noumatrouff.fr
- La Filature : 20, allée Nathan Katz www.lafilature.org

Strasbourg

- Quai de Scène : 5 quai du général Koenig www.quaidescene.fr/
- Le Molodoï : 19, rue du Ban de la Roche www.molodoi.net
- Philharmonic Orchestra of Strasbourg: www.philharmonique-strasbourg.com

Theaters

Mulhouse

- La Filature www.lafilature.org
- L'entrepôt www.lentrepot.org
- Théâtre de la Sinne www.mulhouse.fr/fr/theatre-de-la-sinne/

Strasbourg

- TNS tns.fr/
- The Maillon www.maillon.eu
- Opera house www.operanationaldurhin.eu
- TAPS www.taps.strasbourg.eu
- TJP www.tjp-strasbourg.com

Bars

Mulhouse

- Le Gambrinus : 5, rue des Franciscains
- LC 2 : 17 rue Henriette

Strasbourg

- Le Brasseur : 22, rue des Veaux
- L'Atlantico : quai des Pêcheurs
- L'Académie de la Bière : 29, rue des Juifs
- F.E.C. (Foyer de l'étudiant catholique) 17 place Saint-Etienne
- La Taverne française : 12, avenue de la Marseillaise
- Le Korrigan : 20, rue du Vieux Marché aux Grains

Local cultural information

Newspaper

DNA – Dernières Nouvelles d'Alsace is the leading daily paper in Alsace. In the Culture column you

will find all the information about exhibitions, shows, theaters etc. On sale in kiosks: €1,10

Free cultural magazines

You can find the following magazines at HEAR or in different museums, bars and shops.

Artline: Contemporary art magazine bilingual in German and French, concentrated on Germany (South), Switzerland (Nord East), France (Grand Est), Austria (West), Liechtenstein and Luxembourg.

Accélérateur de particule:

Promotes contemporary art and supports local artists with exhibitions, visit of workshops and other measures.

www.accelerateurdeparticules.net

Coze: an agenda focusing on concerts (only in Strasbourg)

Journal des Spectacles : List of shows and events in Alsace

Poly: an essential magazine for detailed information about the cultural and artistic life in Strasbourg. A magazine illustrated, among others, by former HEAR students. Discover!

Novo: a magazine editing articles and an events calendar on Strasbourg and Mulhouse cultural life

Zut! : general information about Strasbourg and Mulhouse cultural life.

Online cultural agenda

HEAR Agenda

www.agenda.hear.fr

Alsace and Grand Est

Cultural news from the Grand Est region and its border countries

culturegrandest.fr/

www.alsace.com/decouvrir-et-visiter/offre-culturelle/

www.info-alsace.com/culture

Contemporary art network and agenda
plandest.org

Concerts

www.musiqueactuelles.net

Mulhouse

Agenda de l'Office du Tourisme

www.tourisme-mulhouse.com/FR/planifiez/agenda-evenements.html

Strasbourg

Strasbourg Curieux

www.strasbourg.curieux.net

Strossburi

www.strossburi.eu

Your studies at HEAR

40 – 44

Practical Information

Teachers

You can find the list, photos and biographies of our Music and Visual arts teachers here:

www.hear.fr/la-hear/enseignants/

Taïga

Taïga is the academic network and database accessible to HEAR students and staff. You can access it by clicking on 'Services numériques' (at the bottom of hear.fr menu page), then on 'Taïga - étudiants'. Taïga allows students to choose their study programme, find information about time and room schedules, to upload and download administrative documents such as registration certificate and transcript of records.

Pass Campus | Student card

The HEAR student card is given to all students upon enrolment. It serves various valuable purposes such as paying at the university restaurants and cafeterias, borrowing documents and books from libraries, using copiers and printers. You can also load your public transportation tickets on this Pass or use it as a travel card.

www.passcampus.fr

E-mail address and Office 365

Once accepted as a student at HEAR you will receive a @hear.fr email address. The administration of the school will communicate with you only through that address.

The Office 365 platform makes it easier to contact

and share documents with students and teachers. This e-mail account will be disabled once you leave the school.

Here are the 5 steps to set up an automatic transfer from your HEAR e-mail account to your personal one:

1. log in login.microsoftonline.com;
2. click on the 'settings' icon;
3. click on 'Courrier';
4. click on 'Transfert';
5. type in your personal e-mail address and click 'Enregistrer' to save.


Access to materials

Depending on your projects and on the department in which you are registered, some materials are available at HEAR. For example different sorts of paper for the digital lab and inks for silkscreenprinting etc. are available for students in the Communication department; and glass, wood, metal, clay for students in Art-Object department.

Student Associations

[Académie supérieure de musique](#)

La Muse is the association created by the students from the Académie supérieure de musique de Strasbourg - HEAR.

 [La Muse](#)

Mulhouse Visual Arts Campus

Very involved in school life, especially during the Tranches de Quai evenings, it is an essential resource for the students. The association plans events for students and provides school supply for sale. The membership is free.

Contact: ✉ lalala.mulhouse@hear.fr

Strasbourg Visual Arts Campus

La Mine is an association created by and for the students. The association plans regular friendly get-togethers in the student bar and may provide financial or material support for individual or collective projects. All students are invited to join. The membership costs less than €10/year.

Contact: ✉ lamine.strasbourg@hear.fr

La Pioche

This student association promotes circular economy by selling second hand material student can use for their projects.

Contact: ✉ lapioche.strasbourg@hear.fr

Photocopy machinesMulhouse Visual Arts Campus

Please contact the Academic Affairs Office for information about the color laser printer available. You will need printing credits (crédits d'impression) to be able to print. You can scan documents for free in the Digital lab. Rates: according to size (A4/A3), b&w or color.

Strasbourg Visual Arts Campus

You will need to follow the PIF initiations in order to print in the digital lab.

Some photocopy machines work with the Student card.

You can also scan documents for free if you bring your USB drive to the Library.

Cafeteria

Académie supérieure de Musique of Strasbourg
The *Foyer des étudiants* room has a microwave.

Mulhouse Visual Arts Campus

The cafeteria offers vending machines, a refrigerator and a microwave. Everyone can eat there, provided they clean up afterwards. The refrigerator will be completely emptied every Friday night.

Strasbourg Visual Arts Campus

The student bar is in the Manufacture des tabacs building and is accessible all week long. Vending machines are available in the Patio in front of the auditorium (Main Building).

HEAR LibrariesAcadémie supérieure de musique of Strasbourg

The library of the Strasbourg Conservatory of Music is accessible for free. You can consult over 50,000 documents: music scores, specialised books and periodicals on music, dance and theatre, CDs, DVDs.

Opening hours

- Monday, 2pm – 5:30pm
- Tuesday – Thursday, 9am – 12am ; 1:30pm – 5:30pm
- Friday, 9am – 12:00am
- Saturday, 9am – 12:30pm

Mulhouse Visual Arts Campus

Apart from the Art and Design fundamentals, you can also find documents on sound experimentation, as well as specific resources in relation to professionalisation, audiovisual funds and periodicals.

Opening hours: see the notice board on the door

Strasbourg Visual Arts Campus

You may borrow up to 8 documents for 3 weeks. The multimedia library has a collection of 41,000 documents at your disposal: books, magazines, and videos, multimedia documents. Its aim is to accompany the students' research and work, by offering updated references in close relation with HEAR's creative and pedagogical process.

Opening hours

- Monday – Thursday, 8 am – 6 pm
- Friday, 9 am – 1 pm and 2 pm – 5 pm

WiFiAcadémie supérieure de musique of Strasbourg

You have free and unlimited access to Wifilib which is available in the building. Select the 'Straswifi' network on your device and follow the instructions.

Mulhouse and Strasbourg Visual Art Campuses

You can find codes to access HEAR WiFi network on the walls of the school.

Digital labsAcadémie supérieure de musique of Strasbourg

You can access computers available in the library.

Mulhouse Visual Arts Campus

There is one Digital lab. You can use the computers using your personal student account. The usernames and password will be sent to you by e-mail.

Strasbourg Visual Arts Campus

There are two Digital labs, one in the Main building and one in the Annex building. Log into your student account with your personal username and password (same as WIFI access).

Aide à projet étudiant | Student project grant

This financial and methodological grant (of maximum 500€, 750€ or 1000€ depending on the project, not exceeding 50% of the project's budget) aims at encouraging and supporting student initiatives with a public dimension (exhibitions, performances, concerts, editions, etc.). After validation by the coordinator, the project is submitted and presented orally to the HEAR Project Grant Commission.

Please contact the academic affairs office to have the contact person.

Exhibit spaces

Students can experiment hanging their work in a space, under the responsibility of a faculty member, in Mulhouse (Room 4 – Paintings –, Gallery 2, Hall, Le Plateau) and in Strasbourg (Le Patio, Le passage, l'Atelier d'Artiste and the Cube). On these occasions, the exhibition team can help the students with regards to diverse technical aspects of hanging, photographing and lightening an exhibition. You need to reserve the space well in advance by contacting the exhibition team:

Mulhouse: ✉ antonia.majeru@hear.fr

Strasbourg: ✉ antoine.lejolivet@hear.fr;

Installations that require transforming the premises (painting, moving, drilling, occultation, etc.), or a particular use of the school's park must previously be subjected to approval. Please contact International Office for more information. Any unauthorized installation will be immediately removed.

La Chaufferie

Throughout the year La Chaufferie, HEAR's gallery, hosts exhibition, as well as cultural events and projects.

5, rue de la Manufacture des Tabacs, Strasbourg

Exchange Students

Here is a short video of former exchange students who talk about their experience at HEAR:

📺 utv.unistra.fr > Exchange Students sharing their experience at HEAR

First days at HEAR

Trombinoscope

At the beginning of each semester, the trombinoscope (pictures and contacts of exchange students) is sent to the administrative staff, the teachers and the students of HEAR so that they can easily identify you and contact you on your HEAR e-mail address.

Welcome meeting

The international office aims at making the transition as easy as possible for all our new students who are adjusting to a new country,

language and culture.

A specific welcome meeting is held at the beginning of each semester for exchange students. We will give you all useful information regarding your stay in Mulhouse or Strasbourg and regarding your studies at HEAR.

Registration certificate

During the welcome meeting each student will be given a *certificat de scolarité* (registration certificate). You might need this document to show proof of arrival in your home university, to apply

for housing financial assistance or for other types of grants in your home country.

Communicating with teachers

The best way to reach teachers is via e-mail. We recommend you to set a meeting with your coordinator teacher at the beginning of the semester to talk about your work and your objectives regarding your exchange semester at HEAR. Please go to the *Academic affairs & mobility office* if you have any doubt regarding time and room schedules of classes.

Choosing classes

It is possible for exchange students to attend classes from a different department as long as they follow the main classes of their department, specialisation or workgroup. You should first ask the teacher about space availability in each and prerequisite which varies. Talking about the course offer with your coordinator and classmates within the first 3 weeks of the mobility can be helpful.

Learning Agreement

The learning agreement must amount to a minimum of 30 ECTS credits per semester, unless your home university requires less. In that case please ask your coordinator to confirm it by email to international@hear.fr

You have up to 3 weeks after the beginning of the semester to define your study programme.

Académie supérieure de musique of Strasbourg

The Learning Agreement will be filled out with the Academic Advisor. Please contact the Académie to set up an appointment with the Academic Advisor.

Structure of the curriculum in the Visual Arts Campus

Main study department / Groupe pédagogique

The most important and mandatory classes and projects this semester will be with your study department / 'Groupe pédagogique'

The work you produce in this study department will have to be presented at the end of the semester during the final presentation / 'bilan'

'Ateliers' / Technical workshops

You can apply for an initiation in one or several technical workshops / "ateliers"
Please go directly to the workshop (preferably at the beginning of the morning or the afternoon)

and talk to the coordinator to know about the registration process.

They might ask you a bit about your project. It is important, once you followed an initiation, that you still work on a project in that workshop throughout the semester and that you leave one copy of the finished work to the coordinator. You will find more information on the structure of the curriculum on our website: www.hear.fr/your-studies-at-hear/practical-information

Validating your exchange

By the end of the semester you should prepare for the bilan or évaluation (final oral presentation) which consists of a final exhibition and oral presentation of all your works done during the semester. You have to pass this presentation in order to obtain your grades and credits. Please talk with your coordinator to set the date for your bilan and let the International Office know about the time and place. It is important to check again the course requirements to validate each class listed in your Learning Agreement in order to obtain the credits.

Grading scale

A > Excellent

B > *Très bien* / very good

C > *Bien* / good

D > *Assez bien* / satisfactory

E > *Passable* / correct

FX > *Échec (un travail supplémentaire est nécessaire)* / fail (extra work is needed)

F > *Échec* / fail

Transcript of records

A Transcript of records will be issued within 5 weeks after the end of the exchange period. This document will show the semester dates and therefore works as an Attendance certificate. Students will be able to download their transcript of records via Taïga, HEAR's academic network and database.

Leaving HEAR

You are expected to stay until the end of the semester. If for some personal reason you have to go back home earlier, please send an email to sarah.gauthier@hear.fr and your home institution. Be aware that if you leave more than a week before the end of the semester, you might have to partially reimburse your mobility grant to your home institution.

Exchange students highlights

International mobility week

During the international mobility days, we ask exchange students to present their home universities.

End of semester project

Incoming exchange students have the possibility to organise a collective event, a publication, or exhibition outside of the school at the end of their stay. If you are interested please send an email to [✉ sarah.gauthier@hear.fr](mailto:sarah.gauthier@hear.fr) at least 2 months before the end of your mobility.

Extension of studies

If you start your stay in the fall semester you can extend the length of your study period for one semester.

It is essential that you first acquire permission via email, from your home institution and then from your coordinator at HEAR.

If you are interested in applying at HEAR as a graduate student for the following academic year, please check application procedures and deadlines [page 21](#).

Regulation and safety

Room access

Opening of the school

Students are asked to respect the school's opening hours. The different campuses might open during certain holidays for students in their graduation year and for exchange students. For more information please contact the Academic Affairs office.

Académie supérieure de musique of Strasbourg

In order to borrow the keys from a specific room please go to the Reception.

Mulhouse Visual Arts Campus

Most rooms are open and accessible without authorisation. For technical workshop rooms, please ask the teaching staff.
T. +33 (0)3 69 76 61 00

Strasbourg Visual Arts Campus

If you need to access a specific room, you can ask to borrow the key at the Reception. Students are not allowed to go home with keys that belong to the school. It is important that you give the key back before the end of the day. If the Reception is closed, please drop off the key in the mail box next to it.

Reception: +33 (0)3 69 06 37 77

Security at HEAR

Technical workshops

The use of technical workshops is coordinated by the faculty, artistic teaching assistants and technicians. In their absence, trained instructors can provide access to some of the studios. To get in, the student should first contact the studio manager, to learn about the personal safety equipment and how it works.

Good to know: most of the workshops require following an initiation before using the infrastructure independently. Consult the *Guide des études* (student guide) and the website for updated information.

You can borrow some of the technical workshops equipment if you show proof of subscription to liability insurance.

Installations

Installations that require transforming the premises (painting, moving, drilling, occultation, etc.), or a particular use of the school's park must previously be approved.

Please contact the Academic Affairs and International office for more information. Any unauthorized installation will be immediately removed.

Specific security measures

Please ask about the security equipment necessary in certain workshops to avoid injuries. It is forbidden to bring chemical products to the school, smoke inside the buildings and park in the garden (please ask authorisation from the Reception to load or unload heavy materials). Please signal to the Reception any dysfunction in the school premises (water leak, light bulbs, etc.)

You can find the complete security rules in the *Guide des études* in the *Règlement et sécurité* section. Please see the Reception before changing the setting of a room for an exhibition.

Learning French

46 – 47

Language centers

You have free access to the Mulhouse and Strasbourg language centers which offer many resources: books, newspapers, computers with language software, tutoring with other students. A visit of the buildings and a presentation of the language center will be held at the beginning of each semester.

Pôle FORCE – Mulhouse

4, rue des frères Lumière
www.learning-center.uha.fr
T.+33 (0)3 89 33 60 01
force.lc@uha.fr

Pôle LANSAD – Strasbourg

4, rue Blaise Pascal
Bâtiment Institut Le Bel
lansad.unistra.fr
Opening hours:
Monday-Thursday 12 am to 6 pm
Friday 12 am to 5 pm
lansad-contact.unistra.fr

PEGE Building (2nd floor, room 216)
61 avenue de la Forêt Noire

Free Linguistic Tandems and meetings

Here are a few ways to practice French in a more informal atmosphere.

LANSAD

You can form a tandem with a student from Strasbourg University by using the LANSAD tandem platform.
<https://lansad.unistra.fr/ressources/tandem>


Talktalkbnb

A supper, a bed for the night and breakfast is offered by your hosts. All they want from you in return is for you to talk to them in your native language. A good way to avoid the hotel/hostel and meet new people on your first days in France!
www.talktalkbnb.com


Language meetings in bars

In Strasbourg, language meetings are organised every month in different bars and cafés.

Les savons d'Helene

 [Les savons d'Hélène](#)

[FrenchEnglishTandem Strasbourg](#)

 [FrenchEnglishTandemStrasbourg](#)

Meet up Strasbourg

www.meetup.com

ESN Strasbourg : strasbourg.esnfrance.org

Fee-based French classes

If you would like to take French classes on a more regular and intensive basis, you can check the following schools.

Université populaire européenne

This is a community college for adult education. It offers a variety of courses including French class.
www.universitepopulaire.fr

Alliance Française

The Alliance Française offers different teaching programmes depending on the type of course you are looking for.

Programmes can be taken over a period of 3 months and will finish with a TCF – Test de Connaissance du Français (Aptitude Test in French)

www.afstrasbourg.eu

Stralang

The school is located behind the University Campus and offers French classes for all levels. You can register for an intensive programme for a month or or night classes, etc.

www.stralang.com

CCI Campus

The Chamber of Commerce and Industry offers different programmes for French learning online but also in Mulhouse and Strasbourg

www.ccicampus.fr

Campus France

This website lists the different summer school programmes in France and institutions to learn French.

ecolesdete.campusfrance.org

Learn French Online

Erasmus+ EU Academy

Exchange students within the Erasmus+ programme can ask their the Sending institution about the possibility to access language course on the OLS platform.

Online tandems

You can also find a tandem online on the national Linguistic Tandem website or on My Language Exchange website.

www.tandem-linguistique.org

www.mylanguageexchange.com

Online exercises and podcasts

Relais website : relais.weebly.com

Lansad (youtube) lansad.unistra.fr

Savoir.rfi savoirs.rfi.fr/fr

Apprendre tv5monde

www.apprendre.tv5monde.com

Podcast francais facile

www.podcastfrancaisfacile.com

Bonjour de France

www.bonjourdefrance.com

Practice for the DELF, DALF et TCF exam

France Éducation International

www.france-education-international.fr

Smartphone apps

Duolingo

Memrise

Busuu

Drops

Events not to be missed 48 – 49

... at HEAR

International Mobility Days, November

During one week events around International mobility will happen in both the Mulhouse and Strasbourg Visual Arts Campus. Students and teachers having gone abroad during the Academic year will present their experience through oral presentations and an exhibition. As foreign students we will ask you to present your schools, cities and countries to the other students at HEAR. There will also be presentations on how to apply for artistic residencies abroad and how to organize artistic projects internationally.

Mulhouse Workshop Weeks Closing Events

Two evening events at the Mulhouse Visual Arts Campus with exhibitions and performances presenting the results of a week of workshops as well as the works of invited artists.

Hors limites

The *Hors limites* week changes the school's daily routine. The usual schedule is stopped and is replaced by workshops. The detailed program will be published on the school's website. In order to register, please contact the *Scolarité* (Academic Affairs office) of your campus.

Open school Day, February

During the open school day, you will be able to meet teachers and students who can tell you all about studying at HEAR and how to apply.

Weekend des diplômes/Diploma Show, last weekend of June

The Diploma Show allows you to discover the work of students that have graduated on the Master level at HEAR. During two days, an overview of the work – Art, Communication, Design, Music, Scenography is presented to the public on the Strasbourg Visual Arts campus and at the Académie supérieure de musique.

**and many more events and concerts
to be found here :**

www.agenda.hear.fr



... in Alsace

Journées du patrimoine/French Heritage Days
journeesdupatrimoine.culturecommunication.gouv.fr

Musica, September/October
www.festivalmusica.org

Ososphère, April/May
www.artefact.org/lososphere

Art3f Mulhouse International contemporary art fair, November
www.art3f.fr

St'art international art fair, November
www.st-art.fr

Regionale exhibition in Basel, Freiburg, Mulhouse and Strasbourg, November /January
www.regionale.org

Week-end de l'art contemporain — Plan Est
plandest.org

This 3rd week-end of March is dedicated to exhibitions, meetings, workshops, concerts, happenings, screenings, all over Alsace.

Central Vapeur, Illustration festival
March/April

Ateliers Ouverts, May
www.ateliersouverts.net

In May, all over Alsace, over 500 artists open their studios.

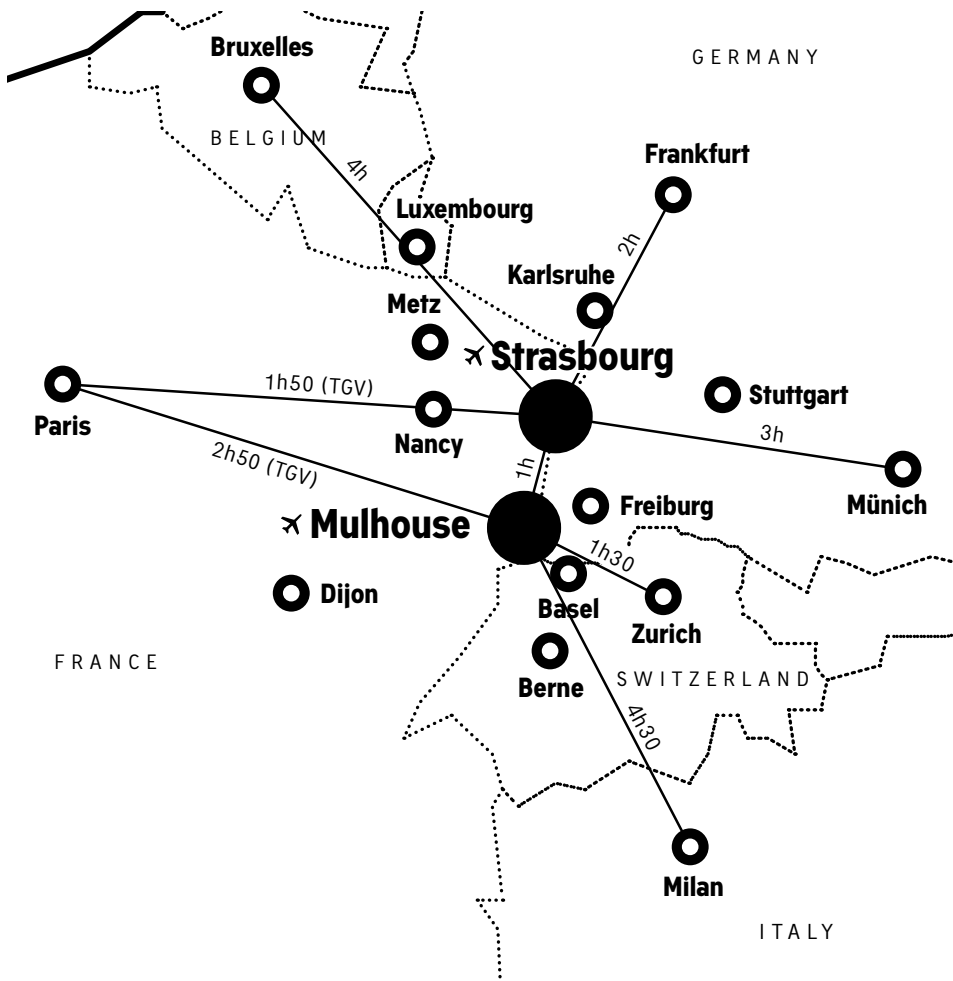
Nuit européenne des musées, May
nuitdesmusees.culture.gouv.fr

Artfifacts festival, June
www.artefact.org

Maps

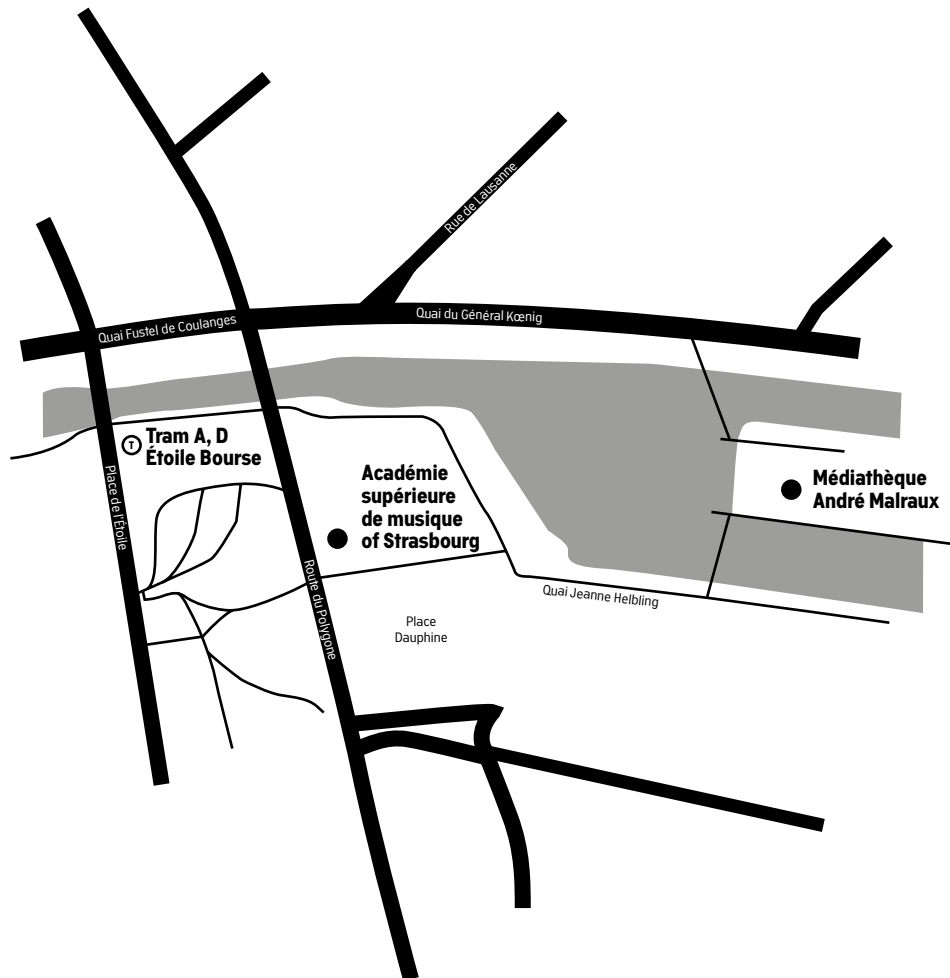
50 – 62

Where is HEAR?



Académie supérieure de musique of Strasbourg

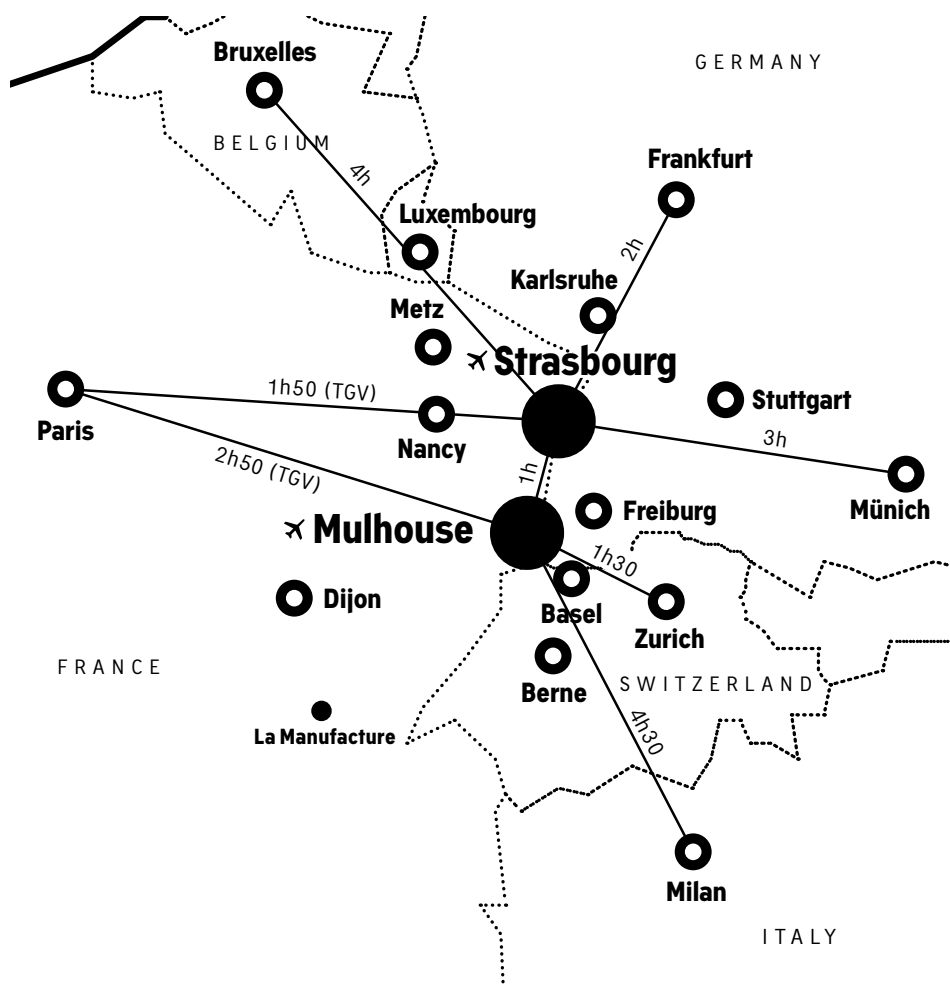
Haute école des arts du Rhin
Académie supérieure de Musique
1 place Dauphine



Mulhouse Visual Arts Campus

Haute école des arts du Rhin

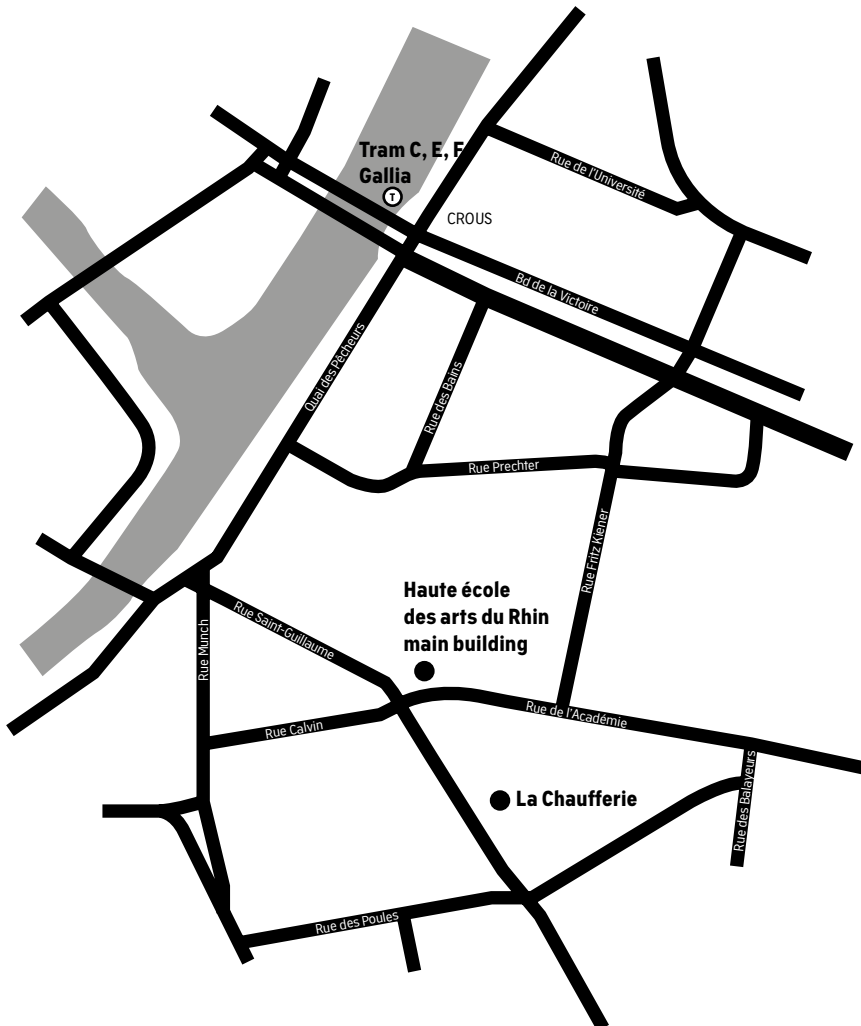
3 quai des Pêcheurs



Strasbourg

Visual Arts Campus

Haute école des arts du Rhin
1 rue de l'Académie, CS 10032



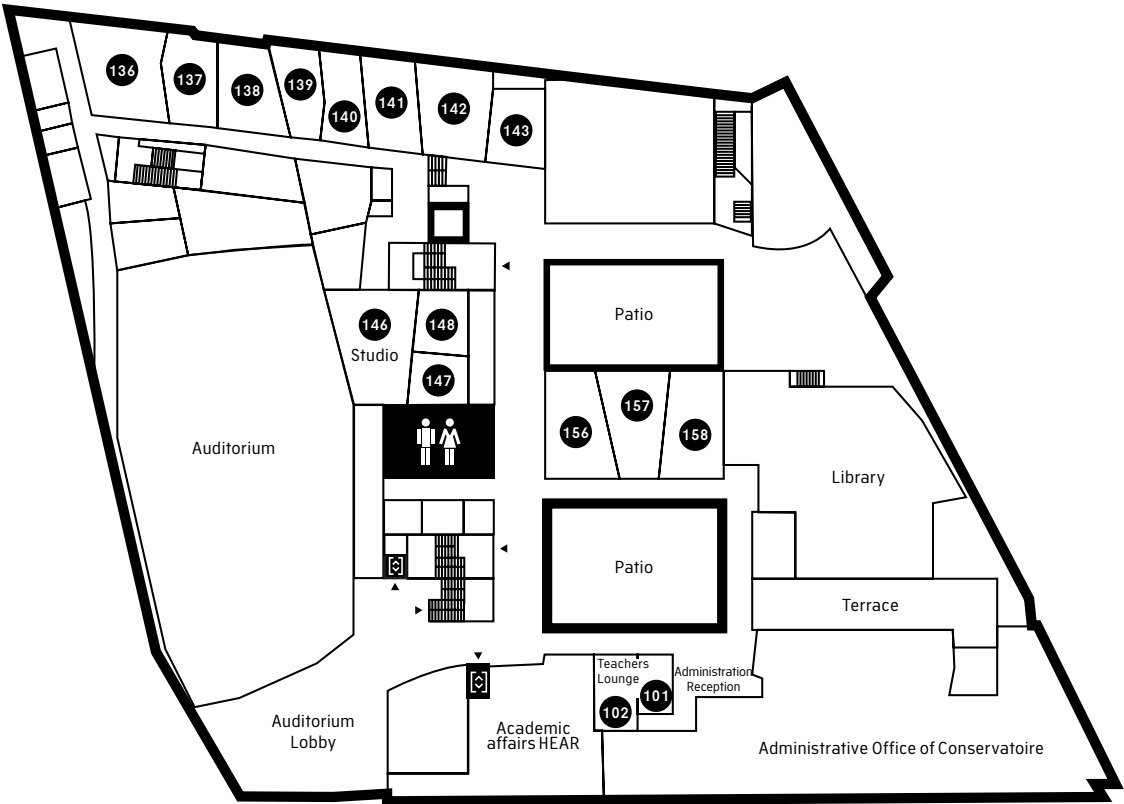
Strasbourg

Cité de la musique et de la danse

Groundfloor



First floor



Second floor

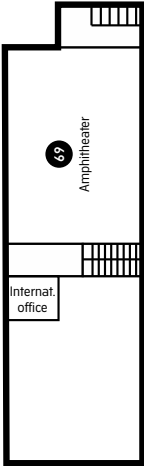


Third floor

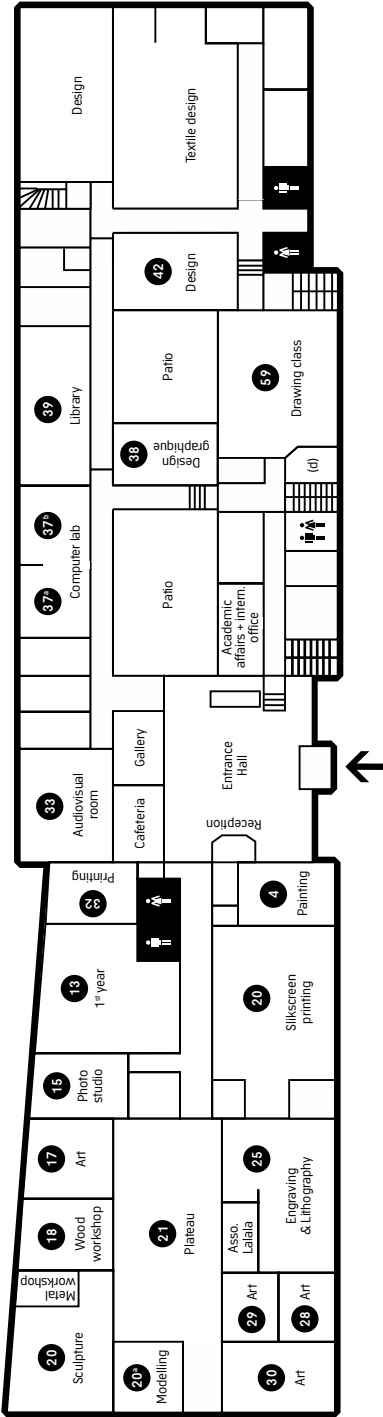


Mulhouse Visual Arts Campus

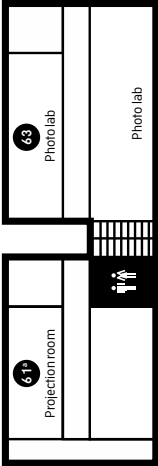
First floor



Ground floor

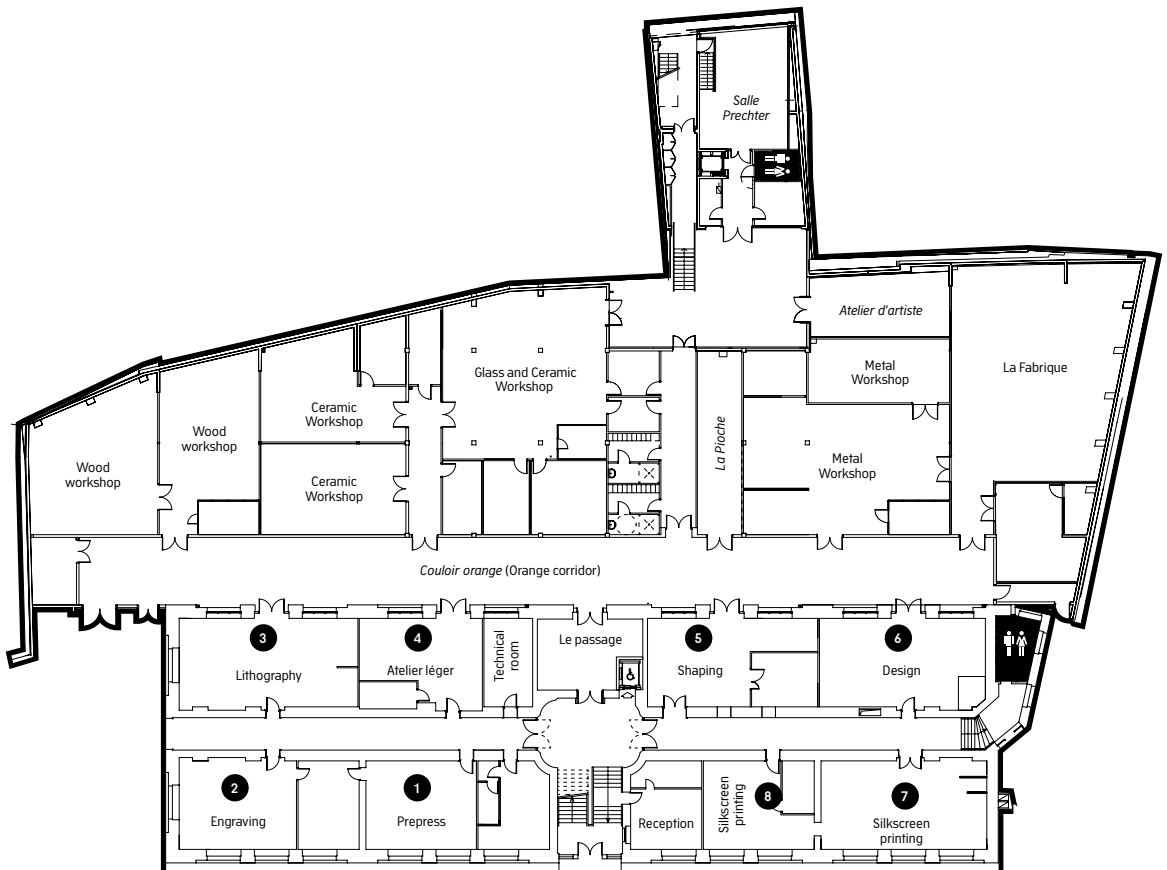


Basement

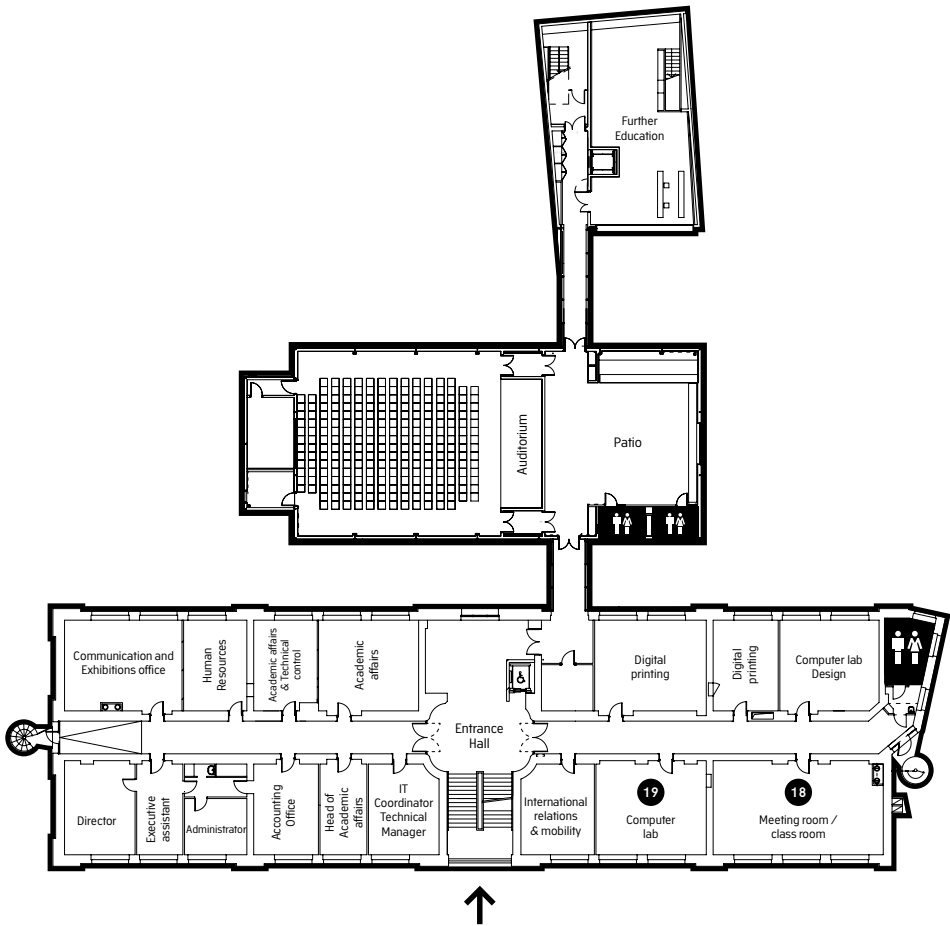


Strasbourg Visual Arts Campus – Main building

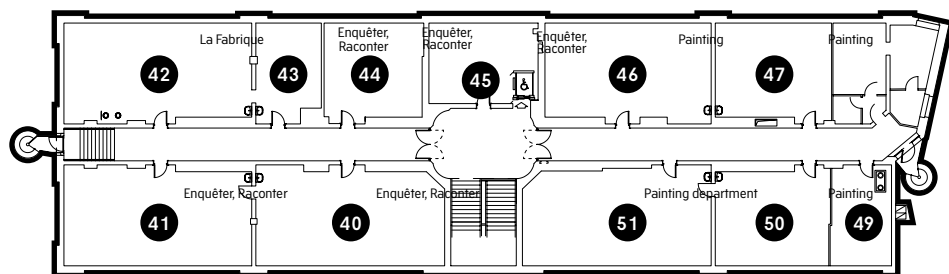
Workshop floor



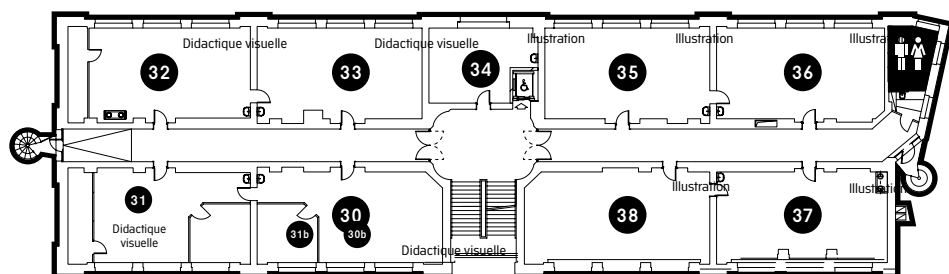
First floor



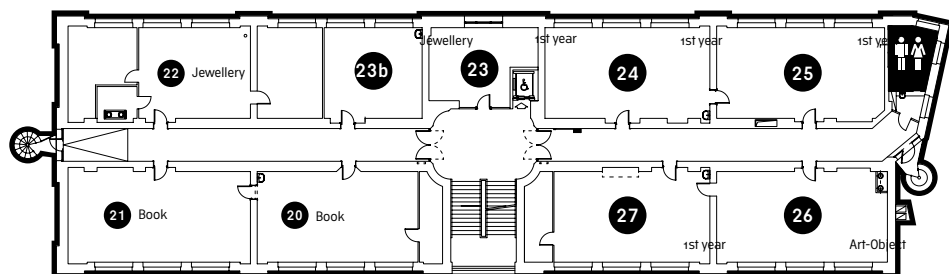
Fourth floor



Third floor

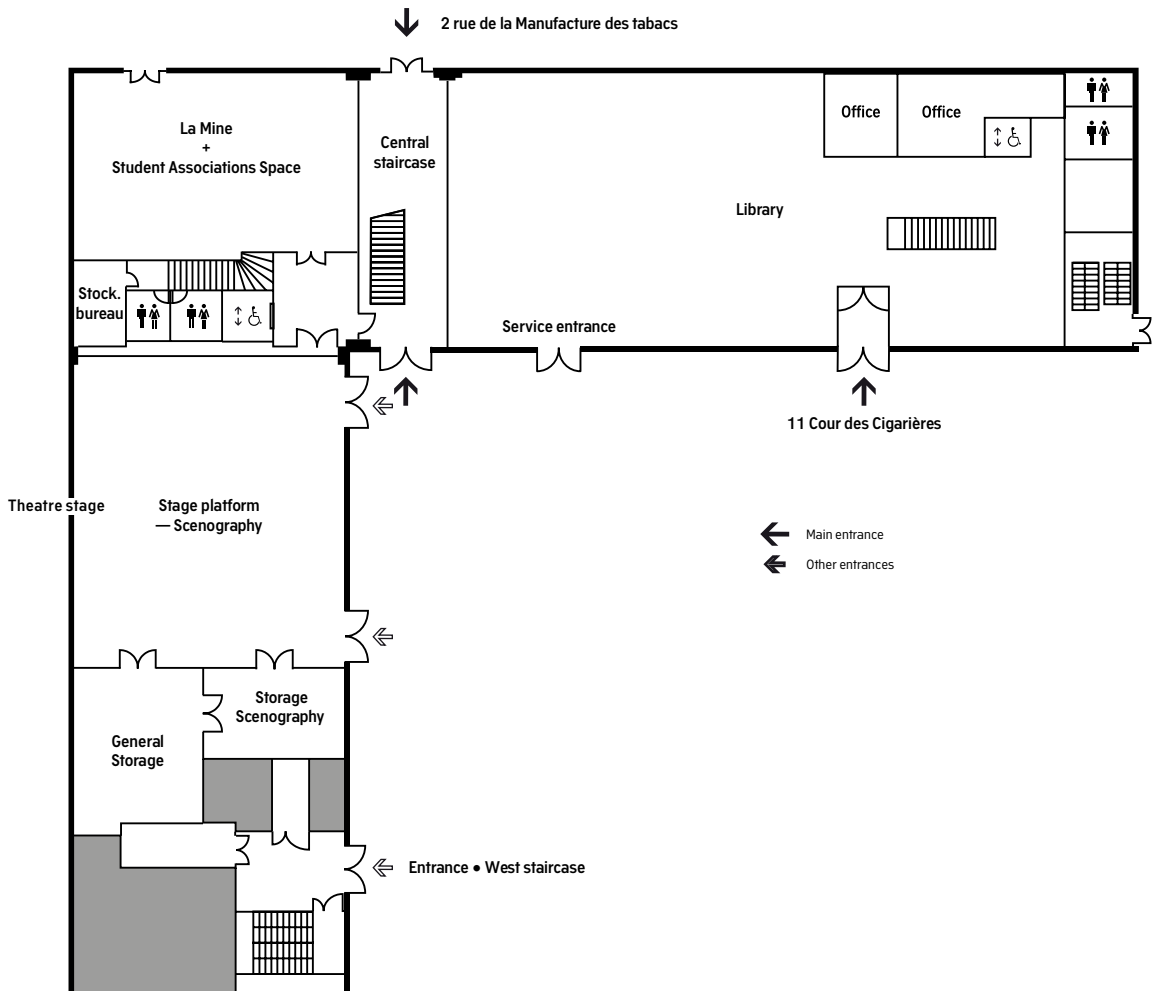


Second floor

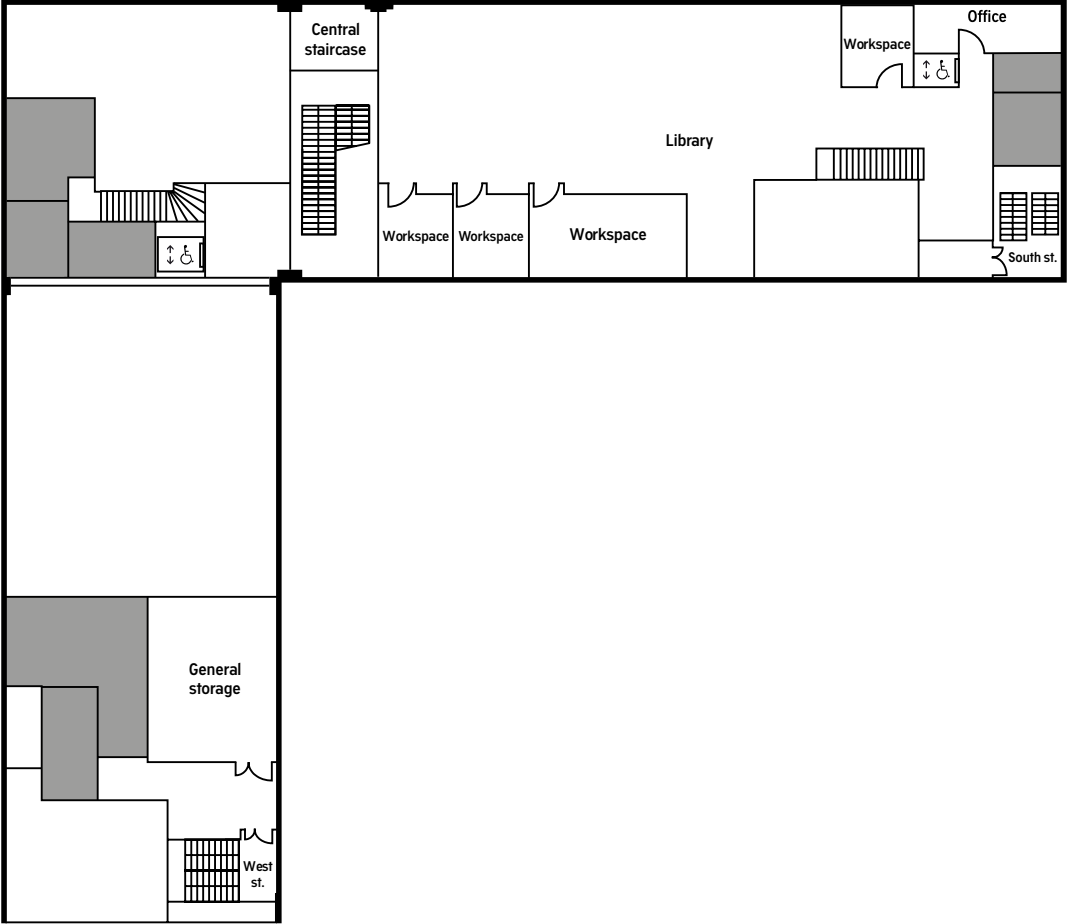


Strasbourg Visual Arts Campus – Manufacture des tabacs

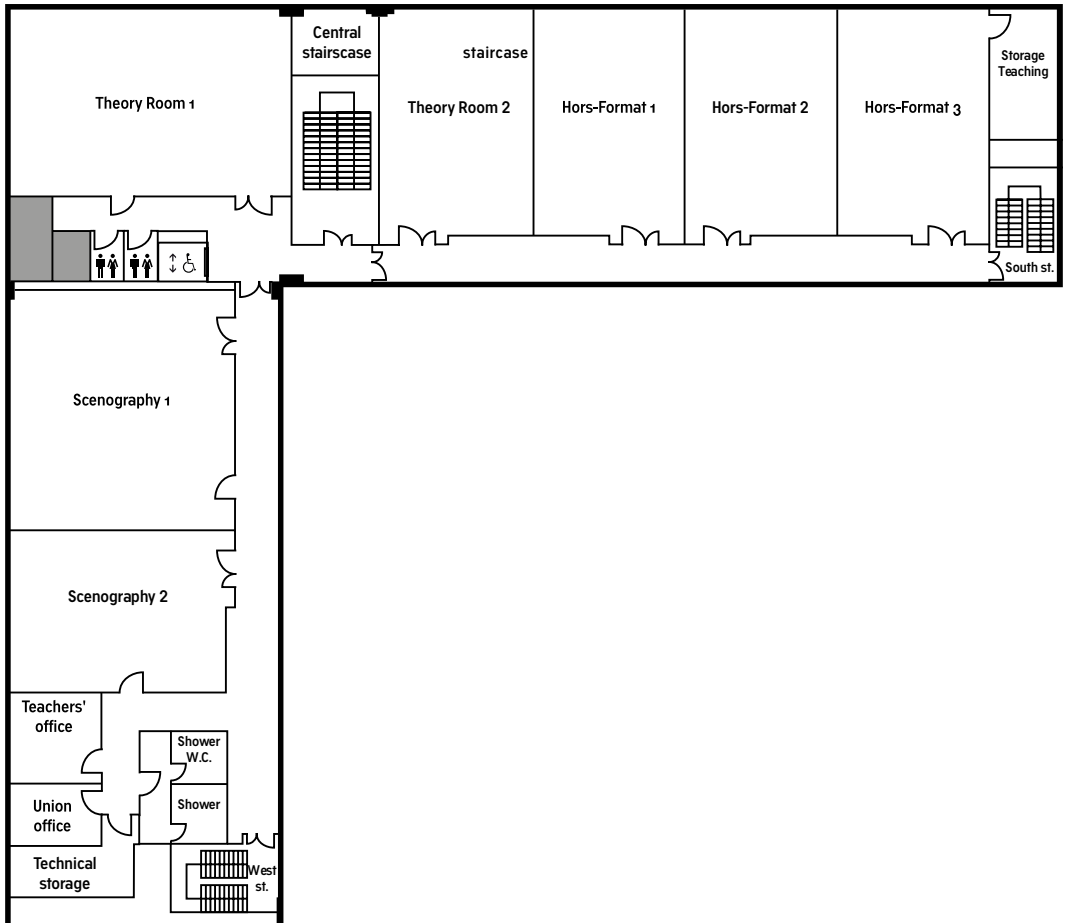
Ground floor • Bottom



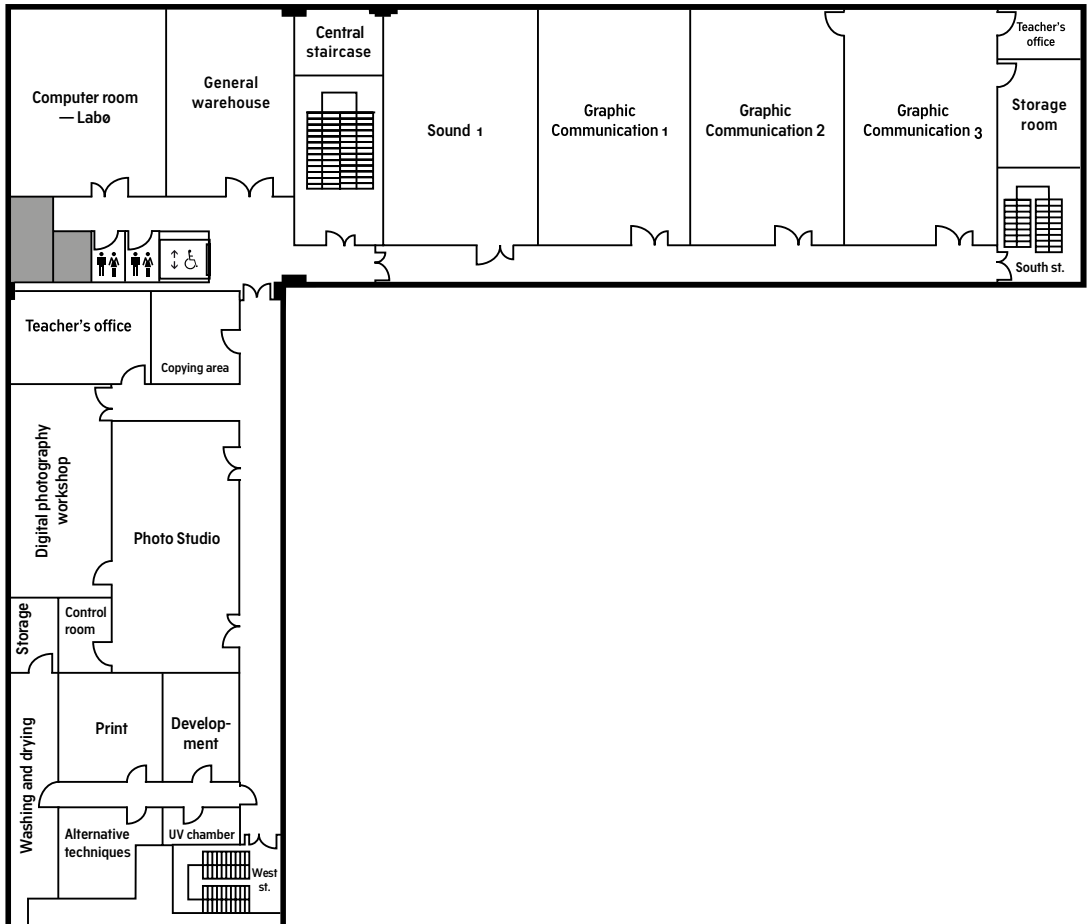
Ground floor • Top



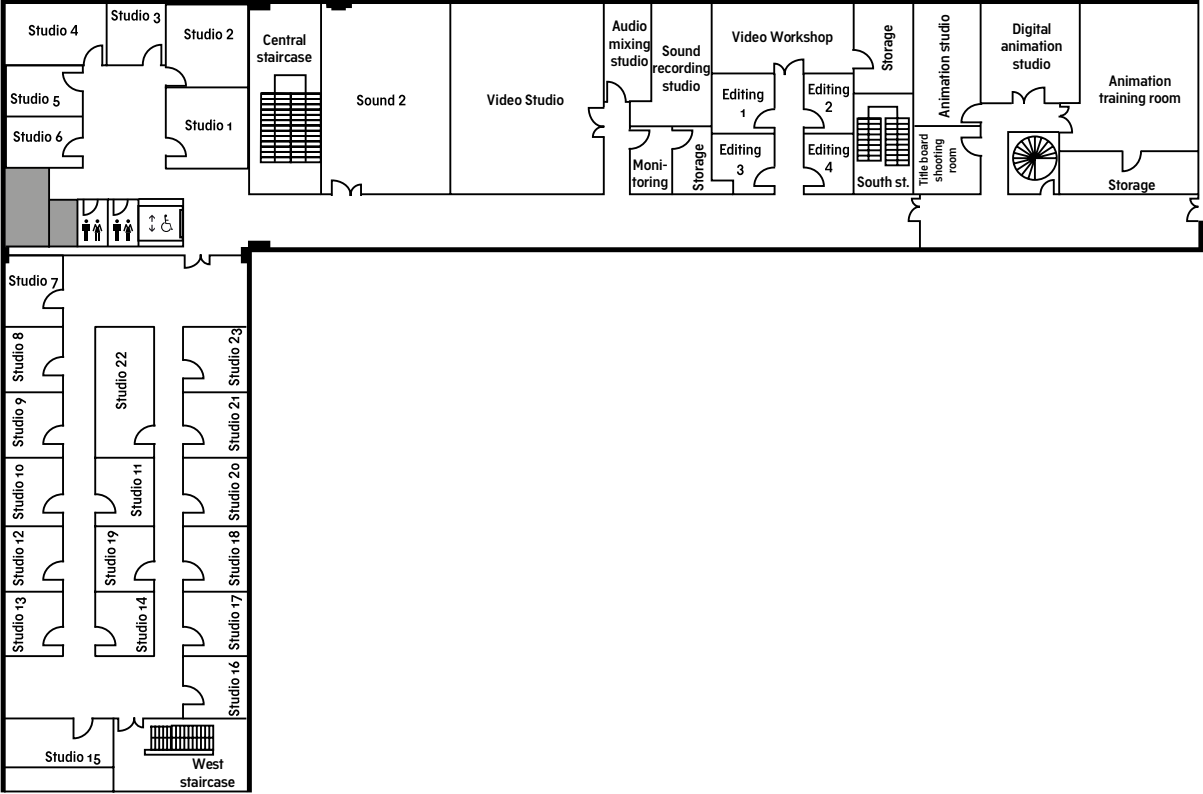
1st floor



2nd floor



3rd floor



Annex

67–73

Glossary

French	English
<i>1^{er} cycle // Licence // Phase programme</i>	Bachelor
<i>2^e cycle // Master // Phase projet</i>	Master
<i>DNA Art</i>	National Diploma in Art (awarding a Bachelor's Degree)s
<i>DNSEP Master</i>	National Higher Degree in Visual Expression (awarding a Master's degree)
<i>Atelier</i>	Specialisation
<i>Groupe pédagogique</i>	Workgroup
<i>Option</i>	Department
<i>Atelier technique</i>	Technical Workshop
<i>Bilan/Eval(uation)</i>	Final oral presentation
<i>Guide des études</i>	French Student Guide
<i>Site</i>	Campus : as in Mulhouse or Strasbourg Visual Arts Campus
<i>Stage</i>	Internship

Recording

Between 2 - 4 pieces / 15-20 minutes long

The recording is the main element on which your application will be estimated. As such, its quality is of paramount importance.

The repertoire is free of choice within the classical western repertoire but the program should include various styles.

The video should depict the candidate with his instrument (upper body for a flute/violin player, whole body for a pianist/harpist...).






Beside music itself, the teachers will also be evaluating your technique.

Editing is only allowed between performances (i.e. between pieces), and the recording must be no more than six months old.

Tips

Avoid recording with your phone.

CEFRL Self-Assessment grid

	A1 Basic User	A2 Basic User	B1 Independent user
Understanding	 Listening <p>I can understand familiar words and very basic phrases concerning myself, my family and immediate concrete surroundings when people speak slowly and clearly.</p>	<p>I can understand phrases and the highest frequency vocabulary related to areas of most immediate personal relevance (e.g. very basic personal and family information, shopping, local area, employment). I can catch the main point in short, clear, simple messages and announcements.</p>	<p>I can understand the main points of clear standard speech on familiar matters regularly encountered in work, school, leisure, etc. I can understand the main point of many radio or TV programmes on current affairs or topics of personal or professional interest when the delivery is relatively slow and clear.</p>
	 Reading <p>I can understand familiar names, words and very simple sentences, for example on notices and posters or in catalogues.</p>	<p>I can read very short, simple texts. I can find specific, predictable information in simple everyday material such as advertisements, prospectuses, menus and timetables and I can understand short simple personal letters.</p>	<p>I can deal with most situations likely to arise whilst travelling in an area where the language is spoken. I can enter unprepared into conversation on topics that are familiar, of personal interest or pertinent to everyday life (e.g. family, hobbies, work, travel and current events).</p>
Speaking	 Spoken interaction <p>I can interact in a simple way provided the other person is prepared to repeat or rephrase things at a slower rate of speech and help me formulate what I'm trying to say. I can ask and answer simple questions in areas of immediate need or on very familiar topics.</p>	<p>I can communicate in simple and routine tasks requiring a simple and direct exchange of information on familiar topics and activities. I can handle very short social exchanges, even though I can't usually understand enough to keep the conversation going myself.</p>	<p>I can deal with most situations likely to arise whilst travelling in an area where the language is spoken. I can enter unprepared into conversation on topics that are familiar, of personal interest or pertinent to everyday life (e.g. family, hobbies, work, travel and current events).</p>
	 Spoken production <p>I can use simple phrases and sentences to describe where I live and people I know.</p>	<p>I can use a series of phrases and sentences to describe in simple terms my family and other people, living conditions, my educational background and my present or most recent job.</p>	<p>I can connect phrases in a simple way in order to describe experiences and events, my dreams, hopes and ambitions. I can briefly give reasons and explanations for opinions and plans. I can narrate a story or relate the plot of a book or film and describe my reactions.</p>
Writing	 Writing <p>I can write a short, simple postcard, for example sending holiday greetings. I can fill in forms with personal details, for example entering my name, nationality and address on a hotel registration form.</p>	<p>I can write short, simple notes and messages. I can write a very simple personal letter, for example thanking someone for something.</p>	<p>I can write simple connected text on topics which are familiar or of personal interest. I can write personal letters describing experiences and impressions.</p>

B2 Independent User	C1 Proficient User	C2 Proficient User
<p>I can understand extended speech and lectures and follow even complex lines of argument provided the topic is reasonably familiar. I can understand most TV news and current affairs programmes. I can understand the majority of films in standard dialect.</p>	<p>I can understand extended speech even when it is not clearly structured and when relationships are only implied and not signalled explicitly. I can understand television programmes and films without too much effort.</p>	<p>I have no difficulty in understanding any kind of spoken language, whether live or broadcast, even when delivered at fast native speed, provided I have sometime to get familiar with the accent.</p>
<p>I can interact with a degree of fluency and spontaneity that makes regular interaction with native speakers quite possible. I can take an active part in discussion in familiar contexts, accounting for and sustaining my views.</p>	<p>I can express myself fluently and spontaneously without much obvious searching for expressions. I can use language flexibly and effectively for social and professional purposes. I can formulate ideas and opinions with precision and relate my contribution</p>	<p>I can read with ease virtually all forms of the written language, including abstract, structurally or linguistically complex texts such as manuals, specialised articles and literary works.</p>
<p>I can interact with a degree of fluency and spontaneity that makes regular interaction with native speakers quite possible. I can take an active part in discussion in familiar contexts, accounting for and sustaining my views.</p>	<p>I can express myself fluently and spontaneously without much obvious searching for expressions. I can use language flexibly and effectively for social and professional purposes. I can formulate ideas and opinions with precision and relate my contribution skilfully to those of other speakers.</p>	<p>I can take part effortlessly in any conversation or discussion and have a good familiarity with idiomatic expressions and colloquialisms. I can express myself fluently and convey finer shades of meaning precisely. If I do have a problem I can backtrack and restructure around the difficulty so smoothly that other people are hardly aware of it.</p>
<p>I can present clear, detailed descriptions on a wide range of subjects related to my field of interest. I can explain a viewpoint on a topical issue giving the advantages and disadvantages of various options.</p>	<p>I can present clear, detailed descriptions of complex subjects integrating sub-themes, developing particular points and rounding off with an appropriate conclusion.</p>	<p>I can present a clear, smoothly-flowing description or argument in a style appropriate to the context and with an effective logical structure which helps the recipient to notice and remember significant points.</p>
<p>I can write clear, detailed text on a wide range of subjects related to my interests. I can write an essay or report, passing on information or giving reasons in support of or against a particular point of view. I can write letters highlighting the personal significance of events and experiences.</p>	<p>I can express myself in clear, well-structured text, expressing points of view at some length. I can write about complex subjects in a letter, an essay or a report, underlining what I consider to be the salient issues. I can select a style appropriate to the reader in mind.</p>	<p>I can write clear, smoothly-flowing text in an appropriate style. I can write complex letters, reports or articles which present a case with an effective logical structure which helps the recipient to notice and remember significant points. I can write summaries and reviews of professional or literary works.</p>

Artistic statement

A portfolio usually starts with an artistic statement.
Please find below some advice we give to our outgoing students.

Method

Maximum 100–300 words

Brainstorm

On a piece of scrap paper; make a list of 20 keywords related to your work. To help, you can use the questions below.

Questions that can help you to write your statement

Please don't literally 'answer' these questions; they are just here to help you think about your work
Why do I make art?

How do I make art? (Mediums, process, describe techniques if they are special, unusual materials etc.)
What does it mean to do art for you?

Where and how is my work presented?
Exhibitions? Internet?

Where does it originate? What are my influences?
Where am I situated in what is going on in the world today/in art today? In the past? In the future? What do I want to change?

Why did I choose the medium/materials I use?
Why this size? Why am I making it?

What artists do I like/hate and why?

How should my work ideally be shown?

What am I doing right now? What came right before? Right after? What's next?

What do I want to share with the world?

Outline

Select and regroup the words or themes that go together

Draft

Start writing following the structure you have created

Edit

On a Microsoft Word document (you can install Microsoft Word for free with the school), select the language you are writing in and start writing your final draft. Leave your statement aside for a week or two and come back to see what you should leave or remove. Then find someone who does not know your work and have them tell you if what you have written makes sense. At last, find someone who knows your work and see if they feel you haven't missed something.

Proofread

Don't skip proofreading! Find a classmate who speaks a good enough English to help you correct your mistakes.

Tips

Be concise: explain what you are trying to do in your work, why, and what makes you interested in doing it. If the process is important, describe it.

Long and short sentences create a syncopated rhythm that is enjoyable to read.

The Words Should Match the Work: is your work whimsical? Or is it violent? What is the scale?

Make sure your prose reflects the qualities of what it describes. Using verbs and adjectives that really match the qualities of your creative output will

create a statement that both excites and informs.

Remember: the artist statement is speaking to the viewer in the artist's absence. Therefore, the artist statement should be short, concise and well written in a conversational language (we should not need a dictionary to understand every word).

Letter of motivation skeleton

With hope that it might help you for your application at HEAR, please find below an example of Letter of motivation skeleton. You will find more advice in our 'Guide de mobilité internationale'

STUDENT NAME

address + phone + website...

Date (month, day, year)

To whom it may concern

**It is a pleasure for me to apply for
(name of specific study department at HEAR) as an exchange student.**

[Start by describing your work in 4 sentences maximum]

.....
.....
.....
.....

[Then explain why you choose to apply in this specific study department]

.....
.....
.....
.....

[Finish your letter with more details on the skills you would like to develop during your studies at HEAR]

.....
.....
.....
.....

**Thank you in advance for your consideration.
Do not hesitate to contact me for any questions**

**Yours Sincerely,
STUDENT NAME**

Useful weblinks

HEAR

- official website www.hear.fr
- HEAR Agenda www.agenda.hear.fr
- official facebook page  [HEAR.fr](https://www.facebook.com/HEAR.fr)
- Student association Lalala (Mulhouse) Facebook page  [Association – LALALA-Ecole-supérieure-d'Art-Le-Quai-Mulhouse](https://www.facebook.com/Association-LALALA-Ecole-sup%C3%A9rieure-d%27Art-Le-Quai-Mulhouse)
- Student association La Mine (Strasbourg)
Instagram: [@la_mine_strasbourg](https://www.instagram.com/la_mine_strasbourg)
- Students facebook group (Strasbourg)
 [groups/17900809592](https://www.facebook.com/groups/17900809592)
- Students facebook group (Mulhouse)
 [groups/27894113420](https://www.facebook.com/groups/27894113420)
- Students facebook group (Académie)
 [groups/671270896253003](https://www.facebook.com/groups/671270896253003)
- HEAR Alumni facebook group
 [groups/760221894082024](https://www.facebook.com/groups/760221894082024)

Student life

- Carte Culture www.carte-culture.org
- Sport Unistra www.unistra.fr/fr/campus/faire-du-sport
- Étudiants Strasbourg
www.etudiants.strasbourg.eu
- Jeunes Ambassadeurs d'Alsace
www.ambassadeurs.alsace/devenir-jeune-ambassadeurs

Tourist information

- Alsace www.tourisme-alsace.com
- Mulhouse www.tourisme-mulhouse.com
- Strasbourg www.visitstrasbourg.fr
- EuroCity Strasbourg www.en.strasbourg.eu

Public transport

- Mulhouse – Solea www.solea.info
- Strasbourg – CTS www.cts-strasbourg.eu

Bicycle

- Mulhouse — Velocité www.velocite.mulhouse.fr
- Strasbourg — Velhop www.velhop.strasbourg.eu

Train

- National — Oui SNCF
www.oui.sncf
- Regional – Ter SNCF www.ter.sncf.com
- German group ticket – DB www.bahn.de

Bus

- Eurolines www.eurolines.fr (Europe)
- Flixbus www.flixbus.fr (Europe)
- Ouibus www.fr.ouibus.com

HousingStudent offer:

- Adele www.adele.org
- Amitel www.amitel.eu
- Crous-Strasbourg www.crous-strasbourg.fr
- Le Club Etudiant www.leclubetudiant.com
- Lokaviz www.lokaviz.fr
- MGEL logement www.mgellogement.fr
- Relais Étudiant/logement
www.relais-etudiants.com

Flatshare:

- Appartager www.appartager.com
- Colocation www.colocation.fr
- Coloctoit www.coloctoit.com
- La Carte des Coloc-Strasbourg
www.lacartedescolocs.fr
- La Carte des Coloc-Mulhouse
www.lacartedescolocs.fr
- Recherche Colocation
www.recherche-colocation.com

General offer:

- Immo Region www.immoregion.fr
- Le bon coin www.leboncoin.fr
- Top Annonces www.topannonces.fr

Phone

- Tous les forfaits www.touslesforfaits.fr
- Le bon forfait www.lebonforfait.fr

Legal information

- Public Service www.service-public.fr
- Entry Informations www.diplomatie.gouv.fr
- Préfecture — Strasbourg
www.bas-rhin.pref.gouv.fr
- Préfecture — Mulhouse www.haut-rhin.gouv.fr
- CAF www.caf.fr
- OFII www.ofii.fr

French Class

- Pôle LANSAD—Strasbourg lansad.unistra.fr
- Pôle FORCE—Mulhouse learning-center.uha.fr
- ESN - Strasbourg strasbourg.esnfrance.org
- Université Populaire strasbourg.upe-alsace.fr
- Campus France ecolesdete.campusfrance.org

Shopping

- Le bon coin www.leboncoin.fr
- Mulhouse food market agenda
www.mulhouse.fr
- Strasbourg food market agenda
www.strasbourg.eu/marches-brocantes

Still have questions, don't hesitate to pass by our office.
Here are the opening days and hours:

**Académie Supérieure de
Musique**

Visiting days and hours

Iván Solano Ariza

/ Perrine Maxant-Leplay:

Monday from 9 am to noon and
from 2 pm to 5 pm

Wednesday from 9 am to noon.

Mulhouse Visual Arts Campus

Visiting days and hours

Sarah Gauthier:

Monday from 9 am to noon and
from 2 pm to 5 pm

Wednesday from 9 am to noon.

Strasbourg Visual Arts Campus

Visiting days and hours

Academic affairs and

International mobility office:

Monday to Friday from 2 pm
to 5:30 pm.

Or send us an email: ✉ international@hear.fr or/and ✉ sarah.gauthier@hear.fr

Responsable de la publication

Stéphane Sauzedde

Version numérique

Janvier 2026

Réalisation

Anais Menrath

Caractère

Police Academy Sans Regular et Bold

Coordination

Laurent Doucelance

Mise en pages

Marc Senny Palany

La Haute école des arts du Rhin est un établissement public de coopération culturelle, sous tutelle pédagogique du ministère de la Culture. Ses membres fondateurs et ses principaux contributeurs sont : la ville et l'Eurométropole de Strasbourg, la ville de Mulhouse, l'État – ministère de la Culture et DRAC. Elle reçoit le soutien de la région Grand Est.

